

LIVING FUTURE
INSTITUTESM
AUSTRALIA

2021

ANNUAL REPORT





The Living Future Institute of Australia acknowledges the Traditional Custodians of the country throughout Australia on which we live, learn, and work, and recognise their continuing connection to land, waters, and culture.

We pay our respects to them and to their Elders past, present and emerging.



TOM GROSSKOPF

CHAIR OF THE BOARD

A year ago I wrote to you about an economy at a tipping point, a society fracturing along cultural and wealth fault lines and a physical environment trying to heal after a series of extreme weather events including a truly horrendous summer of wildfires. I stated my belief that our community and industry is ready for the next step in the challenge to create a living future. This year I report that the evidence of a turning tide is strong and optimism should inspire us all to act at whatever scale we are able.

I am neither ignorant nor dismissive of the challenges of the global transition to a socially just, culturally rich and ecologically regenerative future. Humanitarian tragedies like the use of starvation as a weapon of war in Ethiopia and environmental disasters like the deforestation of the Amazon in Brazil are an outrage. Locally we witness the ongoing and systemic disadvantage of Aboriginal and Torres Strait Islander people, new investment in high carbon emission industries and the confirmation of 13 species as extinct bringing our record of mammal extinctions since 1788 to 32 or 10% of all mammals, an ignominious world record.

I will not dwell on the negative because I do believe the turning of the tide to a positive future is now unstoppable. The financial year 2020-21 was a year filled with success stories and it is an honour to report on some of them here. This report is full of stories of people and companies who are striving to either meet or support the Living Building Challenge. They are individually inspirational and collectively transformational. Their commitment has emboldened the LFIA to publicly commit to achieving 75 projects registered for any level of certification from Zero Carbon to Full Living Building Certification within 5 years; a more than threefold increase in our achievement to date.

It is always dangerous to pick out highlights in such a short message but I must acknowledge the recognition of Haris Moratis as a Living Future Hero by the ILFI at Living Future 2021 in the US. The moniker of Living Future Hero is a fitting epitaph for a man who dedicated his professional life to the transformation of our civilisation through sustainable and restorative building. I miss his wisdom and wit at the Board table.

Our ambitions were again frustrated by the COVID-19 pandemic. It has had a significant negative impact on the income derived during the financial year, a deficit of some 30% on last year. The silver lining to this ominous cloud has been the development of resilience we would in no other circumstance have built. I thank our very capable CEO Laura Hamilton-O'Hara and her team, Alegria Alano and Nicola Smith for their prudent management of the business.

As forecast, the LFIA has made step changes to meet the challenge of a Living Future. We have adjusted our operating model to one of a social enterprise and the launch of our advisory services business is one initiative in this transformation. Directors have had to pivot from strategists to operational contributors to meet the challenges encountered through the year. To a person we have seen contributions and an alignment to mission that makes us truly unstoppable. My thanks to all of the Directors.

To every sponsor, every person committed to the Living Building Challenge, every business with a Declare label, every collaborative, every ambassador and every member, I acknowledge and thank you for your ambition, courage and conviction. You are all part of the change you wish to see. Scale doesn't matter, momentum does.



LAURA HAMILTON-O'HARA

CHIEF EXECUTIVE OFFICER

The day before we locked down in March 2020, we had a board meeting at Barangaroo. I remember one of our board members saying to me on that Thursday morning, COVID would be tough and talked about every single day for many months - be prepared.

At the time, I thought this was highly unlikely. This would pass, it always does. I look back on that moment now, 19 months later, glad that I had no idea the extent that this would transform all of our lives.

Without question, this has been the most challenging few years of my career so far. I feel the weight of holding things together, while still making progress on our critical vision and role. There were moments when tough choices were needed, and I am proud that the decisions we made all along prioritised people, wellbeing, and our collective mission.

I know that what we have learnt over the last decade as an organisation is crucial for Australia in the decade ahead. With that clearly in focus, LFIA carried out our five-year strategic planning process this year. It's the first one we have done with a timeline this long. The result, a goal of 75 registered projects by December 2026, is a clear, focused, and an ambitious way forward. This is exactly the time to play bold.

In meeting the challenges of this year, I am so grateful that I was not walking alone.

Firstly, to the staff, Nicola Smith and Alegria Alano, what courageous and capable women you are. Thank you for your dedication, ingenuity, and sense of fun. I look at what we have managed to achieve together in the most constrained of times and it fills me with hope for our future.

Stephen Choi remains a connected part of the team through the Living Future Accreditation delivery, Biophilic Design Initiative and consulting work. Stephen, you have been an absolute rock, thank you for your candour, determination, and wisdom. Possibly though, the most powerful gift of all has been your friendship.

Tom, you are the calmest person I know. The ideal Chair for turbulent times. Thank you for your guidance and generosity in sharing your experience, while also giving me room to make my own choices. This gratitude extends to the whole LFIA Board. I am continually inspired by your integrity, sense of purpose and the fact that such a talented group of humans, chooses to spend their precious spare time guiding this organisation.

Our Strategic Partners: Frasers, GH Commercial, ADP, Bluescope, Junglefy and NH Architecture, you have been exceptional. Not only do you support us in our mission, but you are doing incredible things in your own right. Congratulations and thank you. I look forward to building a living future together for many years to come.

Through our work this year with the Technical Working Group, Biophilic Design Initiative and Living Future Accreditation + Regional Intensive, I have witnessed the growing level of knowledge and ambition in our region.

This story is evident in the numbers too. In the last 12 months, membership has grown by 35%, Declare labels by 46% and in 2021, Australia had more project registrations than ever before. Thank you to the entire LFIA community for working hard to make this happen.

Traveller, there is no path. The path is made by walking. - Antonio Machado



INTERNATIONAL
LIVING FUTURE
INSTITUTESM

LFIA is an Affiliate of the International Living Future Institute (ILFI). Their camaraderie, advice, inspiration and support makes all things possible and we are so grateful. We are proud to connect the Australian built environment industry with ILFI programs and our shared mission:

A FUTURE THAT
IS SOCIALLY JUST,
CULTURALLY RICH AND
ECOLOGICALLY
RESTORATIVE

STRATEGIC PARTNERS

The Living Future Institute of Australia partnered with the following organisations in 2021 and is delighted to have their support in working towards a living future.



"It's tempting to name our achievement of Living Building Challenge® Petal Certification at Burwood Brickworks in Melbourne as our proudest moment of the year. As the culmination of many years' work by many people, to successfully deliver the world's most sustainable shopping centre and the first ever retail development to achieve Petal Certification, it certainly galvanised our business in celebration. However, as part of the Living Building Challenge® journey, we committed to sharing the lessons we learned and knowledge we gained through the process. Therefore, our launch of the Greensheet to the wider industry and the public is something which Frasers Property Australia is most proud, given the ongoing contribution this resource will have for Living Building Challenge® projects in the future, and the regenerative buildings movement overall."

Nicholle Sparkes

General Manager Delivery & Operations, Frasers Property Australia





Through the Living Future Institute of Australia's verifications standards, a range of our products hold current and relevant certifications that illustrate our commitment to transparency, healthy indoor environments and meeting the criteria of leading green building standards. In 2021 we are proud to achieve the Declare Red List Free certification on all our 100% wool carpet tiles, 100% wool broadloom carpet and our 80/20 wool blend broadloom carpets, helping us to achieve healthier flooring for communities and be able give back to the environment.

GH Commercial Team



IMAGE: COURTESY GH COMMERCIAL



In 2021, ADP Consulting became a signatory of the WorldGBC's Net Zero Carbon Buildings Commitment. I believe as engineers, we can significantly support and influence the industry in creating, better more sustainable environments for our communities. It's important to us to use our position to encourage our clients, partners and suppliers to follow suit and advocate for net zero operational and embodied carbon built environments so we can make a real impact on reversing climate change.

Laurent Deleu

Founding Director, ADP Consulting



It has been a big year for BlueScope. We appointed a Chief Executive of Climate Change, set a goal of net zero GHG emissions across our operations by 2050 and have announced projects to help us explore low emissions steel-making at our Port Kembla Steelworks in NSW, including an MOU with Rio Tinto. It is an exciting time for the steel industry, and for BlueScope as we pursue our decarbonisation pathway.

Philippa Stone

Sustainability Manager, Bluescope



We are so proud of our Green Roof and Solar PV research collaboration with Lendlease, the City of Sydney and UTS, proving that solar panels are not only great, but when combined with a green roof, their true potential is realised, unlocking a potent combination of biodiversity and energy efficiency.

We believe this research will boost the uptake of more nature-based solutions and put us on the pathway to climate restoration and resilience.

Suzie Barnett

General Manager, Jungliefy



The completion of Burwood Brickworks as the first LBC accredited retail development in the world has been a major success story for NH Architecture. Seeing the interest and momentum it has generated in our industry, client and collaborator base has exceeded our expectations.

Following the great success and learnings it also had significant impact on our own operations. NH has set new environmental standards for the company including setting a pathway to be a carbon neutral certified studio, tracking carbon footprints of live projects, exclusion of 'Red List' materials in our projects and an internal education program that ingrains the evolution of our environmental design thinking in daily practice.

We are particularly proud having played a part in contributing to Frasers publicly released 'Greensheet' as an outcome from the Burwood Brickworks project.

Martin Heide

Principal, NH Architecture

LIVING FUTURE PROGRAMS

Living buildings give more than they take, creating a positive impact on the human and natural systems that interact with them. Projects that achieve Living Building Challenge®, Zero Energy and Zero Carbon certifications prove that future-focused buildings aren't a dream. They're here.

THERE ARE **163 BUILDINGS** AROUND THE WORLD WITH A LIVING FUTURE CERTIFICATION AND **784 PROJECTS** REGISTERED GLOBALLY.



AUSTRALIAN PROJECTS REGISTERED IN 2021, INCLUDING THE **LARGEST PROJECT TO DATE** AS WELL AS OUR FIRST ZERO CARBON PROJECT



TOTAL REGISTERED PROJECTS IN **AUSTRALIA**

PROJECTS IN AUSTRALIA

THE WORLD'S FIRST LIVING SHOPPING CENTRE



IMAGE CREDIT: COURTESY FRASERS PROPERTY AUSTRALIA

BURWOOD BRICKWORKS SHOPPING CENTRE

WURUNDJERI COUNTRY, BURWOOD, VIC

Five years ago, Frasers Property Australia declared it would try to create the world's first shopping centre to achieve Living Building Challenge® certification.

This year, Fraser's Property Australia and Burwood Brickworks got one step closer by formally achieving Living Building Challenge® Petal Certification – the first retail centre in the world to do so.

The Petals independently audited and now achieved by Frasers Property for this Certification refer mainly to the built form of Burwood Brickworks – namely the Place, Materials, Health & Happiness, and Beauty Petals.

The remaining three Petals – Water, Energy, and Equity – relate to the centre's operation (which have obviously been impacted by COVID-19 trading restrictions and lockdowns), and these

Petals must also be independently audited, based on 12 months of real data, for the centre to achieve full LBC® Certification.

Frasers Property Australia achieved another first with Burwood Brickworks in 2021 with the release of 'The Greensheet'.

The Greensheet is the first publicly available list of materials for an entire development project. It is a culmination of 20,000 hours of work and is sure to be a valuable resource for the industry.

**2021 VICTORIAN
ARCHITECTURE AWARDS**
Winner - Sustainable
Architecture

NEW PROJECTS IN PROGRESS



IMAGE: GRAPHICAL THREAD

GLENROY COMMUNITY HUB

Location: Wurundjeri Country, Glenroy, VIC

Owner: Moreland City Council

Typology: Community

Site Area: 4,432m²

Certification Ambition: Petal

The Hub will provide the City of Moreland community with a welcoming, nature-inspired environment to learn, grow, celebrate and heal. Its centrepiece is the new contemporary library, with Glenroy Memorial Kindergarten, Maternal Child Health, a community health provider, neighbourhood learning and childcare collocated with the library. Framing the hub as a 'social connector' is a key strategy to increase community awareness of the range of Council services and interaction.

Construction is in progress with the Hub expected to open early 2022.



IMAGE: HAMES SHARLEY

SCOTCH COLLEGE WELLBEING & SPORTS CENTRE

Location: Kurna Country, Torrens Park SA

Owner: Scotch College

Typology: Educational

Site Area: approx 7,000m²

Certification Ambition: Core

In conjunction with Scotch College, Hames Sharley developed a powerful vision for the Centre – this isn't simply a building but a place that will make a real connection between students, families, and the broader community on a platform of wellbeing.

Construction began in early 2021 with estimated completion in mid-2022. Scotch College Wellbeing and Sports Centre aims to be the first school in Australia to complete LBC Certification at any level.

TECHNICAL ADVISORY SERVICES

In the pursuit of the rapid transformation of our built environment through regenerative design, the LFIA expanded its business operations to include Technical Advisory Services.

The new offering is an addition to the events, training and advocacy work that supports the International Living Future Institute programs in Australia, such as the Living Building Challenge™ (LBC).

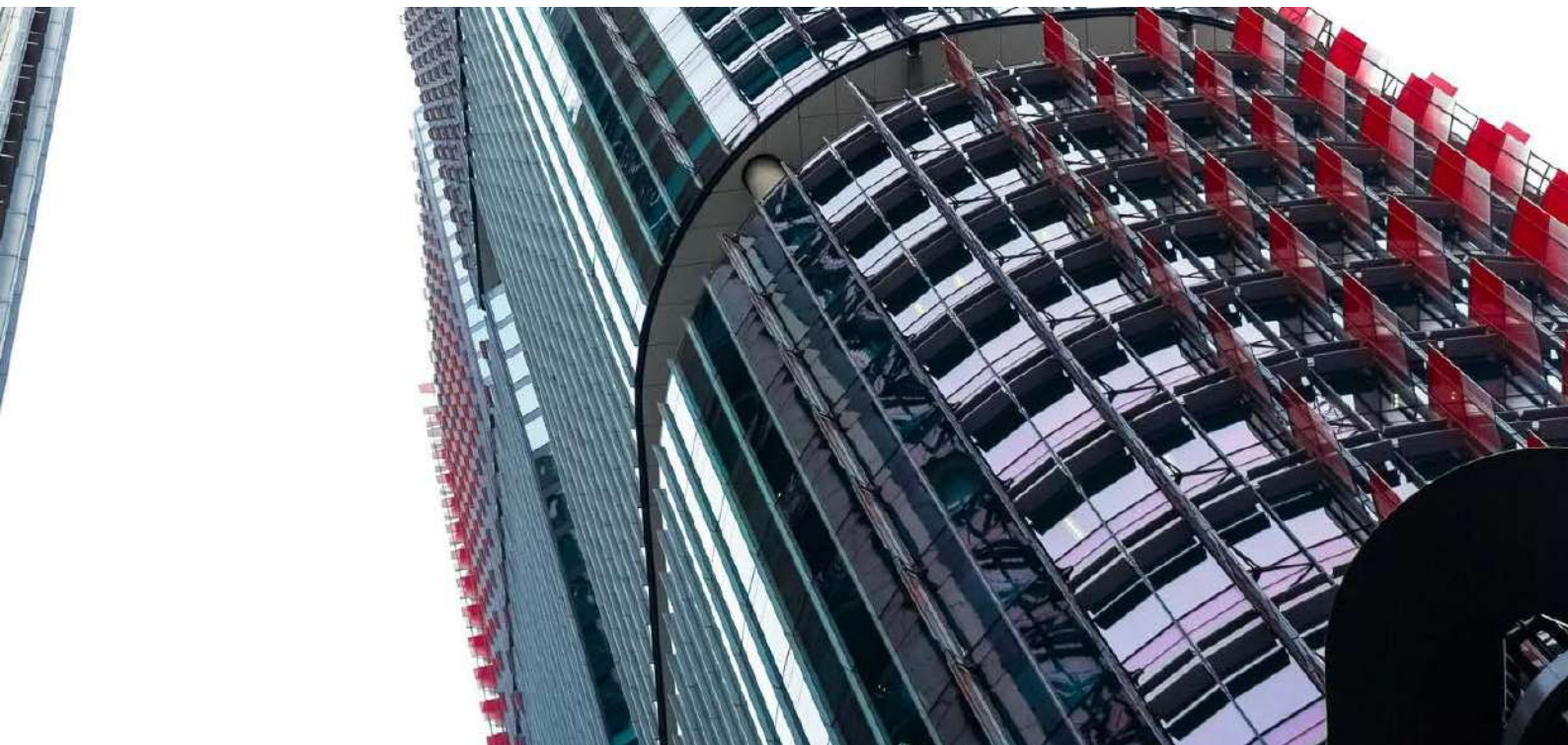
To reach our ambitious target of 75 registered projects in Australia in the next five years, we feel that the gap between inspired ideas and real projects needs to continue to close.

Advice, that is founded in a deep understanding of regenerative design and a collaborative approach, can achieve this.

Providing Technical Advisory Services allows LFIA to grow in influence and impact in a way that stays true to our values of openness, transparency and collaboration. Our focus is to be an integrator, providing projects with the confidence that they can bridge the gap and create truly regenerative buildings - good for our people, culture and the planet.

This initiative along with the new Living Future Accreditation course and Technical Working Group, are designed to remove barriers and help projects achieve Living Future Programs.

The more we can help projects come on board, build knowledge in our region and demystify the LBC, the more we can build momentum and achieve our goal.



TECHNICAL WORKING GROUP

Using their extensive expertise out Technical Working Group works voluntarily to contextualise Living Future programs to Australia and develop crosswalks with local standards. Thank you so much for all of the work that you do.



JONAS BENGTSOON
EDGE ENVIRONMENT



FIONA CAULFIELD
TRICIA LOVE
CONSULTANTS



DAMON CUMING
HOMES VICTORIA



SIMONE DELANEY
VICINITY CENTRES



LACHLAN FINN
STANTEC



DEEPAI GHADGE
PANGOLIN ASSOCIATES



LAURA GUCCIONE
BLUESCOPE



JOVANA KLIKOVAC
LCI CONSULTANTS



ANDREW LING
POSITIVE CHANGE
BUILDINGS



RORY MARTIN
FRASERS PROPERTY
AUSTRALIA



**SAMANTHA
MCGAVOCK**
DONE



CLARE PARRY
DEVELOPMENT
VICTORIA



ANDREW SCERRI
MIRVAC



NICOLA SMITH
LFIA TECHNICAL
OFFICER



GUY WILLIAMS
DELOITTE



**VICE CHAIR:
LOUISE NORTON**
TOUCHSTONE
PARTNERS + LFIA
BOARD MEMBER



CHAIR: KATIE FALLOWFIELD
WSP AUSTRALIA + LFIA BOARD
MEMBER



DECLARE®

70

ACTIVE DECLARE
LABELS IN
AUSTRALIA

24

ACTIVE DECLARE
MANUFACTURERS IN
AUSTRALIA

887

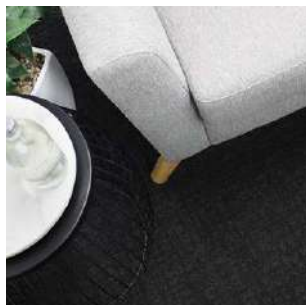
ACTIVE DECLARE
LABELS
WORLDWIDE

We're delighted that the Declare® program has gone from strength to strength - increasing from 48 to 70 labels here in Australia over the past year, and with several more from new and existing manufacturers in the pipeline.

The Declare transparency platform is helping to shift our built environment towards healthy materials, and giving specifiers the ability to make informed choices. Through transparent disclosure of ingredients, Declare creates industry awareness and contributes to phasing harmful materials out of production. The ILFI Red List represents the “worst in class” materials, chemicals, and elements prevalent in the building products industry, that are known to pose serious risks to human health and the greater ecosystem.

Our focus for the year ahead is to continue to build the momentum, endeavouring to include as many different product types as possible - a useful resource for industry professionals, and helping Living Building Challenge project teams meet the stringent materials requirements within the world's most rigorous building performance standard.

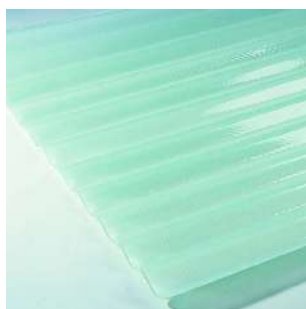
Declare. SM



1 ACOUSTIC PANEL
1 CARPET TILE
RED LIST FREE
ACOUFELT



ELECTRICAL
CONDUITS + FITTINGS
RED LIST FREE
ALBATECH (EVCCO)



WOVEN GLASS
SKYLIGHT
RED LIST APPROVED
AMPELITE



15 RUGS
RED LIST FREE
ARMADILLO



MORTICE LOCK
RED LIST FREE
ASSA ABLOY



5 ACOUSTIC
PRODUCTS
RED LIST FREE
AUTEX



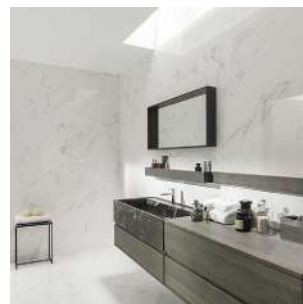
MASONRY
RED LIST FREE
**BRICKWORKS
BUILDING
PRODUCTS**



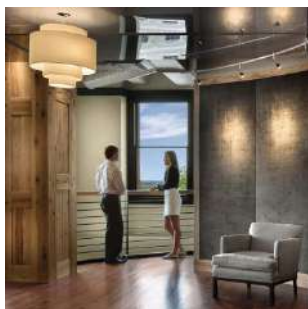
ALUMINIUM SYSTEMS
RED LIST FREE
CSR HIMMEL



ACOUSTIC PRODUCTS
RED LIST APPROVED
CSR MARTINI



2 CERAMIC TILE
PRODUCTS
RED LIST FREE
EARP BROS



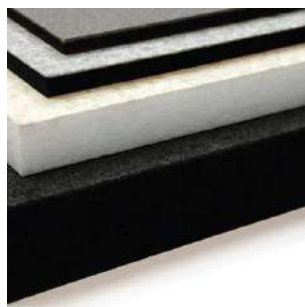
1 ACOUSTIC INFILL
1 ACOUSTIC CEILING
RED LIST FREE
FABRITRAK



3 FURNITURE
PRODUCTS
DECLARED
**FURNITURE BY
DESIGN**



14 FLOORING
PRODUCTS
RED LIST FREE
**GHC COMMERCIAL
GODFREY HIRST
FELTEX**



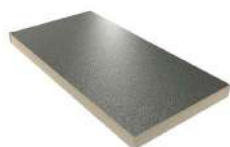
2 ACOUSTIC PANELS
RED LIST FREE
**INSTYLE
INTERIOR
FINISHES**



2 ACOUSTIC
PENDANT LIGHTS
DECLARED
LUXXBOX



MECHANICAL FAN
RED LIST APPROVED
**PACIFIC
VENTILATION**



THERMAL
INSULATION PANELS
RED LIST FREE
**PIRMAX
CSR BRADFORD**



5 FURNITURE
PRODUCTS
RED LIST FREE
SCHIAVELLO



4 FLOORING
PRODUCTS
1 RED LIST FREE
3 DECLARED
**SIGNATURE
FLOORING**



WALLING SYSTEM
RED LIST APPROVED
SPEEDPANEL



TIMBER ACOUSTIC
PANEL
RED LIST FREE
TROLDTEK



3 ACOUSTIC FINISHES
RED LIST FREE
WOVEN IMAGE

BIOPHILIC DESIGN INITIATIVE

ADVISORY PANEL



CHAIR: SUZIE BARNETT
JUNGLEFY



APRIL MCCABE
CRED CONSULTING



GRAHAM CHALCROFT
VERTEBRAE



MICHAEL BRADBURN
RICHARD CROOKES
CONSTRUCTION



SACHA COLES
ASPECT STUDIOS



SAMANTHA HAYES
BIONEERING
AUSTRALIA



SCOTT WEST
HANSON YUNCKEN



STEPHEN CHOI
ARCHITECTURE FOR
CHANGE



WAMINDA PARKER
MACQUARIE
UNIVERSITY





WHY THE RISE OF BIOPHILIC DESIGN IN 2021?

Being confined involuntarily is one way to very dangerously impact mental and physical health - we've seen the effects from research undertaken in prisons. Conversely, just by spending short amounts of time in an urban environment with elements of our wild world, elicits a biophilic response that contributes to wellbeing and happiness even when you're not physically immersed in an unspoilt wilderness. Note - the amount of time one spends in nature isn't the only element to consider - it's the benefit of feeling connected to the natural world that matters. Hence the importance and growing interest in biophilic design. - **Stephen Choi**

The unprecedented scale of the bushfires and impacts of the COVID-19 pandemic has brought to the fore the importance of outdoor environments to human health and care for the natural environment. Through this process there has been much greater awareness of how nature in our cities, regional and rural areas plays an essential role in supporting and promoting our physical, mental and emotional wellbeing; servicing both people and the planet. - **Waminda Parker**

HOW BIOPHILIC DESIGN WILL SHAPE THE NEXT 10 YEARS?

The concepts of a thriving society and strong economy can no longer be thought about as separate from, or mutually exclusive to, a thriving natural environment. Our approaches to industry and development can be inspired by natural systems and connected with them, and biophilic design offers a way to bring people, nature and built environment together in an experiential way in the day-to-day. This is so important for supporting this repositioning of people as part of a complex system, and not just the dominating force in the hierarchy. - **Samantha Hayes**

Designers have been focusing more acutely on placemaking for several years now and Covid has highlighted the importance of happiness, health and a connection to place. This resonates with people in everyday life, and biophilic design can provide these positive impacts that people are searching when visiting a building or space. - **Scott West**

Humans are the smartest species on the planet, but we can no longer build to dominate nature. Instead, we must be inspired by and work with nature, weaving it into the fabric of our cities, knowing that nature is more resilient and restorative than anything else on the planet. In the next decade, biophilic design will be at the heart and core of everything we do, to restore, rebalance and rekindle our connection to nature. - **Suzie Barnett**



LIVING FUTURE ACCREDITATION

REGIONAL INTENSIVE COURSE

Living Future Accreditation (LFA) is a professional credential, created by the International Living Future Institute (ILFI), that recognises proficiency in the world's most ambitious, regenerative and holistic design standards. Every Living Building Challenge project requires an LFA on their project team.

For the first time, LFIA took a cohort through a blended 16 week LFA program + regional intensive. It made the most of online content, grounded in local context and created an ongoing community of practice to support one another. We're proud to introduce our first cohort and look forward to many more in the years to come.

2021 COHORT



BRETT GRIMLEY



CAROLINE PIDCOCK



CELESTE HEVEY



CHRIS BUNTINE



CLAUDIA CHOLAKIAN



DELIA NGAYNGAY



EVA ZHANG



JANE DONALDSON



JAY DEE DEARNESS



JULIA HALIOUA



KALYNA SPARKS



KATIE FALLOWFIELD



LORETA BRAZUKAS



MARK EDMONDS



MIA ASKER



NICOLA SMITH



RACHEL HUR



RICHARD STOKES



SHARRON RICHARDS



SOPHIE HUTCHINSON



TALINA EDWARDS



TIM WILLIAMS



**VALERIE
SAAVEDRA LUX**

COURSES + EVENTS

BUILDING SOCIALLY JUST FOUNDATIONS

Nicholas Bernhardt (Informed 365) and Peter Morris (Reconciliation Australia) joined our guests to discuss the challenges and opportunities for progressing social justice in the built environment.

BUILDING SOCIALLY
JUST FOUNDATIONS

SPONSORED BY:
INFORMED 365

INTRODUCTION TO THE LIVING BUILDING CHALLENGE®

LFIA hosted two webinars to introduce the principles behind the Living Building Challenge®.

INTRODUCTION
TO THE
LIVING BUILDING
CHALLENGE

TECHNICAL ADVISORY FIRESIDE CHAT

LFIA hosted members and partners for a virtual Q&A about our new Technical Advisory Services and discuss the importance of this next step.

LFIA ADVISORY
FIRESIDE
CHAT

LIVING FUTURE
INSTITUTE
AUSTRALIA

SYMPOSIUM GREENHOUSE

Cultivating ideas to shape 'Regenerate' 2022

BIODIVERSE BUILDINGS
OCTOBER 26, 2021

STRATEGIC OFFSETTING
NOVEMBER 9, 2021

HEALTHY MINDS INSIDE
NOVEMBER 16, 2021

BUILDING EQUITY
NOVEMBER 23, 2021

SYMPOSIUM GREENHOUSE WORKSHOP SERIES

To plant the seeds for ideas that will inform Symposium 2022, LFIA hosted the 'Symposium Greenhouse' workshop series. Attendees and guest speakers discussed different aspects of regenerative building, including biodiversity, offsetting, mental health and equity.

OUR PRESENCE

ILFI and LFIA projects and initiatives were frequently cited in mainstream and sustainability-focused media outlets.

**The
Guardian**

**ARCHITECTURE
& DESIGN**

ARCHITECTUREAU

The Sydney Morning Herald

THE FIFTH ESTATE **V** OUR PLANET
OUR BUSINESS

“This new thinking is rich in possibility, bringing a “living systems” understanding to engineering, radically changing the way we collaborate and fundamentally reshaping our industry.” **THE FIFTH ESTATE**

“[Burwood Brickworks] produces more energy than it consumes, captures and re-uses all the water it needs, incorporates biophilic design, avoids the use of toxic and worst-in-class building materials, and has a net positive waste impact.” **ARCHITECTURE & DESIGN AU**

“With the Living Building Challenge, we liked that you not only create a healthy home,” says Todd, “but you consider how that healthy home is creating a healthy environment and community” **DWELL**

“Previously, there was a lack of transparency in the use of chemicals. At the SEC and elsewhere, Harvard is a living laboratory of clean building challenges.” **ARCH DAILY**

“Miller Hull’s 5 certified Living Buildings and the dozens of others that are out there now show that designing, building and operating or living this way is absolutely possible.” **TREEHUGGER**

“Burwood Brickworks is one of the only regenerative buildings in the world that is truly open to everyone every single day.” **STEPHEN CHOI IN ARCHITECTURE & DESIGN**

“The benefits of biophilic design have been linked to an extraordinary number of positive health improvements, physically, psychologically and socially both short and long-term.” **SUZIE BARNETT FOR SYDNEY MORNING HERALD**

SOCIAL MEDIA

LFIA and ILFI continue to innovate in these times where traditional communication channels are challenged. We are building strong interest among our online communities and seeing growth in all our social media channels.

LFIA 2021

3270

LINKEDIN
CONNECTIONS
(2020: 2468)

1655

TWITTER
FOLLOWERS
(2020: 1631)

593

FACEBOOK
FOLLOWERS
(2020: 549)

1740

MAILING LIST
SUBSCRIBERS
(2020: 1708)

ILFI 2021

13209

LINKEDIN
CONNECTIONS

33695

TWITTER
FOLLOWERS

23194

FACEBOOK
FOLLOWERS

66023

MAILING LIST
SUBSCRIBERS

WIDENING OUR CIRCLE

LFIA has expanded its reach by speaking at external events and collaborating with organisations that share our vision.



FINANCIALS

STATEMENT OF COMPREHENSIVE INCOME FOR THE YEAR ENDED 30 JUNE 2021

	2021 \$	2020 \$
REVENUE AND OTHER INCOME		
MEMBERSHIPS	12,627	12,541
DECLARE LABELS	38,857	17,579
EVENTS	24,473	103,901
SPONSORSHIPS	89,000	100,001
DONATIONS RECEIVED	-	3,510
ADVISORY SERVICES	2,200	9,770
OTHER INCOME - GOVERNMENT		
COVID SUPPORT	39,189	59,069
INTEREST INCOME	2,036	-
TOTAL REVENUE	208,382	306,371
EXPENDITURE		
ADMINISTRATION COSTS	15,094	23,874
BAD DEBTS WRITTEN OFF	-	6,136
CONSULTANT EXPENSE	8,976	-
DEPRECIATION EXPENSE	908	1,027
EVENTS EXPENSES	300	27,214
EMPLOYEE BENEFITS EXPENSE	220,802	246,507
TOTAL EXPENDITURE	246,080	304,758
EXTRAORDINARY ITEMS	-	-
SURPLUS/(DEFICIT) FOR YEAR	(37,698)	1,613
RETAINED SURPLUS AT JULY 1	104,136	102,523
SURPLUS AT THE END OF THE FINANCIAL YEAR	66,438	104,136

FINANCIALS

STATEMENT OF FINANCIAL POSITION AS AT 30 JUNE 2021

	2021 \$	2020 \$
CURRENT ASSETS		
CASH AND EQUIVALENTS		
CASH AT BANK	101,535	98,618
TRADE AND OTHER RECEIVABLES		
RECEIVABLES	21,774	46,484
ACCRUED INCOME - JOBKEEPER PROGRAM	-	-
TOTAL CURRENT ASSETS	21,774	151,102
NON-CURRENT ASSETS		
OFFICE EQUIPMENT	3,080	3,080
LESS: ACCUMULATED DEPRECIATION	(2,662)	(1,754)
TOTAL NON-CURRENT ASSETS	418	1,326
TOTAL ASSETS	123,727	152,428
CURRENT LIABILITIES		
PAYABLES	7,061	20,704
DECLARE LABELS - USA	13,643	2,729
EMPLOYEE BENEFITS	2 36,585	24,859
TOTAL CURRENT LIABILITIES	57,289	48,292
TOTAL LIABILITIES	57,289	48,292
NET ASSETS	66,438	104,136
EQUITY		
RETAINED SURPLUS	3 66,438	104,136
TOTAL EQUITY	66,438	104,136

LFIA ROLE

TO DRIVE SUSTAINABLE
CHANGE IN THE AUSTRALIAN
BUILT ENVIRONMENT
THROUGH THE RAPID UPTAKE
OF REGENERATIVE DESIGN



LFIA BOARD MEMBERS



TOM GROSSKOPF
CHAIR
SEE OPPORTUNITIES



KATE HARRIS
VICE CHAIR
AUSTRALIAN PUBLIC
SERVICE COMMISSION



KATE DOYLE
SECRETARY
INDEPENDENT
CONSULTANT



LOUISE NORTON
TOUCHSTONE
PARTNERS



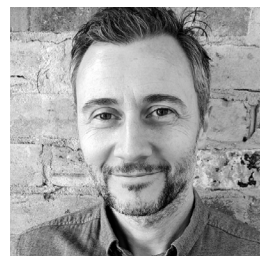
NEIL ARCKLESS
LENDLEASE



**PERI
MACDONALD**
ARK ASSET
MANAGEMENT



ROBERT WILCHER
KEYPOINT LAW



**SCOTT
MATYUS-FLYNN**
INDEPENDENT
SUSTAINABILITY
CONSULTANT



**SUZIE
BARNETT**
JUNGLEFY



DAN STURROCK
ARENA
INCOMING



KATIE FALLOWFIELD
WSP AUSTRALIA
INCOMING



VANESSA TROWELL
WESTON WILLIAMSON +
PARTNERS
INCOMING

THANK YOU TO OUR OUTGOING DIRECTORS



**VALE HARIS
MORIATIS**



K C GAULDINE
INTERNATIONAL LIVING
FUTURE INSTITUTE



PAOLO BEVILACQUA
FRASERS PROPERTY
AUSTRALIA



A TERM IN ONE PICTURE

Paolo Bevilacqua, on completion of his term as a Board Director and previous Chair, was asked to reflect on his time with LFIA through one picture.



2018 LFIA Symposium

I shed a few tears at this one to see so many people there. It was an overwhelming amount of passion and courage in one space. The most important thing you can do to bring change about is simply to get started.

“IF NOT NOW, WHEN? IF NOT YOU, WHO?”

- HILLEL THE ELDER

LIVING FUTURE HERO



VALE HARIS MORIATIS

1971-2021

Haris has been a champion of transformation for our civilisation for over two decades. A qualified Engineer, he dedicated his career to becoming one of Australia's most advanced thinkers in sustainable and restorative buildings.

His pursuit of knowledge to drive beyond sustainability in the built environment was insatiable with international Accreditations such as BREEAM, Green Star, LEED, GSAS-CGP, CEEQUAL as well as many other Australian environmental sustainability tools. He was instrumental in the delivery of quality sustainability outcomes in a large number of projects both in Australia and globally.

Beyond his paid work, Haris spent his time volunteering for organisations that made the world a better place. He played a crucial part in the development of Green Star in Australia and in more recent years Haris was a champion for the Living Building Challenge. He joined the Board in 2018 and actively worked with LFIA CEO Laura Hamilton-O'Hara to establish the Technical Working Group and drive the uptake of the Living Building Challenge in Australia.

Haris also significantly contributed to the organisation's strategic plan and was a strong industry advocate for Living Future programs.

Haris approached work with a curiosity to do more and achieve more. His energy and commitment to this was tireless. If he wasn't directly influencing outcomes on the projects that he was involved in, he would be organising an event or contributing to a meeting or committee that would raise awareness in others.

Haris was a beloved, energetic and active member of the green building movement in Australia for two decades and he believed passionately in a future that is *Socially Just, Culturally Rich and Ecologically Restorative*.

We are proud to honour Haris posthumously as a 2021 Living Future Hero.

LFIA TEAM



**LAURA
HAMILTON-O'HARA**
CHIEF EXECUTIVE OFFICER



ALEGRIA ALANO
COMMUNICATIONS +
COMMUNITY OFFICER



NICOLA SMITH
TECHNICAL OFFICER

COMMUNITY

We wish to acknowledge the following individuals, who have generously shared their time and knowledge.



SPECIAL THANK YOU TO STEPHEN CHOI
for supporting the LFIA team with the advisory services, LFA,
Technical Working Group and Biophilic Design Initiative.

JUST

Nicholas Bernhardt
Peter Morris

INTRO TO LBC

Sophie Hutchinson

LIVING FUTURE ACCREDITATION

Amanda Sturgeon
Ben Wilson
Dillon Kombumerri
Dr. Jianbin Wang
Dr. Robyn Overall
Guy Williams
Jason McLennan
Paolo Bevilacqua
Rory Martin
Tom Grosskopf

SYMPOSIUM GREENHOUSE

Chris Ewing
Guy Williams
Jay Van Rijn
Manish Amin
Meeghan Shellard
Nicholas Rapp

OUTSTANDING VOLUNTEERS

Adam Russell
Andrew Ling
Bob Wilson
Carmen Wilson
Caroline Pidcock
Chris Buntine
Claire Bowles
Fairouz Ghanem
Jane Toner
Jessica Chu
Kai Yang
Ken Long
Kylie Ashby
Loreta Brazukas
Nidhya Sakathevan
Oliver Boyd-Lambert
Olivia Leal-Walker
Richard Stokes
Roberto Padovani
Rohan Carroll
Sarah Lawlor
Simeon Yuen
Suma Narayana

OPERATIONAL PARTNERS



GECA (Good Environmental Choice Australia) is a purpose driven, not for profit that provides solutions for sustainable consumption and production. GECA generously provides the LFIA team with an office space.



Frasers Property Australia is one of Australia's leading diversified property groups, covering the development of residential, commercial, retail and industrial properties, and property management. Frasers Property generously provides the LFIA team with office space.

murchisons.

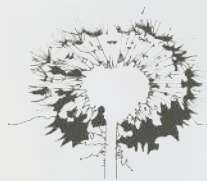
Murchisons Chartered Accountants advise businesses and owners across an array of industry sectors, from start-ups to large enterprises, with a tailored approach to reaching financial goals. Thank you to the Murchisons team for providing LFIA with pro-bono accounting support.



Craig Stump at Bluesix provides LFIA with website programming advice and services. With the technical support of Bluesix, we are able to create an online hub for our network on our website.

Midnightsky

Midnightsky support the Living Future Institute of Australia (LFIA) with their outstanding consultancy services. Midnightsky is working with the LFIA team to refine our purpose-driven strategy.



LIVING FUTURE
INSTITUTESM
AUSTRALIA

A SOCIALLY JUST, CULTURALLY RICH AND
ECOLOGICALLY RESTORATIVE FUTURE.