

# ANNUAL REPORT

2014



**LIVING FUTURE**  
INSTITUTE<sup>SM</sup>  
AUSTRALIA



# TABLE OF CONTENTS

## INTRO

3 Letter from the Chair

## LIVING PROOF

7 Living Building  
Challenge, Regional  
Projects

9 Living Building  
Challenge, Education +  
Training

9 Design Competition  
10 Declare  
10 JUST

## RESEARCH

13 Research

## TURNING HEADS. CHANGING MINDS.

17 Communications

19 Collaboratives

## FINANCIALS

25 Statement  
of Activities

## ACKNOWLEDGMENTS

29 Board

29 Heroes

30 Membership

32 Supporters

UniverCity Childcare Centre, Burnaby, BC  
Registered Living Building Challenge project



# LETTER FROM THE CHAIR



Hello, again.

It's been another big year for the Living Future Institute of Australia. Last year, Caroline and I said that we were in the 'ecosystem establishment phase'. I think it's safe to say that we still are, and that our growth is steady. We set some ambitious targets after our last Annual General meeting: to increase our membership base, increase the number of Collaboratives, increase the number of registered projects, and foster relationships

**WE SET SOME AMBITIOUS TARGETS AFTER OUR LAST ANNUAL GENERAL MEETING: TO INCREASE OUR MEMBERSHIP BASE, INCREASE THE NUMBER OF COLLABORATIVES, INCREASE THE NUMBER TO REGISTERED PROJECTS, AND FOSTER RELATIONSHIPS WITH UNIVERSITIES.**

with universities for research projects related to the establishment of the Living Building Challenge (LBC) in Australia. Some of the targets we met, and for those we didn't, we've made the appropriate adjustments.

To those of you whose names are on the back page, a huge and grateful thank you for your early investment in, and patience with us as we've worked through these early growing pains. This year, we will be able to offer some real benefits. We have stepped up our systems and resources so that we can now deliver training in the new tools, and we now have two fully-trained Australian-

based auditors to assess LBC projects. We also now have built the capacity to manage Australian memberships locally, rather than through the International Living Future Institute (ILFI).

The work of our Collaboratives - in Sydney, Melbourne, Brisbane, Adelaide, Perth, New Zealand, Canberra and Brisbane - has placed Australia once again as the third-highest concentration of volunteer activity in the world, after the US and Canada. We have had an increase in the number of registered projects in Australia, bringing us to a total of eleven, and since last year, have seen significant progress on the buildings pursuing the LBC in the region, with the official opening of the Sustainable Buildings Research Centre in Wollongong, and the Zero Energy House in Auckland - the first Net Zero Energy certified building in the southern hemisphere.

Last year, we set a goal of building relationships with universities to spur research, and we now have two research projects complete, and seven more in progress. This year, we are expanding the board, adding the skills we need to grow the organization. We'll be campaigning for new members, and hopefully demonstrating the benefits of membership through events, training, and local support for project teams.

We will also be building on the relationships created at the International Summits at the UnConferences with our New Zealand counterparts. We plan to collaborate on areas of mutual strategic interest, and pool our funds to bring international speakers to the region.

A virtuous circle has begun, where volunteer activity is increasing project registrations and project examples are increasing volunteer activity. The SBRC held its first official Open Day in October: it was attended by 600 people. The level of interest and enthusiasm was fantastic. Several people came up to our table and talked about what they were working on and how it aligned with our work. One woman in particular told me of decades of self-sustaining farming and how she was 'so happy to have found us'.

When we started the LFIA, we had a vision of our organization being a beacon, a gathering place, an umbrella under which like-minded people could work together, find natural partners, and combine our efforts to speed the transition to a restorative relationship with our world. It looks like we are on our way. Here's to the start of another year.

Mary Casey  
Chair of the Board







# LIVING PROOF

Image Caption, location





## LIVING BUILDING CHALLENGE: REGIONAL PROJECT HIGHLIGHTS

This year, we saw the completion of some of the first Living Building Challenge registered projects in Australia and New Zealand. This included the University of Wollongong's Sustainable Buildings Research Centre and the Tuhoe project in New Zealand. Both have completed construction and are moving into their performance period shortly. Huge congratulations to the project teams

on those pioneering projects.

We also saw growth in new project registrations with new projects in Victoria, Western Australia and New Zealand. We now have 12 projects in Australasia registered under the Living Building Challenge and Net Zero Energy Programs.



# LIVING BUILDING CHALLENGE: EDUCATION + TRAINING

With the announcement of the Living Future Challenge (which included the Living Building Challenge 3.0, Living Communities Challenge, and Living Products Challenge) at the UnConference in May 2014, training for instructors in Australia was required before we could deliver courses in the new tools. This instructor training is planned to be complete by the end of the 2014 calendar year for delivery of LBC 3.0 and Petal Workshops, and in early 2015 to deliver training in Living Communities.

Although formal training has not been offered this past year, the development of a proposed training program for 2015 has been drafted and will look to be rolled out early in the year.

In October 2013, Amanda Sturgeon, Vice President of the Living Building Challenge, visited the Australian Institute at the Sustainable Buildings Research Centre and trained Australia’s first auditors so that LFIA could certify Australian projects moving forward.

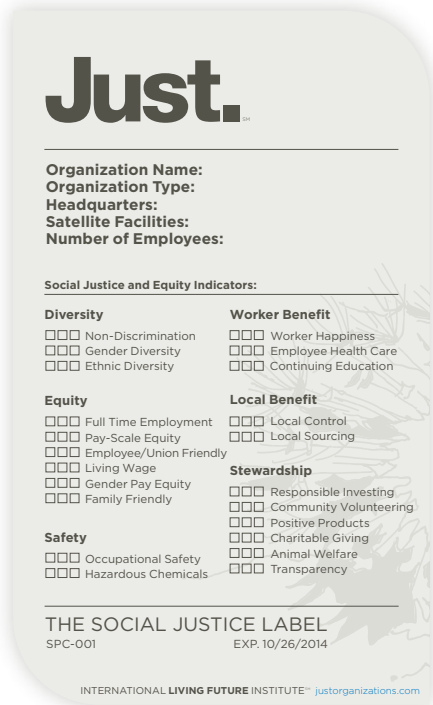
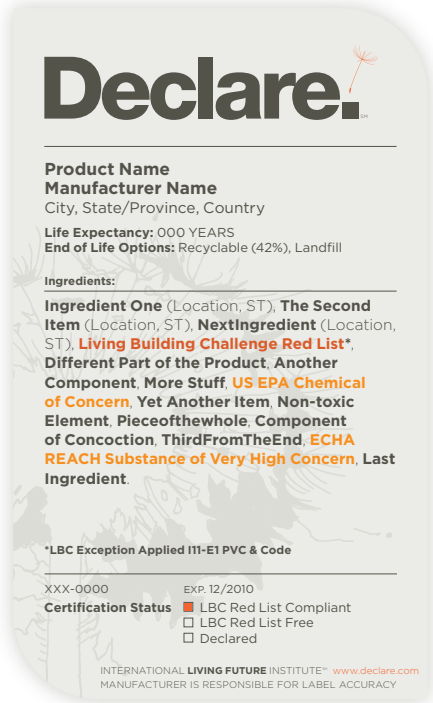
# LFIA DESIGN COMPETITION

The LFIA is currently calling for Expressions of Interests from parties looking to develop a deeply sustainable building or community within Australia to be the primary delivery Partner for their latest Australia-Wide Design Competition using the Living Building Challenge framework. Teams will be invited to respond to the Competition theme: Connection. By the end of the calendar year, the LFIA will issue an EOI to Parties interested in partnering with the LFIA for the successful delivery of the Design Competition. The LFIA is currently recruiting Project Sponsors.



## DECLARE AND JUST

The LFIA is planning a drive to engage local product manufacturers and suppliers in these two new programs in 2015. So far there are currently 16 Australian/New Zealand Declare labels and 1 Just company in New Zealand.







# RESEARCH

Hawai'i Preparatory Academy Energy Lab, Waimea, HI  
Certified Living Building  
Photo: Matthew Millman Photography



# RESEARCH

One of our core goals from last year was to partner with Academic Institutions to complete research into the application of the Living Building Challenge in Australia. This year, two student projects have been completed:

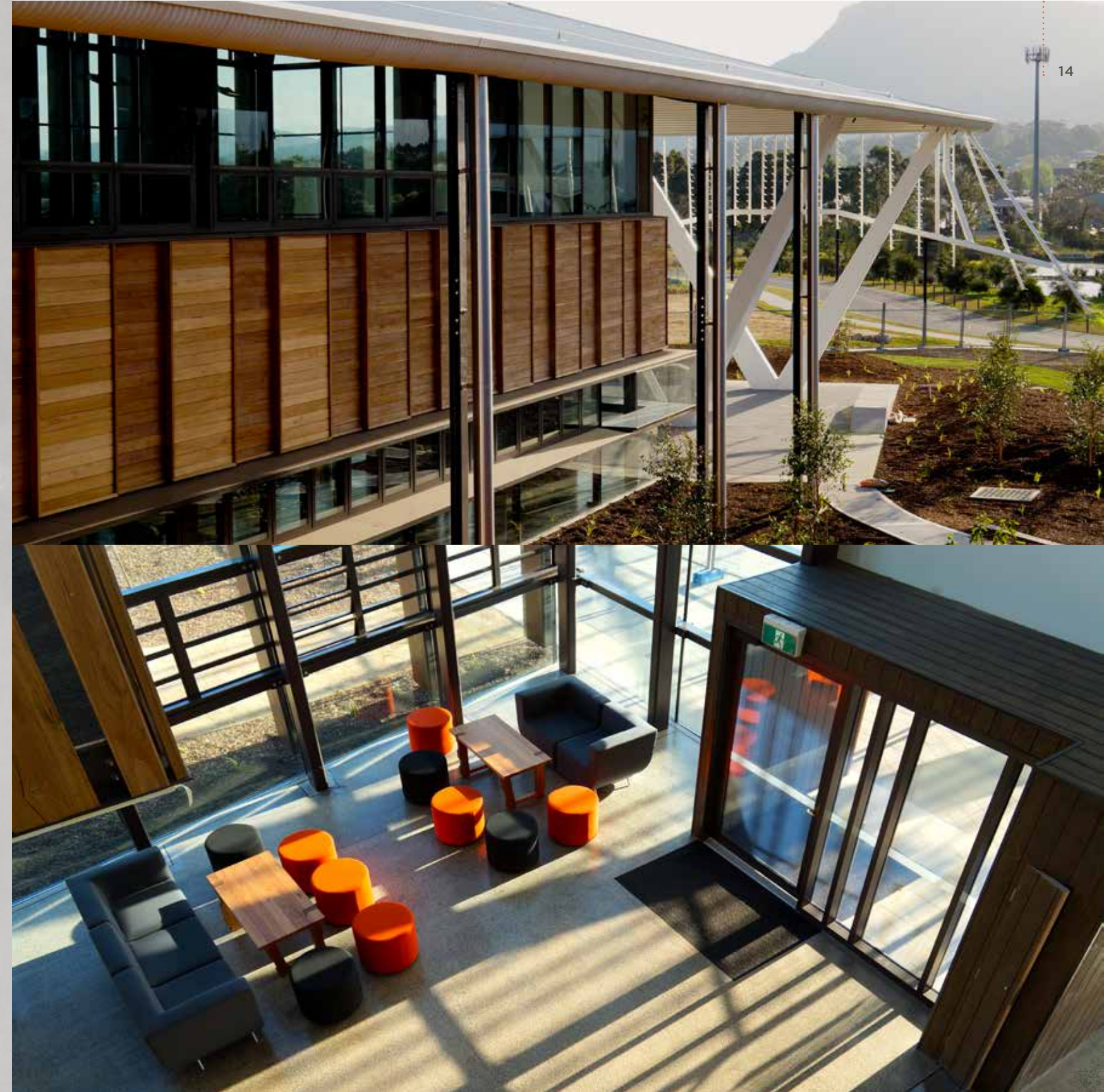
- University of Melbourne, *Lessons Learned from the Sustainable Buildings Research Centre in Australia*,
- University of Melbourne, Analysis of the potential interaction of the Living Building Challenge, One Planet Living, Biomimicry and Passivhaus frameworks.

In addition to the above completed projects, the following research is progressing:

- Limits to Growth: what might better define Australia's unique and sensitive ecological habitats, and how much separation between

these habitats and new development is appropriate?

- When and where is "Net Zero Water" an appropriate aim in terms of environmental outcomes?
- What regulatory barriers exist in relation to potable and non-potable water provision, and how might these be overcome?
- How can the materials petal in LBC 3.0 be better attuned to the Australian context?
- What are some good examples of successful biophilic design, and how can success be measured?
- Does Australia need its own "ICE database" when it comes to calculating embodied carbon?
- Are the human scale and humane places guidelines in the LBC appropriate to all countries?





**TURNING HEADS.  
CHANGING MINDS.**



# COMMUNICATIONS

We had a significant number of presentations made by board members this year. An example of these presentations are provided below:

- 'The Living Building Challenge in Australia', Hothouse Sydney/Total Environment Centre, [March]
- 'A Cool Future for a Hot Melbourne', Future Melbourne Network Climate and Design [May]
- 'Sydney Collaborative Beauty Tour' at the Collaborative Summit, Living Future UnConference [May]
- 'Lessons Learned from LBC Pioneers', Living Future Unconference [May]
- 'Engineers Australia on Sustainable Building Materials: What's next?: Focus on Materials Petal, the Red List, Declare, Just and the Sustainable Buildings Research Centre', Melbourne [May]
- 'Sustainable Construction and Renovation Focus', Australasian Campuses Towards Sustainability (ACTS), Sydney Basin Regional Meeting [July]
- Living Future 14 UnConference Download at UTS Sydney [August]
- 'Introduction to a Living Future', World Green Infrastructure Conference, Australian Technology Park, Sydney [October]
- 'Inspiring Sustainable, Living Buildings', SBRC Open Day Symposium [October]
- 'Project Management Lessons Learned on the SBRC', SBRC Open Day Symposium [October]

Board members also authored several articles this past year, including:

- *Sustainability in Aged Care* in Australian Ageing Agenda, written by Mary Casey (March)
- Article in 2014's Spring Edition of *Trim Tab* on the Beauty Tour, written by Mary Casey and Stephen Choi (April)
- *Green Heroes*, Mary Casey was interviewed in Project Manager Magazine, The Sustainability Issue, (June-July)
- *Changing the game in green building certification*, written by Mary Casey in WME magazine (September).
- *Sustainable Buildings Research Centre*, written by Lance Jeffery, Futurac magazine, July/August 2014
- *SBRC Case Study*, interview with Lance Jeffery in Project Manager (AIPM, August)
- *Changing the game in green building certification*, written by Mary Casey, WME magazine September 2014

And in September, Dominique Hes and Chrisna Du Plessis published their book, *Designing for Hope* which includes a chapter on the Living Building Challenge.

47%

INCREASE IN UNIQUE  
WEB VIEWS

12

BLOG POSTS

580

TWITTER FOLLOWERS

100

LINKEDIN FOLLOWERS





## COLLABORATIVE UPDATES

Our eight Australasian Collaboratives have evolved and diversified their work this year with some exciting things happening. Here are some of the highlights from the past year:



## MELBOURNE

The Melbourne Collaborative has held collaborative meetings with between 5 and 25 people every month and have included presentations by Passivehouse Australia, Biomimicry Swarm and One Planet Living, a workshop about biomimicry, and the book launch of 'Designing for hope.'

Melbourne Collaborative was also part of the organising committee for Bill Reed's Integrated Project Delivery talks around Australia



## SYDNEY

The Sydney collaborative has met every month and have have been working on different topics including a session of 'deconstructing LBC 3.0' in multiple part workshops, House Calls' (i.e. people bringing their 'sustainability problem' for discussion), News from Portlandia & LBC 3.0 and exciting new tools and Lessons Learned on LBC Buildings in Australia.

Additionally, the Sydney Collaborative has organised Beauty Tour 2.0, which was held on 28th September in the City of Sydney. A mixture of old and new friends gathered on a sunny Sydney morning for a walk around the City's sites of 'beauty', as decided by Collaborative members and the public, which concluded in a picnic in the Botanical Gardens.

Sydney Collaborative also led marketing activities with Bioregional's Sustainability Integrator and Training Course and has also participated in the SBRC Open Day, with talks about the LFIA, the LBC, and the JUST Label.

## ADELAIDE

Rather than 'meetings', the Adelaide Collaborative has gone about creating events for public engagement. Adelaide Collaborative organized conversations about different petals of the Living Building Challenge: the Energy Petal in May 2014, the Water Petal in June 2014 and the Health & Happiness Petal in September 2014. All events have had between 25-40 attendees.

The Collaborative also participated to the Park[ing] Day Installation in September 2014 which is an international initiative that turns city car parks into public space. The Adelaide Collaborative chose to participate and create an installation where people whom engaged with the space would engage with concepts of sustainable design for the built environment. The Adelaide Collaborative works in close collaboration with the Adelaide Sustainable Building Network (ASBN).

## NEW ZEALAND

During collaborative meetings, NZ members worked on case studies and expanding the Declare program. In November 2013 the New Zealand Collaborative held talks about Declare, Materials and Biophilia. They also have organized working groups for the different petals of the Living Building Challenge during the 'Building Momentum' in April 2014. On June 2014, the Collaborative organized the 'From Portland to Auckland' public talk which focused on reporting from LF15, showcasing the first Declare label organisations, the first Living Future Net Zero Project certification and the David Trubridge intervention about 'Beauty Matters'.



BEAUTY TOUR

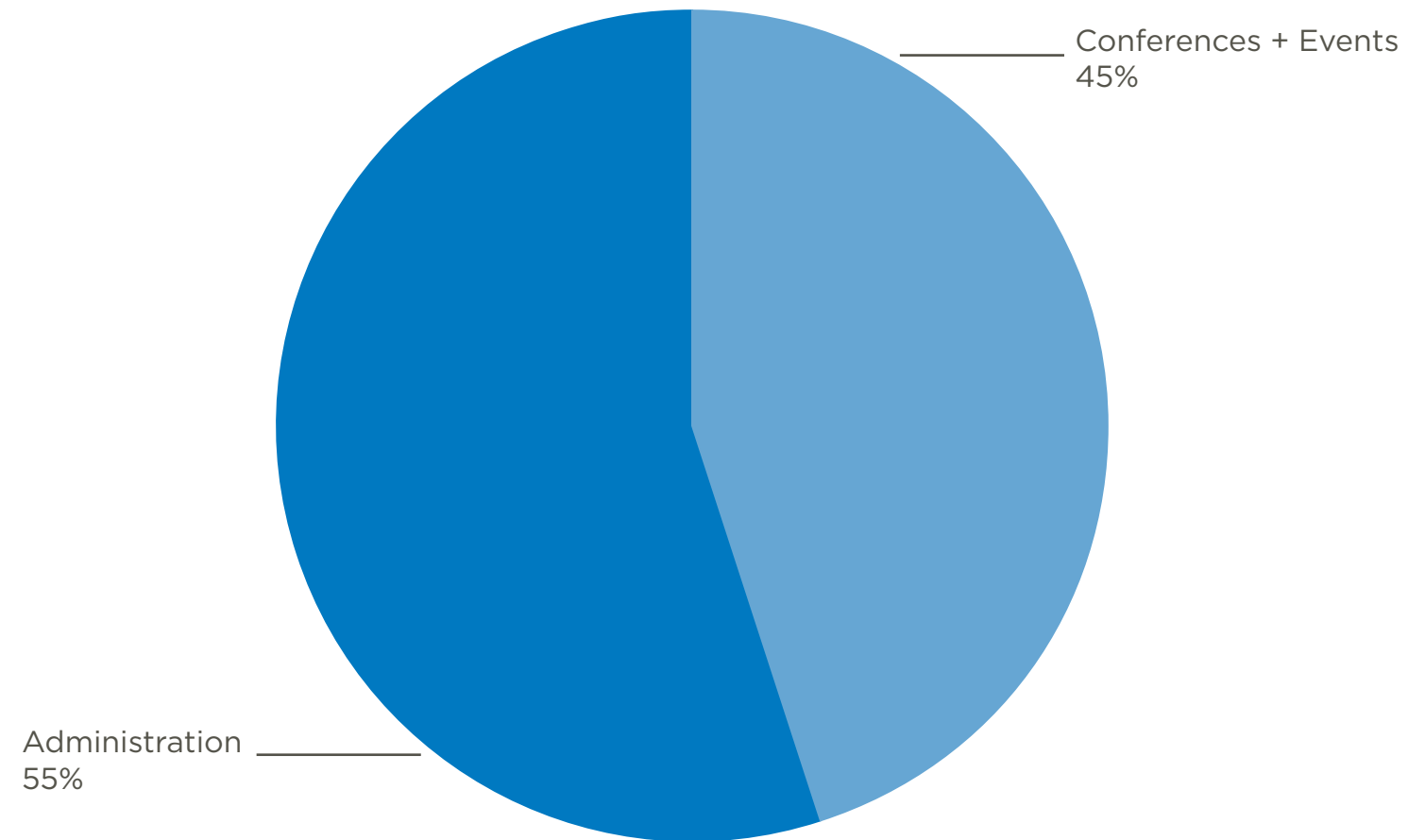
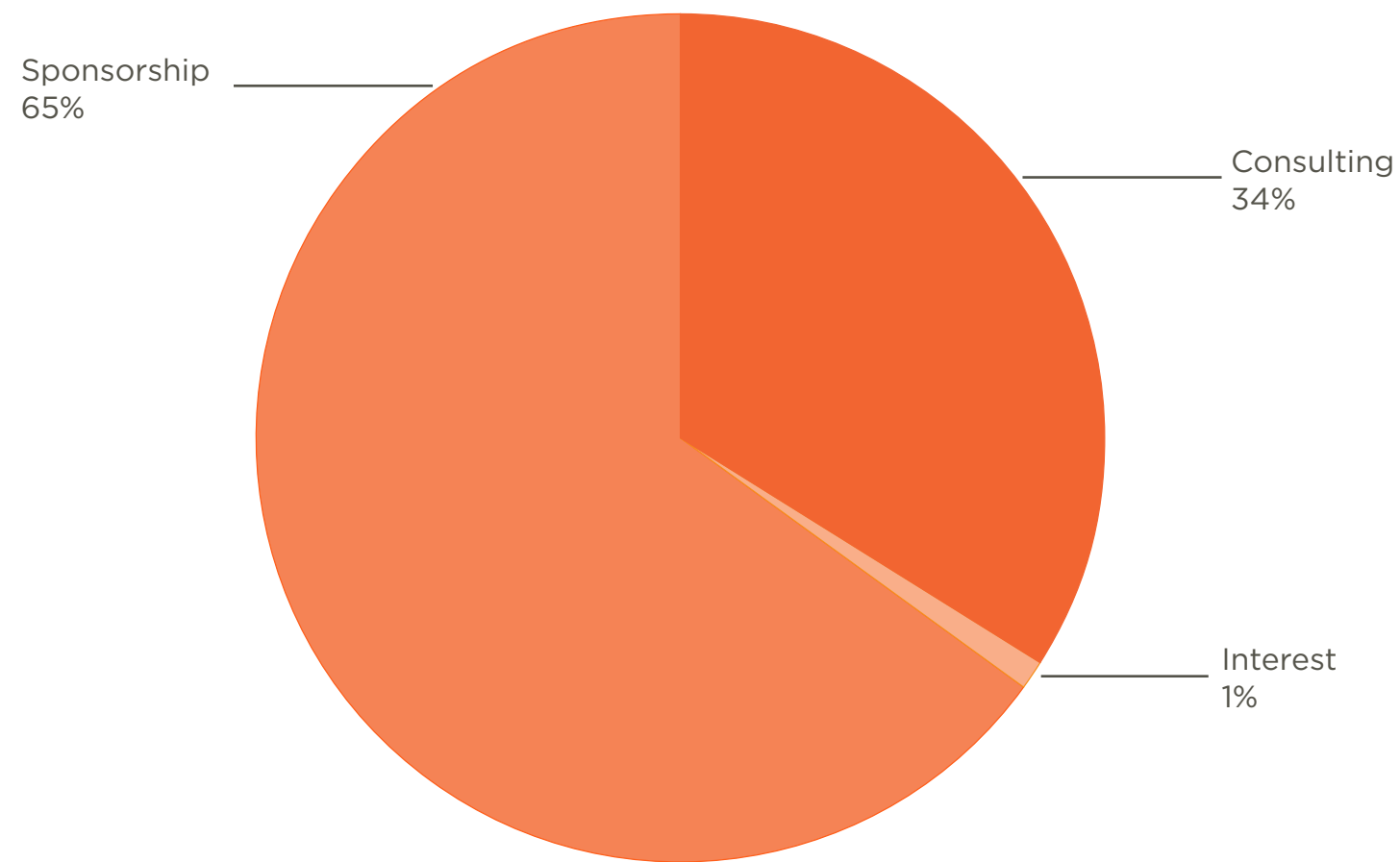




A photograph of a modern, single-story house with a dark roof and solar panels. The house is set in a lush, green environment with large trees and a grassy lawn. The sky is a mix of soft pinks, oranges, and blues, suggesting a sunset or sunrise. A large, semi-transparent blue circle is overlaid on the left side of the image, containing the word "FINANCIALS" in white, bold, uppercase letters. The circle is positioned over the left side of the house and the trees.

# FINANCIALS





# STATEMENT OF ACTIVITIES

The Living Future Institute Australia had a consolidating year last year with very little expenditure recorded as we settled in to correctly establishing and organising ourselves. We enter the 2014/2015 year in a great position with \$18,342.25 cash on hand and a commitment to drive membership, sponsorship and training activities to improve our cash position and enable the engagement of key staff members.

The statement of activities, September 2013 through August 2014 are presented above.

## Revenue

Sponsorship	65%	\$19,000
Consulting	34%	\$9,900
Interest	1%	\$219.29
Training	0%	\$0.10
Membership	0%	\$0.10
Total		\$29,119.49

## Expenditures

Administration	55%	\$8,176.50
Conferences/Events	45%	\$6,786.21
Training	0%	\$0.10
Fundraising	0%	\$0.10
Total		\$14,962.91



# ACKNOWLEDGMENTS



# LIVING FUTURE INSTITUTE OF AUSTRALIA BOARD

- Mary Casey, Chair, Associate Director, McLachlan Lister
- Lance Jeffery, Treasurer, Director, Hyve Projects
- Jeffrey Robinson, Secretary, Sustainable Design Leader, APAC, Aurecon
- Caroline Pidcock, Director, PIDCOCK – Architecture + Sustainability
- Dominique Hes, Lecturer, University of Melbourne
- Caitlin McGee, Research Director, Institute for Sustainable Futures UTS
- Digby Hall, Sustainability Leader, Aurecon
- Amanda Sturgeon, Executive Director, International Living Future Institute
- Lisa Miller, Executive Director (Acting), Office of Environment and Heritage NSW

## LIVING BUILDING CHALLENGE: HEROES

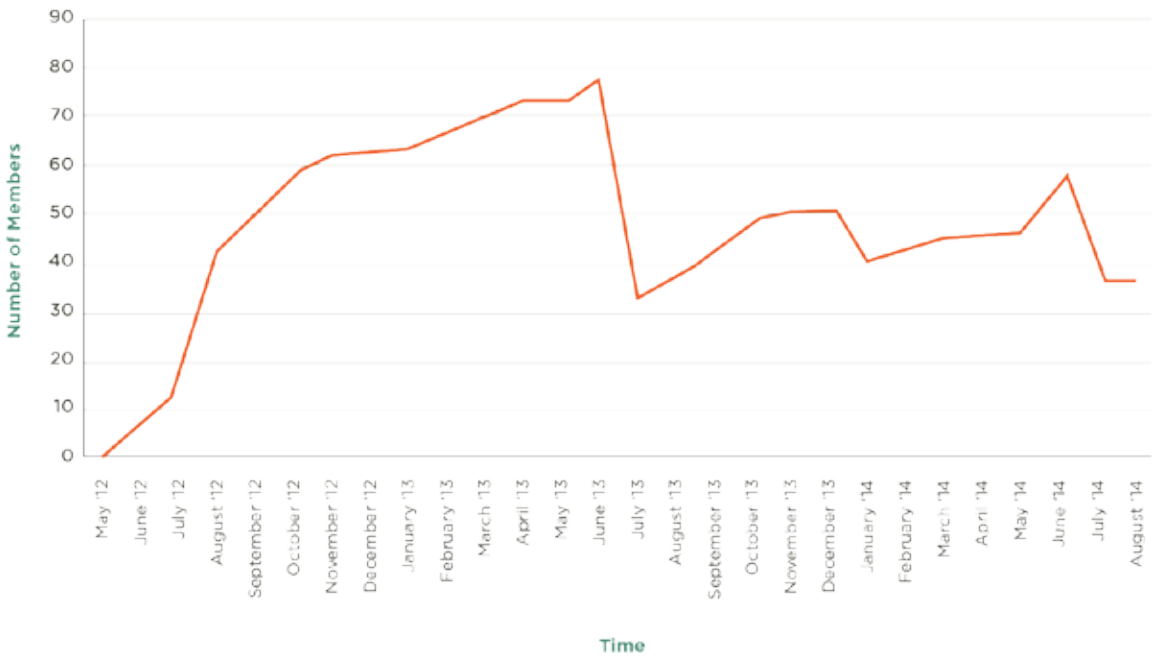
The Living Building Challenge has inspired significant change in how buildings are designed, built, rehabbed and operated. These successes are the result of tireless efforts made by individuals who have not only adopted the Living Building Challenge, but have also profoundly demonstrated how its principles can be used to rethink business as usual. These individuals have nurtured the Living Building Challenge as a movement—locally, regionally, nationally and internationally—and have led by example. In May 2014, the International Living Future Institute honored three of our own from Australia as LBC heroes. These included:

- Mary Casey, Chair of the Board and Facilitator of the Sydney Collaborative. Mary has been instrumental in the uptake of the Living Building Challenge in Australia.
- Lance Jeffery, Project Manager at Hyve Projects. Lance was the Project Manager of two key Living Building Challenge projects in Australia and is a current Director & Treasurer of the LFIA.
- Caroline Pidcock, Director of PIDCOCK – Architecture + Sustainability. Caroline is the past chair of the board of the LFIA and remains as a current Director helping to shape the future of the LFIA in Australia.

## MEMBERSHIP

The LFIA has revised its membership process during the past year in an effort to better service our local members. Previously handled overseas, the new membership portal will be managed in Australia by the LFIA and will enable more up to date information and communication with Australian members.

The membership history of the LFIA from Conception is shown in the chart below:





# MEMBERSHIP

- |                     |                    |                    |                    |
|---------------------|--------------------|--------------------|--------------------|
| Tim Adams           | Stephen Choi       | Dominique Hes      | Clare Parry        |
| Fernando Agustin    | Richard Clarke     | Judy Hollingworth  | Caroline Pidcock   |
| Derek Ashby         | Ian Cleland        | Suzette Jackson    | Chris Reardon      |
| Brandt Beattie      | Drew Clements      | Lance Jeffery      | Jeffrey Robinson   |
| Andrew Bennett      | Ed Cotter          | Heidi Lee          | Yen Ru Wu          |
| Ken Bezant          | Geoff Crosby       | Andrew Ling        | Warwick Savvas     |
| Nick Bishop         | Gineke de Haan     | Andy Marlow        | Reiner Schimminger |
| Elena Bondareva     | Ashley Dunn        | Rory Martin        | Katie Skillington  |
| Jacqueline Bosscher | Alyssa Ellenwood   | Sandra McEwen      | Jim Stewart        |
| Mary Bowe           | Emelia Fabris      | Leona McLaggan     | Matthew Tague      |
| Michael Bradburn    | Adolfo Fernandez   | Laura Meyer        | Sid Thoo           |
| Dylan Brady         | Kerry Gallagher    | Cynthia Mitchell   | Jane Toner         |
| John Brodie         | Claire Geary       | Griff Morris       | Jason Twill        |
| Steven Bruinsma     | Linda Haefeli      | Phil Mudge         | Tim Williams       |
| Chris Buntine       | Digby Hall         | Stephen Nall       | Mariela Zingoni    |
| Marine Calmettes    | Ania Hampton       | Blair Nolan        |                    |
| Mary Casey          | Zsuzsanna Haraszty | Kathryn O'Sullivan |                    |

# SUPPORTERS

GRATEFUL THANKS TO OUR SUPPORTERS THIS YEAR

