

# Serotine

noun  
late in developing or flowering

Serotine is a distinctively multisensory building, one that completely rethinks the sights, sounds, and smells of a retired brutalist structure through new, lightweight additions. These additions touch the earth lightly. They do not erode, disturb or infringe upon land. Rather, Serotine elevates and edifies. It stimulates and brightens, it generously provides. Serotine gives rise to a restored landscape, to nurture a restored community.

“The existing monuments form an ideal order among themselves, which is modified by the introduction of the new (the really new) work of art among them. The existing order is complete before the new work arrives; for order to persist after the supervision of novelty, the ‘whole’ existing order must be, if ever so slightly, altered; and so the relations, proportions, values of each work of art toward the whole are readjusted; and this is conformity between old and new. Whoever has approved this idea of order ... will not find it preposterous that the past should be altered by the present as much as the present is directed by the past.”

In ‘Tradition and the Individual Talent’ (1919) by TS Eliot



## Restorative & Regenerative

Indigenous land management practices increased the availability of native food and habitat for kangaroos, wombats, possums, emus, and birds. The design for Serotine deeply acknowledges this history through a considered composition of innate motifs, landscape practices and cultural sites of recognition and inclusion:

### Restoring Landscape

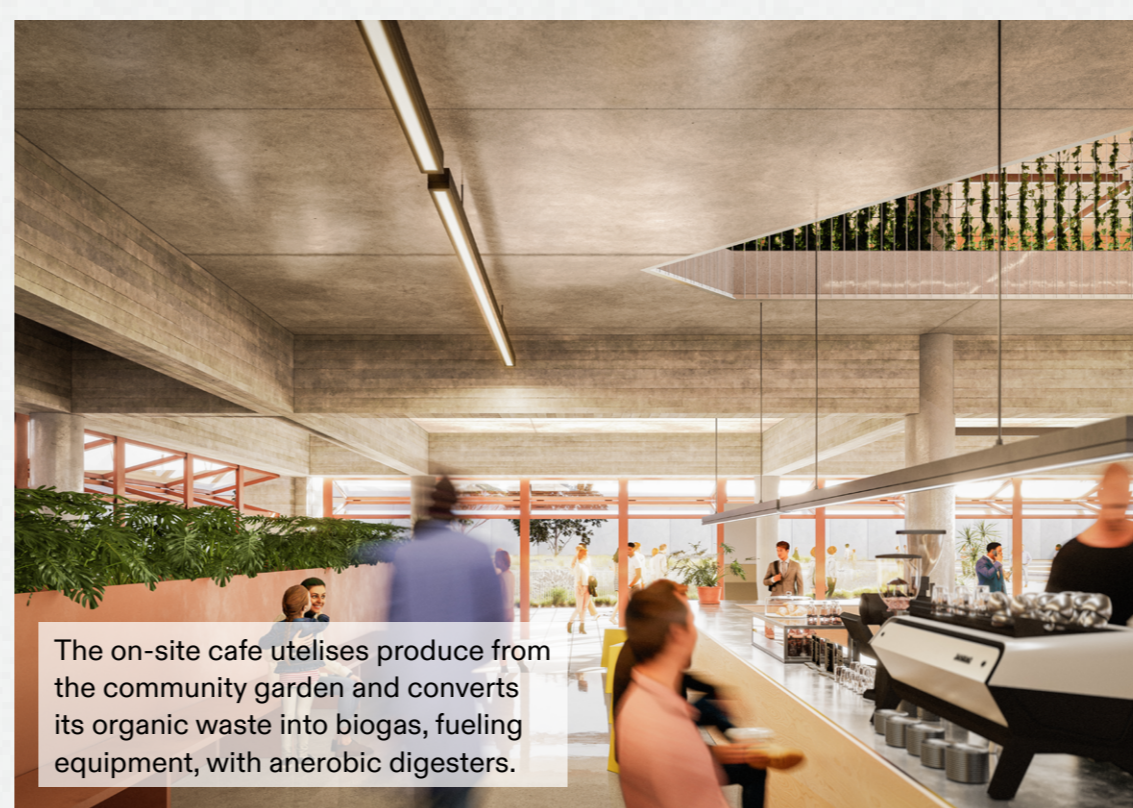
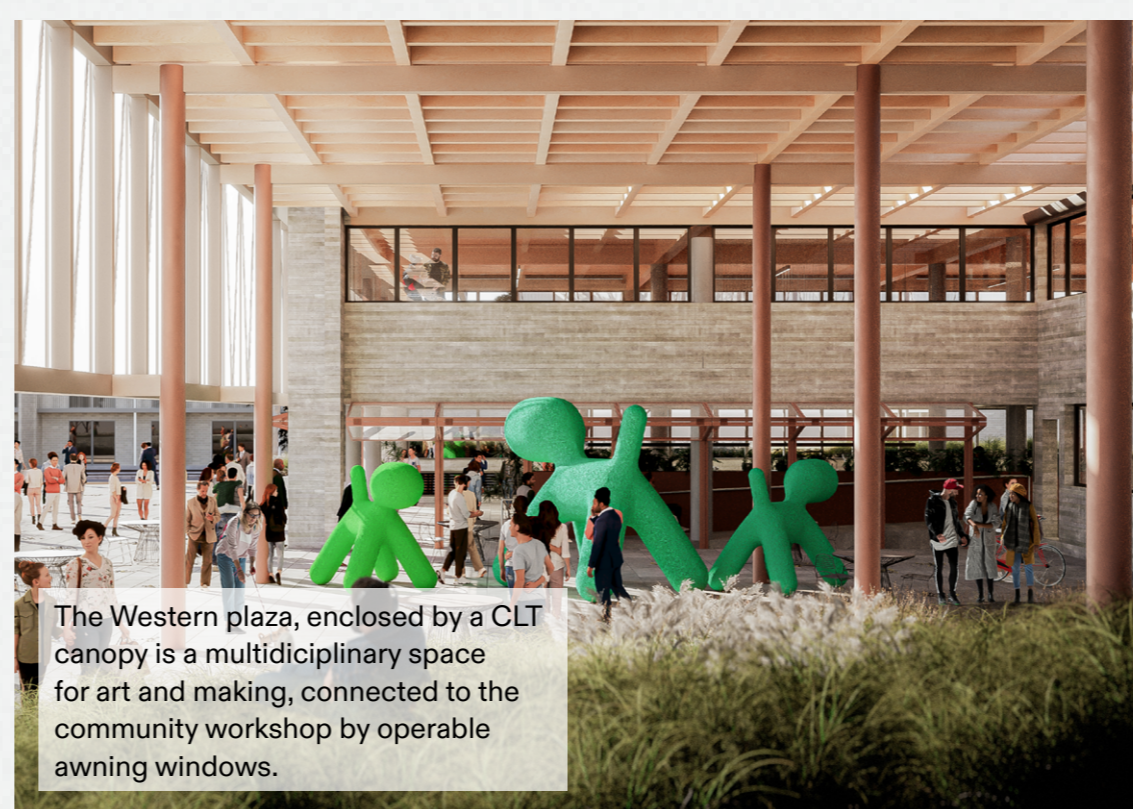
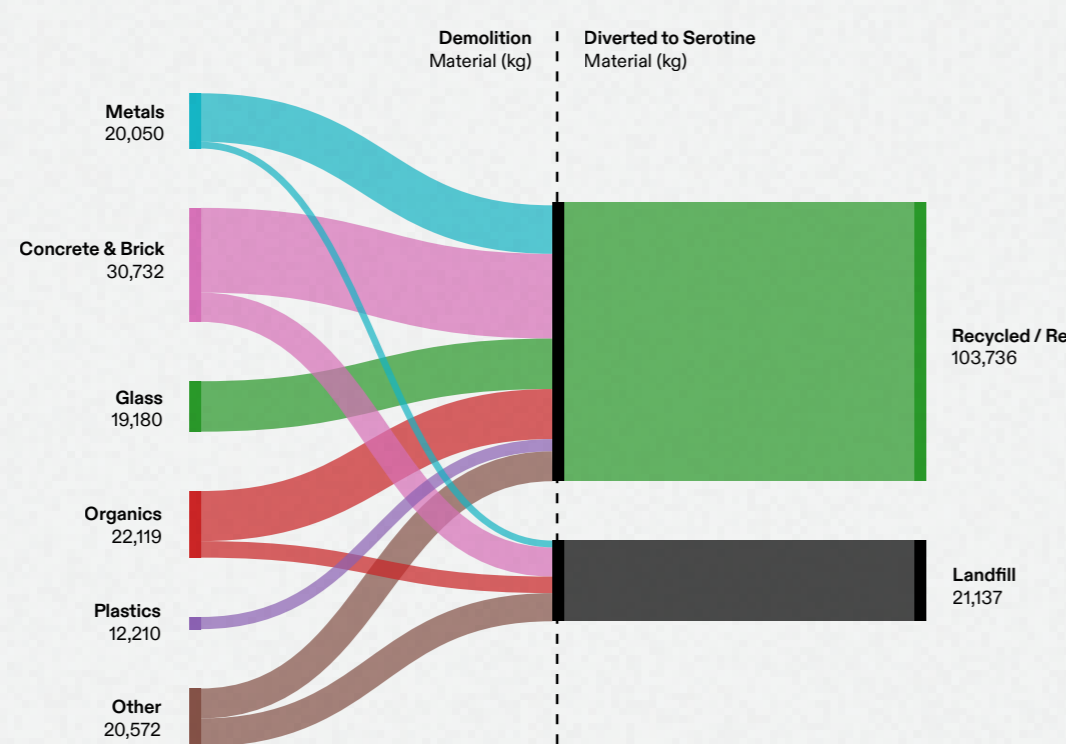
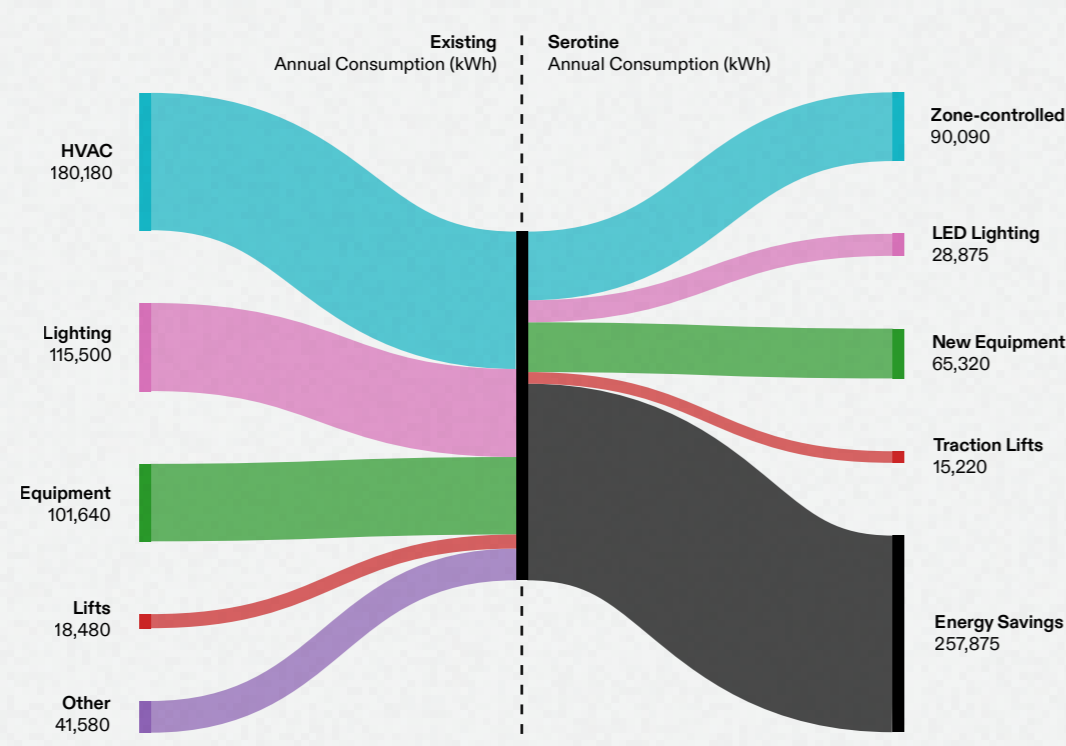
The site has been rewilded as a plains grassland and chenopod shrubland - its precolonial condition. Cultural burning practices are also supported.



**Supporting Animals**  
New landscape reinstates native wildlife and the wetlands provide respite for migratory Shorebirds on their journey across the East Asian-Australasian Flyway.

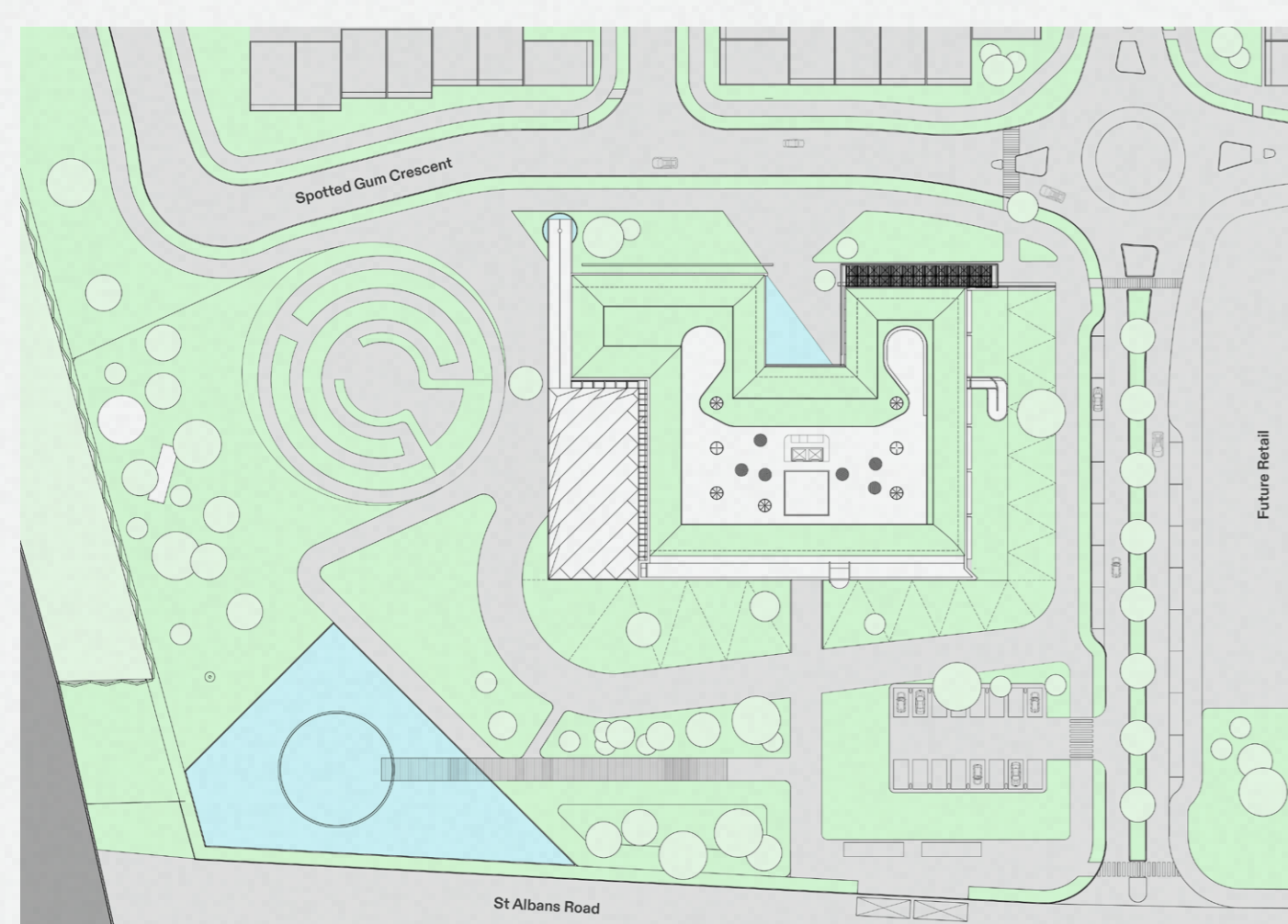


**Bioretention Basin**  
Designed to support a range of critically endangered species, many of which were traditionally used by First Nations peoples for bush tucker.



## Site Plan 1:500

- Natural Pool
- Wetland
- Wind Farm
- Amphitheatre
- Solar Array
- Urban Farm
- Bioretention
- Bus Station
- EV Carpark



## Architectural Design

With an extensive understanding of brutalist architecture, including its rarity in Australia, it was of utmost importance that the character and spatial relationships of the existing building be preserved.

As the former office for the Melbourne & Metropolitan Board of Works, the public utility board responsible for Melbourne's water supply and sewage treatment infrastructure, Serotine visually and quantifiably celebrates the structure's bygone purpose.

