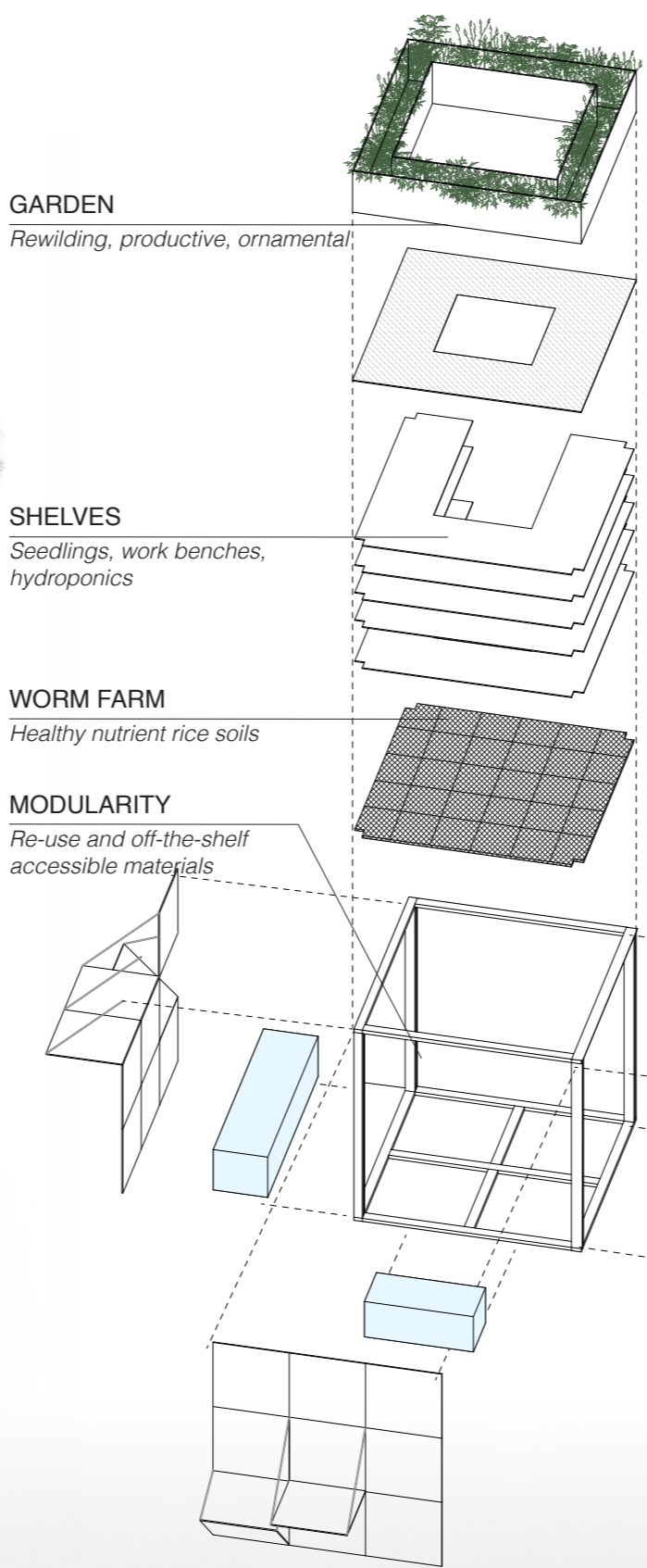
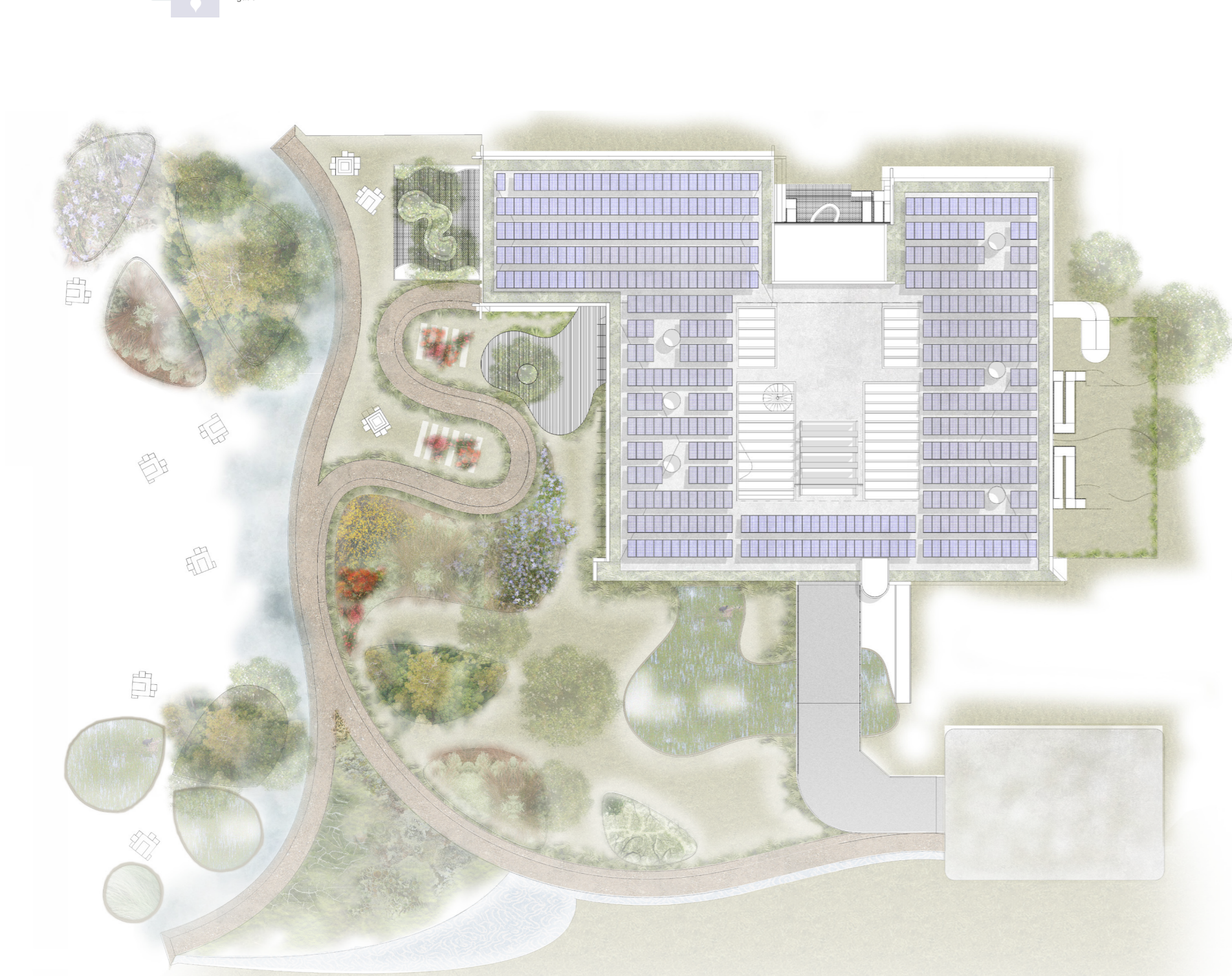
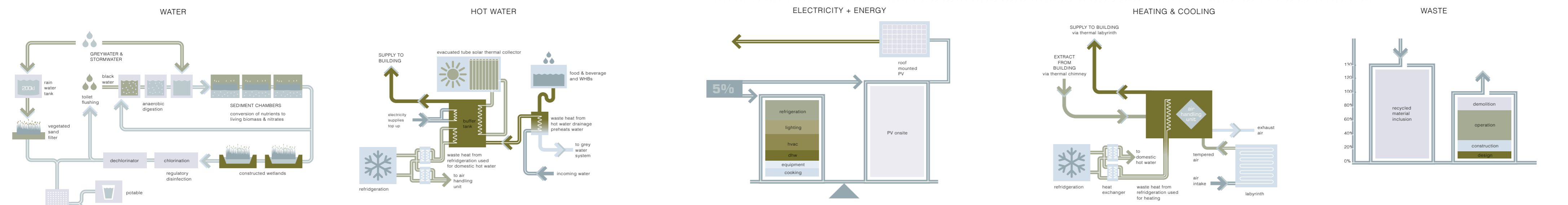
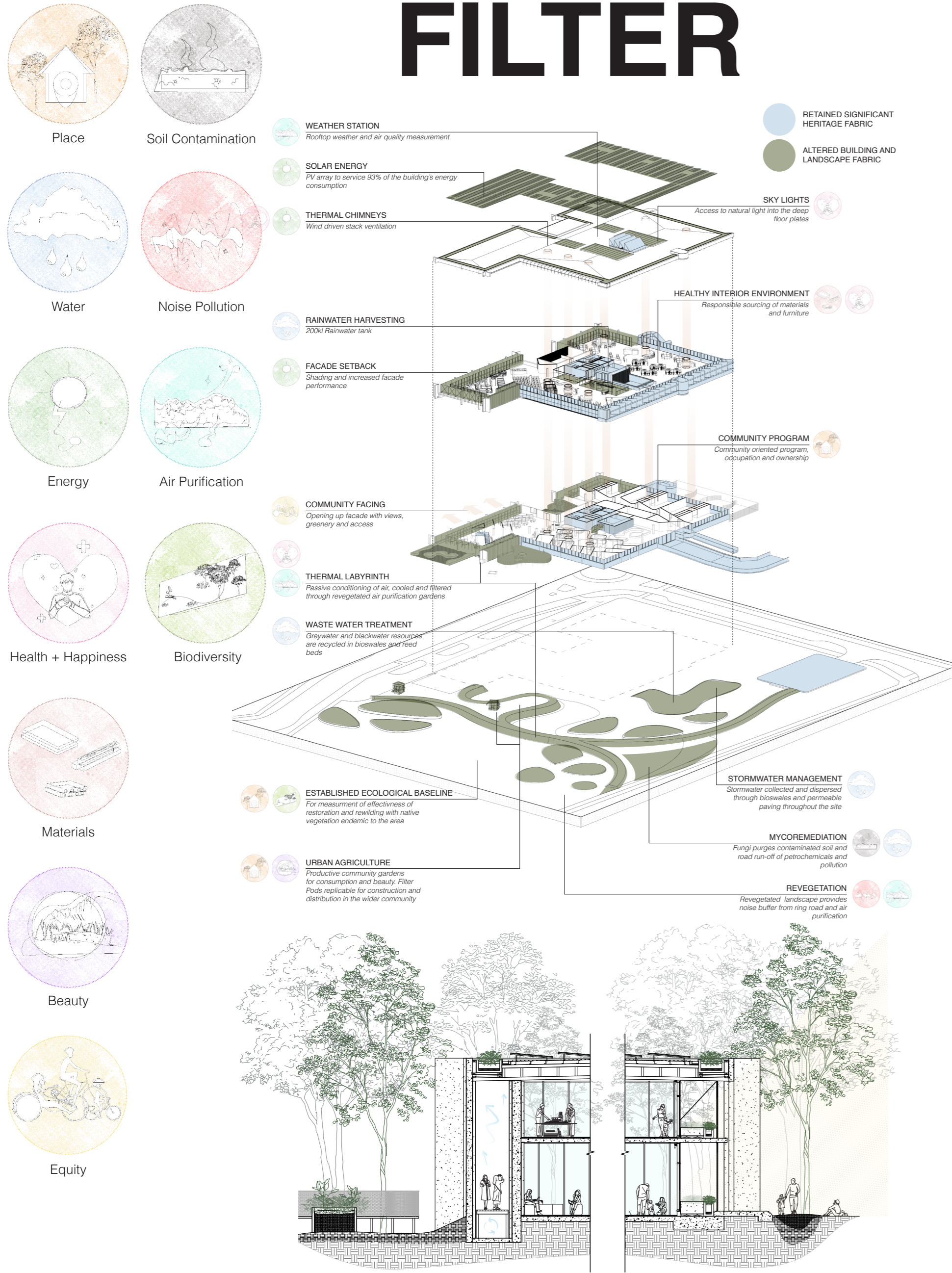


ILLUMANATE FILTER



Situated in a transitioning industrial zone, surrounded by contaminated sites, our proposal envisions the existing building and site as a filter, a provision of respite from the toxic remnant industry and a hopeful vision of the future.

The concept of filtering manifests through the design in 3 ways.

Building and site as environmental filter:
Provision of water cleaner than the neighbouring Stoney Creek, nutrient rich soil produced onsite for the production of food, the power of the sun harvested onsite as clean energy that powers the wider community, and native vegetation that populates the local area and encourages the return of rich biodiversity.

Filtered spatial experience through blurred interior boundaries and intermingled programme:
A heritage building transformed, refitted to serve the community through a range of services & uses, providing healthy interiors and outpacing clean resources.

Building as filter for the regenerative re-use of the building:
Offering a great opportunity to curb emissions by prolonging the useful life of materials already in place, especially those with long-life durability and high embodied energy, such as steel, aluminum and concrete.

A key element of the proposal is the incorporation of not only the 7 living building challenge petals, but also the addition of 4 site-specific petals that seek to tackle environmental issues pertaining to the immediate context and local community. These are:

- Air purification
- Soil remediation
- Noise pollution
- Rewilding and biodiversity

The addition of these extra petals assist in the design's ability to act as a filter not only for the environment, but also for the local community and future longevity of developments within the LUMA site.

The proposed design creates journeys to stimulate the senses and invites the local community, staff, and visitors to explore and experience the centre via the surrounding landscape. The varied textures and patterns in the materials and planting encourage visitors to not just look, but also touch and feel. Provision of allotments for productive fruit and vegetable gardens provide ways for the local community to not only work towards self-sufficiency, but also share meals and skills.

The surrounding landscape seeks to restore the remnant Indigenous landscapes and species, prioritising caring for Country through giving back to the land. Gardens unless otherwise stated become restorative lots for rewilding, with a focus on respecting the natural harmonies of the remnant Indigenous grasslands, flowers and their fauna counterparts. Native species are prioritised, with a broader aim of creating a restorative future.

As a solution to density in urban living environments, the filter pods address both issues of suburban biodiversity, whilst promoting a circular economy and self-sufficiency. The pods consist of a modular timber frame system, with bracket adjustable shelving. The external facade can be made of ready made timber plywood, available recycled materials at hand such as plastic sheeting or recycled timber, or be left open to the elements as a form of vertical garden. The flexibility of the system allows for users to configure the shelving as desired, widening or condensing shelves to suit their needs as garden beds, worm farms, water tanks or simple workshops and storage.



| | | | | | | | | | | | |
|---|---|--|---|---|---|---|---|---|--|---|---|
| THE LANDFILL Contaminated soil, Toxic gas, Endangered species, Endangered ecotone | INDUSTRY Plastics, endocomposites, + textiles factories, Ground pollution, Air pollution, Heavyway pollution. | THE HIGHWAY Western Ring Rd, Toxic fumes, Noise (periodic), Air pollutants + particles, Overdensity on + prioritising car transportation | THE RAILWAY Metropolitan train line (Dunbury) V-Line train line (Dunbury), Noise (periodic), Fumes (periodic), Connection + accessibility - prioritising communal + sustainable transport | THE ROAD Algae, Fumes + particles, Obstruction to foot connectivity + pedestrian routes, Obstruction to cycling connectivity, Soil contamination from road runoff | CLEANER SOIL Algae, Contaminants from the soil begin to be absorbed and filtered through the bonding pattern of fungi beds, As time moves toward the soil becomes cleaner, bugs begin to return, plants begin to grow, A thriving future germinates | CLEANER AIR Algae, Congested, toxic heavy air sweeps through the site, Fungi, eating and digesting carbon, the oxygen on their leaves as the air cools and filters downwards, The look of forms and roads further capture and filter out the carbon dioxide and toxins, This air is passively directed towards the interior, through a thermal labyrinth network, air quality begins to improve immediately | MENTAL + PHYSICAL HEALTH Checks begin to appear in the building as the dense facade is penetrated by greenery, Sunlight flows through the skylights, bathing the cold walls in warmth, Cool, clean air flows through the building, The community - the building begins to form a rhythm, The building begins to physically reflect its role as mediator of community connector + health | A VISION OF THE FUTURE Connected, healthy living, Strong community, Greenhouse + nature abundance, Bio-diverse + regenerative landscape | BIODIVERSITY + ABUNDANCE Native trees + vegetation are established, Native soils as the first and dominant filter, A clean + healthy environment supports a thriving community, Native species return, Productive gardens flourish, self-sufficiency becomes a reality | HEALTHY SOILS Healthy soils, Healthy crops, Healthy animals, Healthy humans | BUBBLING CREEK The filtering of runoff and stormwater enables the restoration of the creek, A restored creek sees the establishment of green corridors + increased biodiversity, Clean + clear waters, Nature + beautiful |
|---|---|--|---|---|---|---|---|---|--|---|---|