

THE BILLABONG

PROJECT BY LUMENARIES

Bring people, wildlife and community together through the power of water

REFLECT

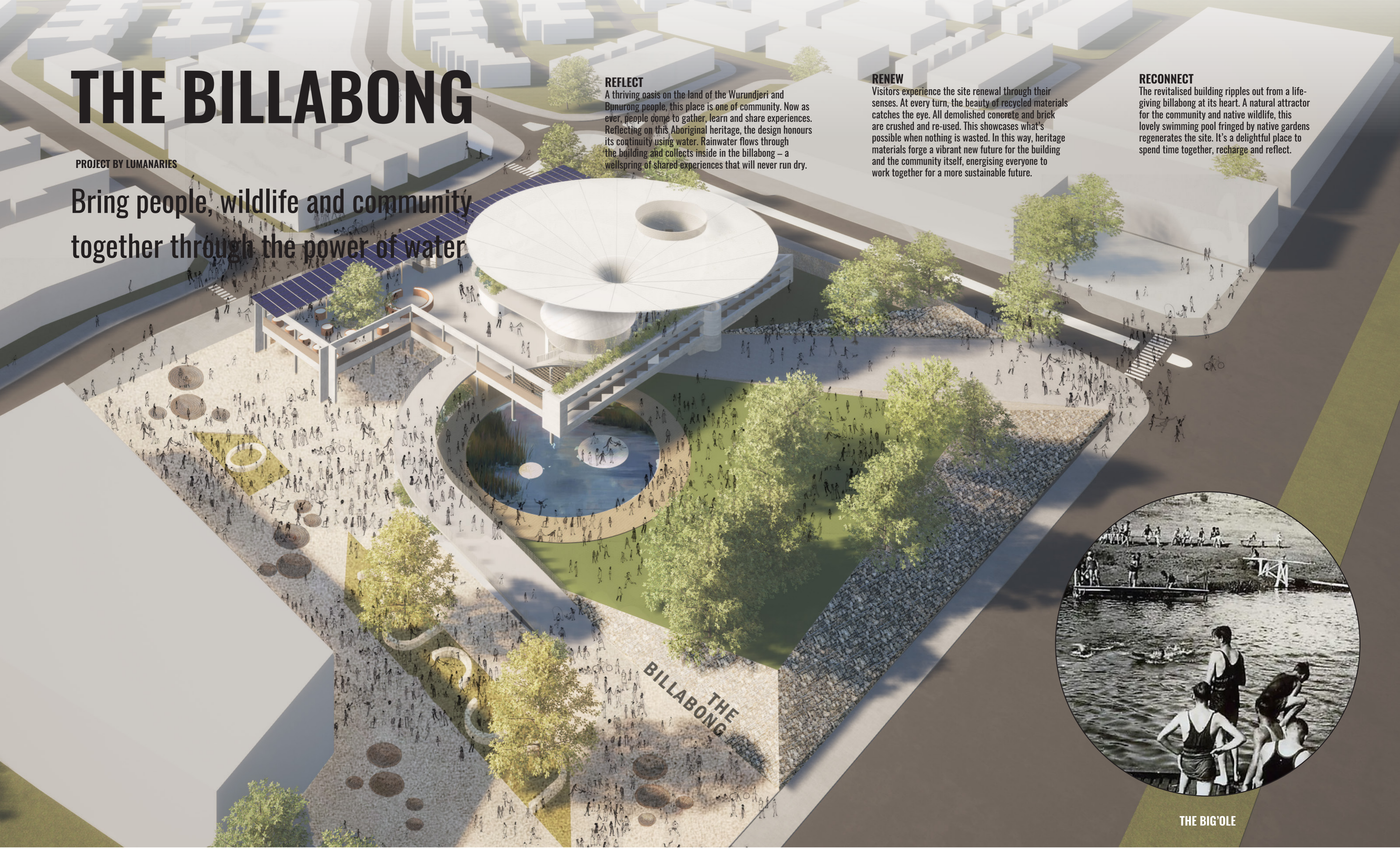
A thriving oasis on the land of the Wurundjeri and Bunurong people, this place is one of community. Now as ever, people come to gather, learn and share experiences. Reflecting on this Aboriginal heritage, the design honours its continuity using water. Rainwater flows through the building and collects inside in the billabong – a wellspring of shared experiences that will never run dry.

RENEW

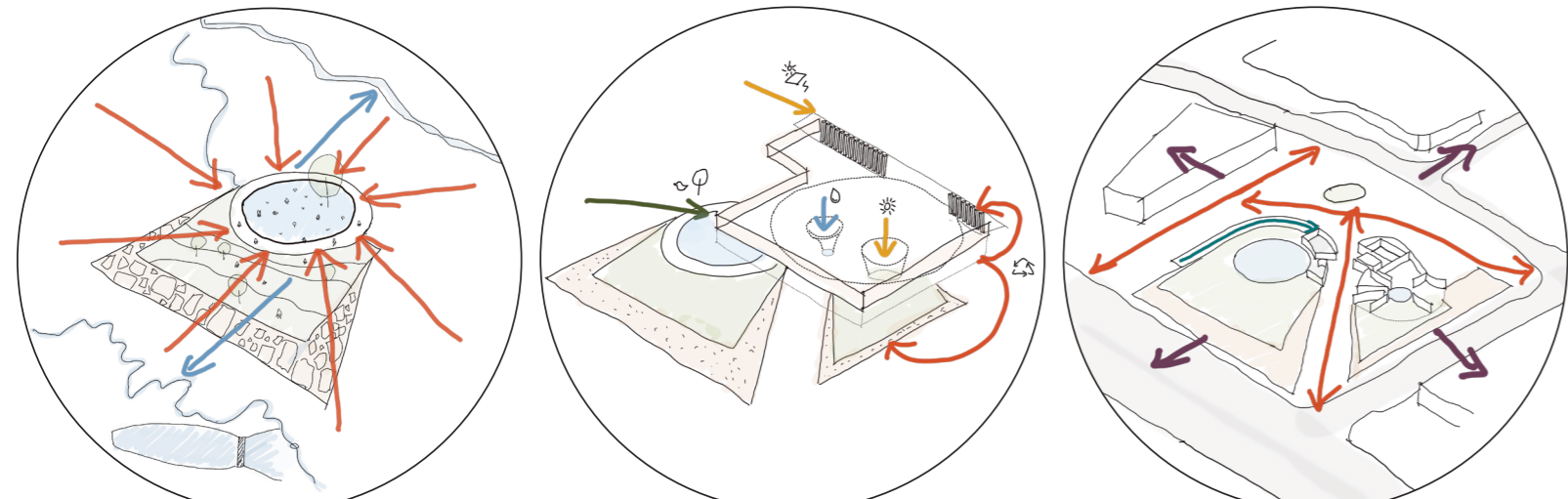
Visitors experience the site renewal through their senses. At every turn, the beauty of recycled materials catches the eye. All demolished concrete and brick are crushed and re-used. This showcases what's possible when nothing is wasted. In this way, heritage materials forge a vibrant new future for the building and the community itself, energising everyone to work together for a more sustainable future.

RECONNECT

The revitalised building ripples out from a life-giving billabong at its heart. A natural attractor for the community and native wildlife, this lovely swimming pool fringed by native gardens regenerates the site. It's a delightful place to spend time together, recharge and reflect.



THE BIG OLE



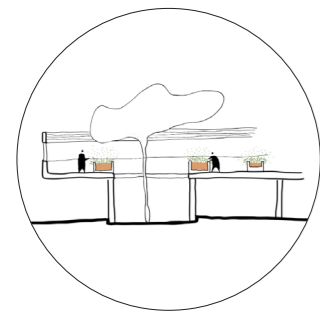
REFLECT

RENEW

RECONNECT

COMMUNITY GARDEN

Shared space for the community to garden and compost



CARGO NET

Open net on top of the pool

FUNCTION CENTRE

New mezzanine level for events

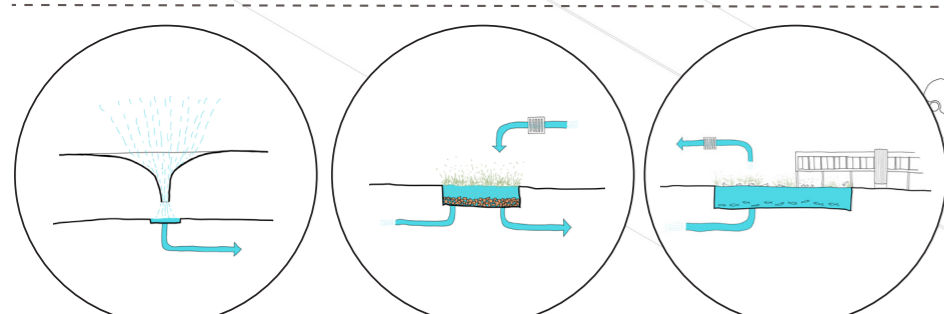
FUTURE MIXED-USE DEVELOPMENT

Open shops to serve the plaza

URBAN PLAZA

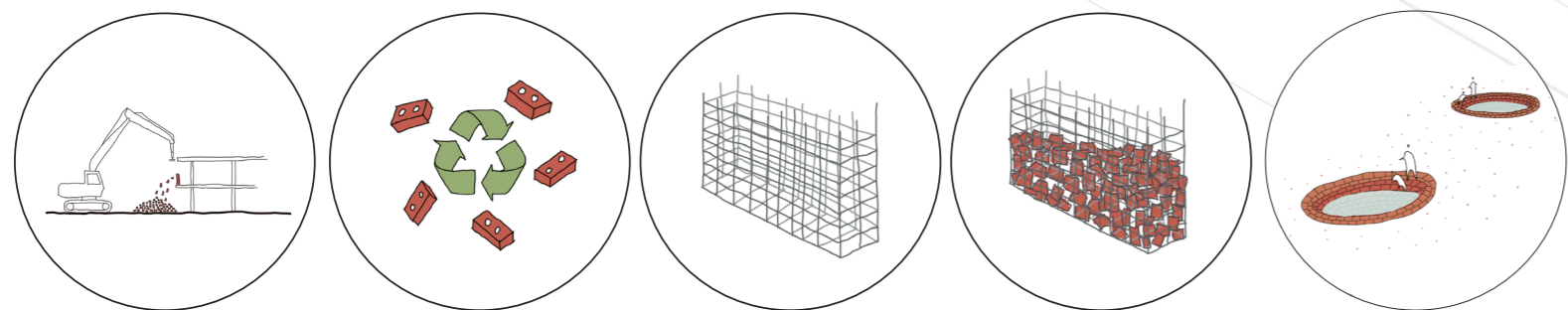
The plaza, will be dotted with ponding divots in which children can splash, these sculptural impressions tell stories of the communities past along the ground, engraved in the reclaimed bricks, now reformed into concave lenses of reflection.

NATURAL POOL



REUSED BRICKS FOR LANDSCAPING AND GABION WALLS

Crush and reuse demolished bricks for small rainwater catchment puddles in urban plaza and gabion walls



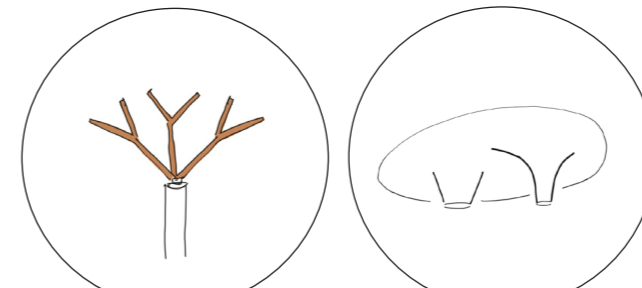
MEDIA WALL
Providing a dialogue between the water and the streetscape

TOWARDS SOLAR ENERGY PARK

FUTURE RETAIL DEVELOPMENT

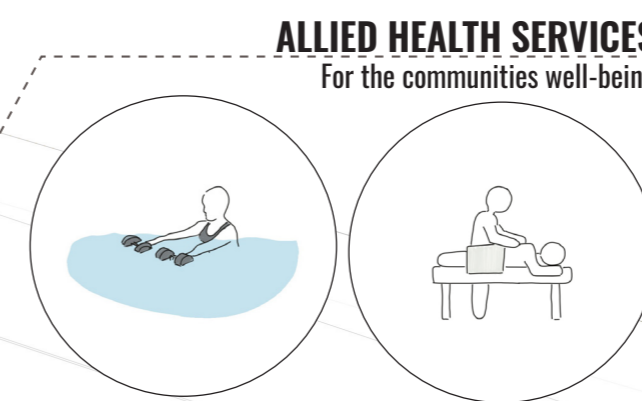
FABRIC ROOF

Organic roof over existing building shape



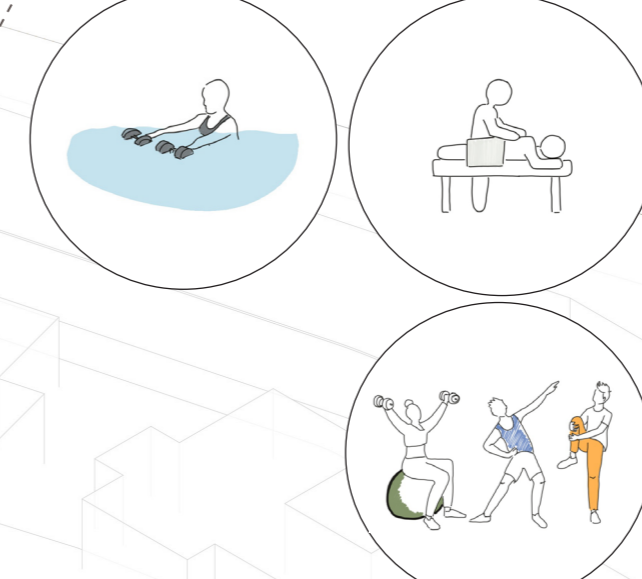
VICTORIAN TIMBER STRUCTURE

On top of existing columns to support new roof structure



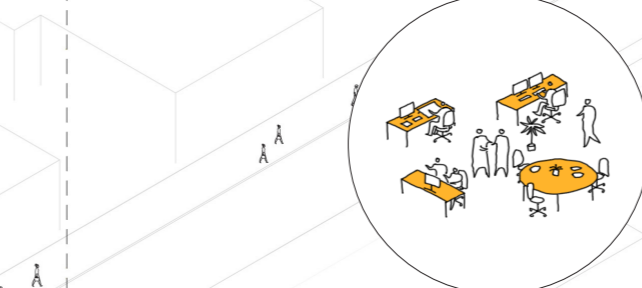
ALLIED HEALTH SERVICES

For the communities well-being



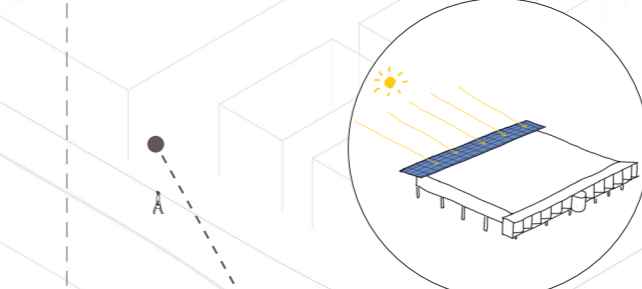
OPEN OFFICE SPACE

Flexible work space for the community



SOLAR PANEL ROOF

Northern roof consist of solar panels that shades passively while generating energy



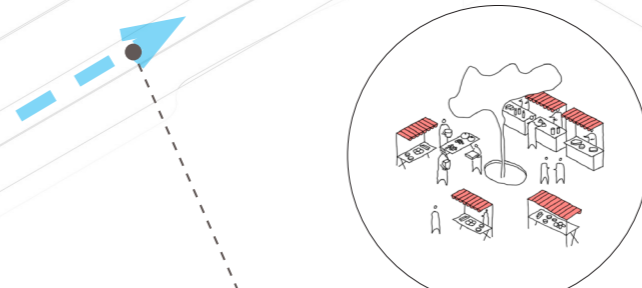
LUMA RESIDENTIAL DEVELOPMENT

RETAINED HERITAGE

in orange

MARKET SPACE

Flexible open space for local businesses and the community to gather



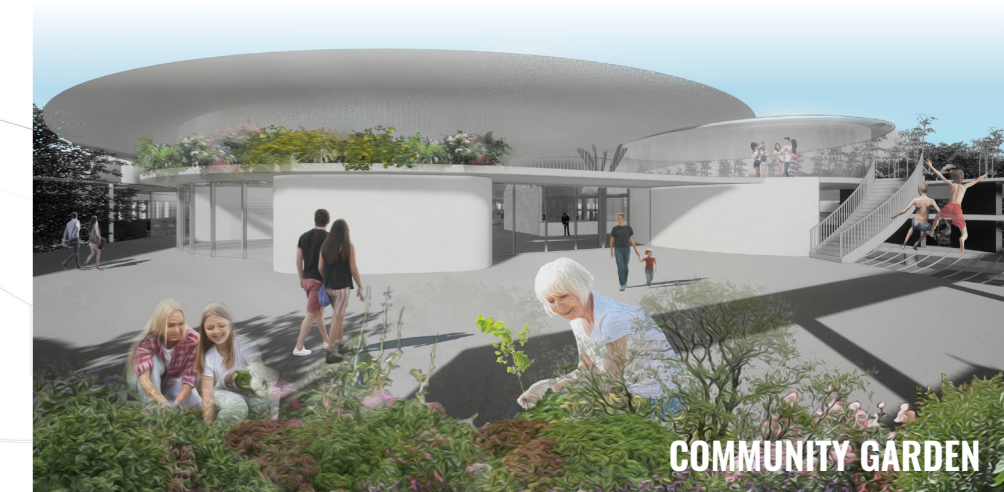
TOWARDS STONY CREEK

CHILD CARE

Happy place for children with outdoor play area



THE BILLABONG



COMMUNITY GARDEN



MARKET SPACE



WATER THROUGH LIGHTWELL



OPEN OFFICE SPACE



CARGO NET OVER NATURAL POOL