

Beyond COFFEE

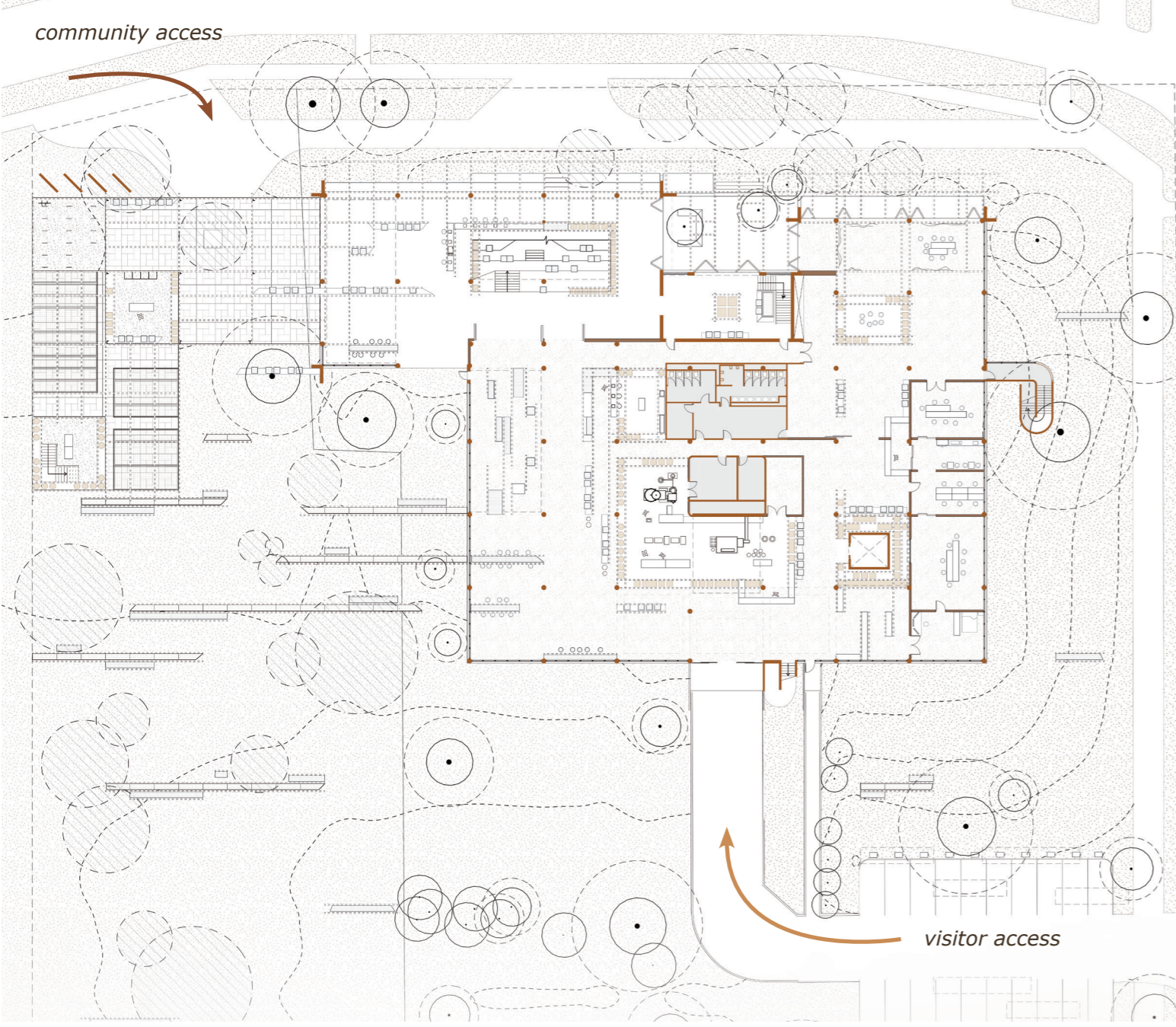
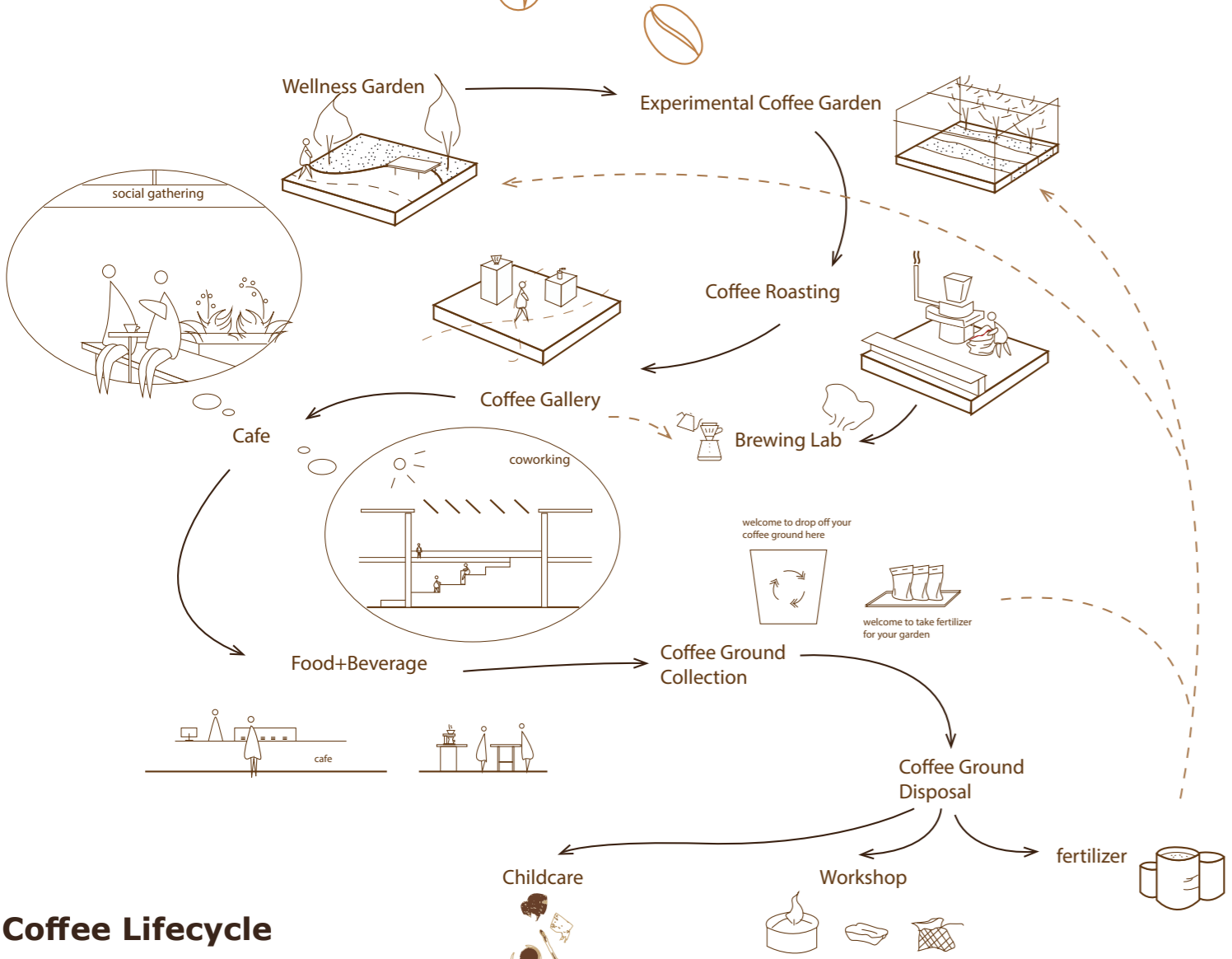
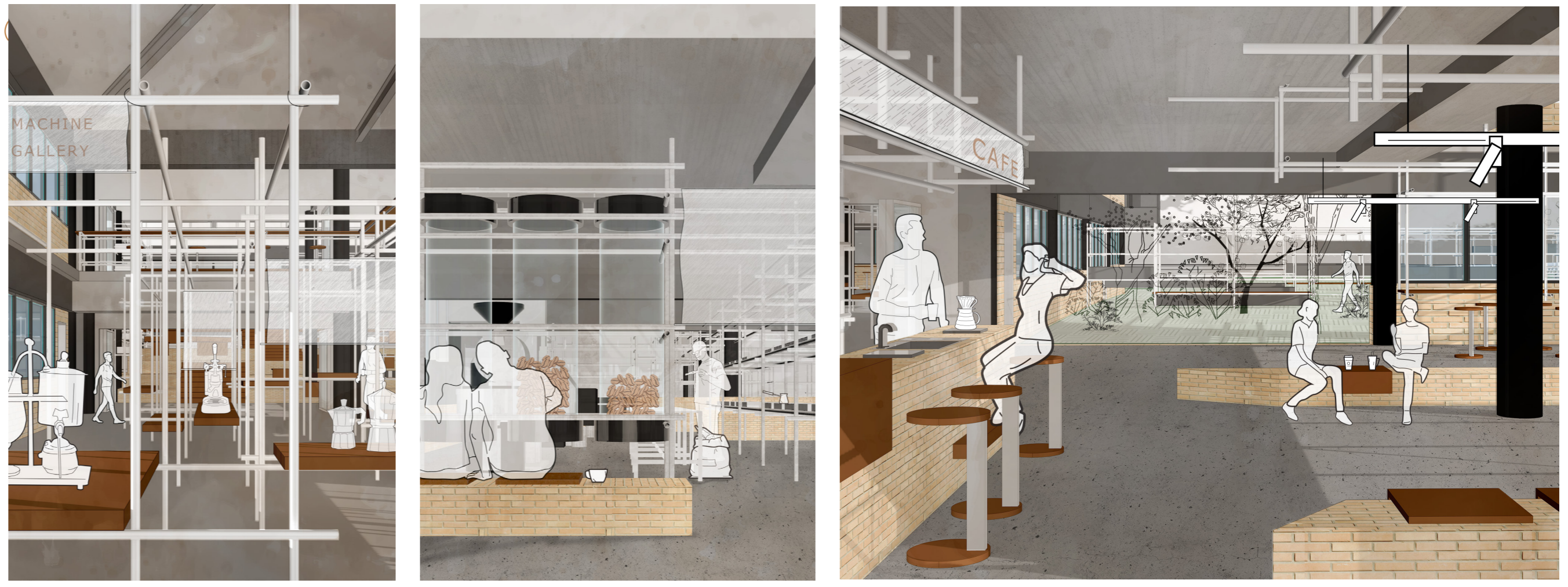
Xiyan Mao, MArch

Design Type: Community Centre
 Location: 247 St Alban Street, Sunshine North
 Heritage Building, S2, 2023

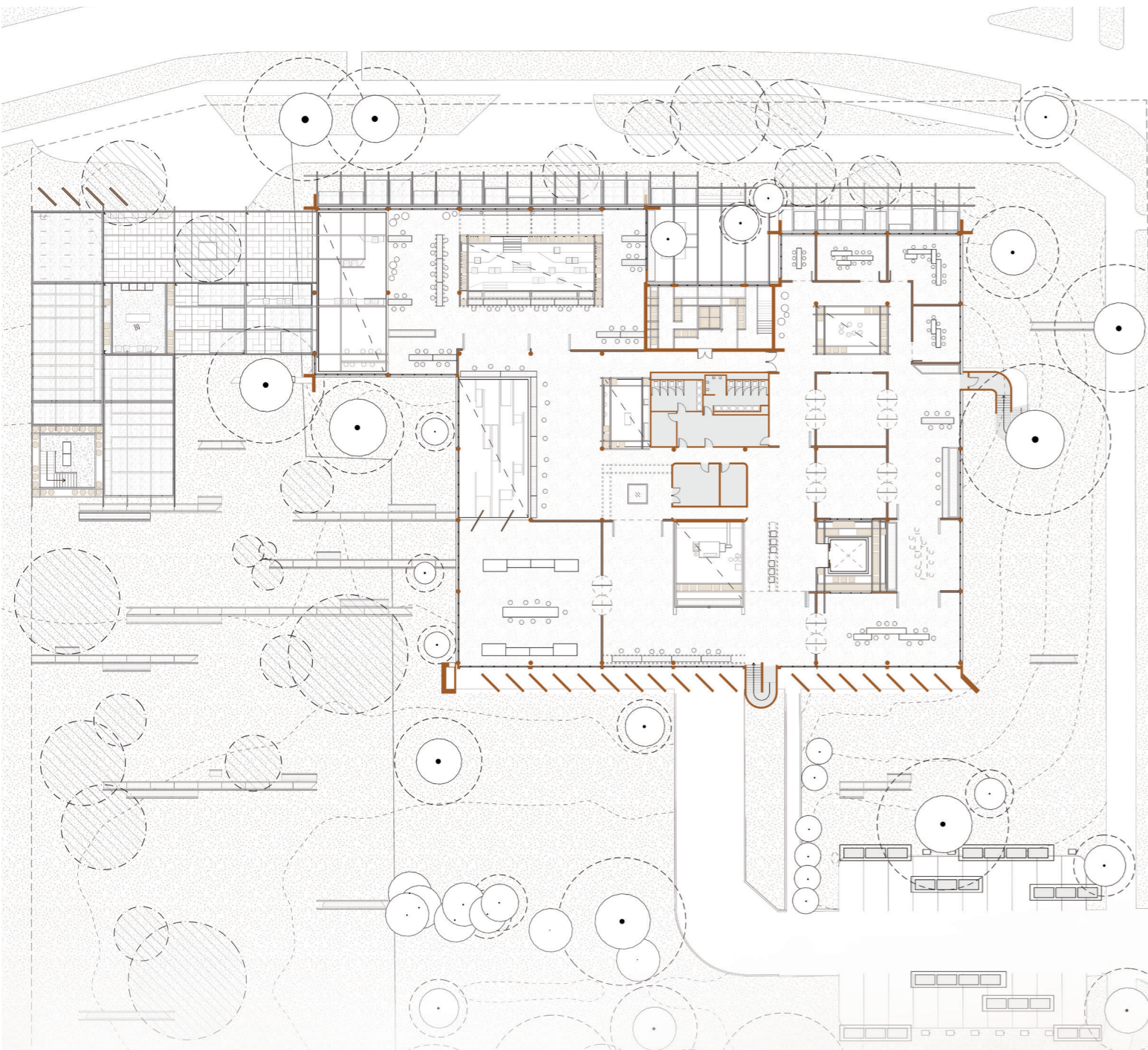
a design for social gathering with emphasis on regenerative process, the design discover the meaning of coffee as a cultural intersection

Coffee is a strong cultural icon in both Vietnamese and Australian cultures. It is also a common medium that builds networks in today's Melbourne society.

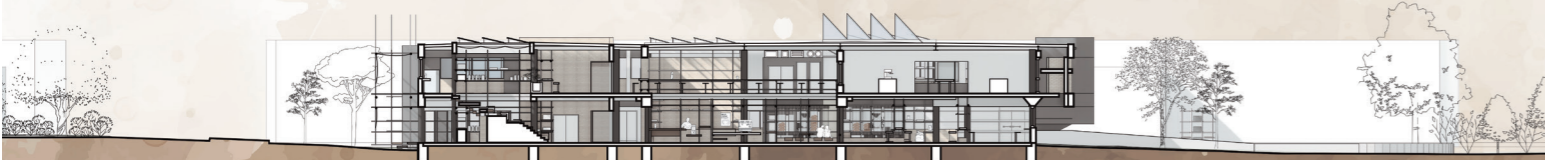
The design of the new community hub aims to express the extended story of coffee, activate communal engagement through the process of the coffee lifecycle, and socially celebrate a diverse coffee culture for a multicultural community while penetrating and influencing the broader range of surrounding suburbs and the city. The design will also focus on reflect the specific industrial history & feature of the site.



GROUND FLOOR PLAN



FIRST FLOOR PLAN



Section North-South



Elevation: Northwest