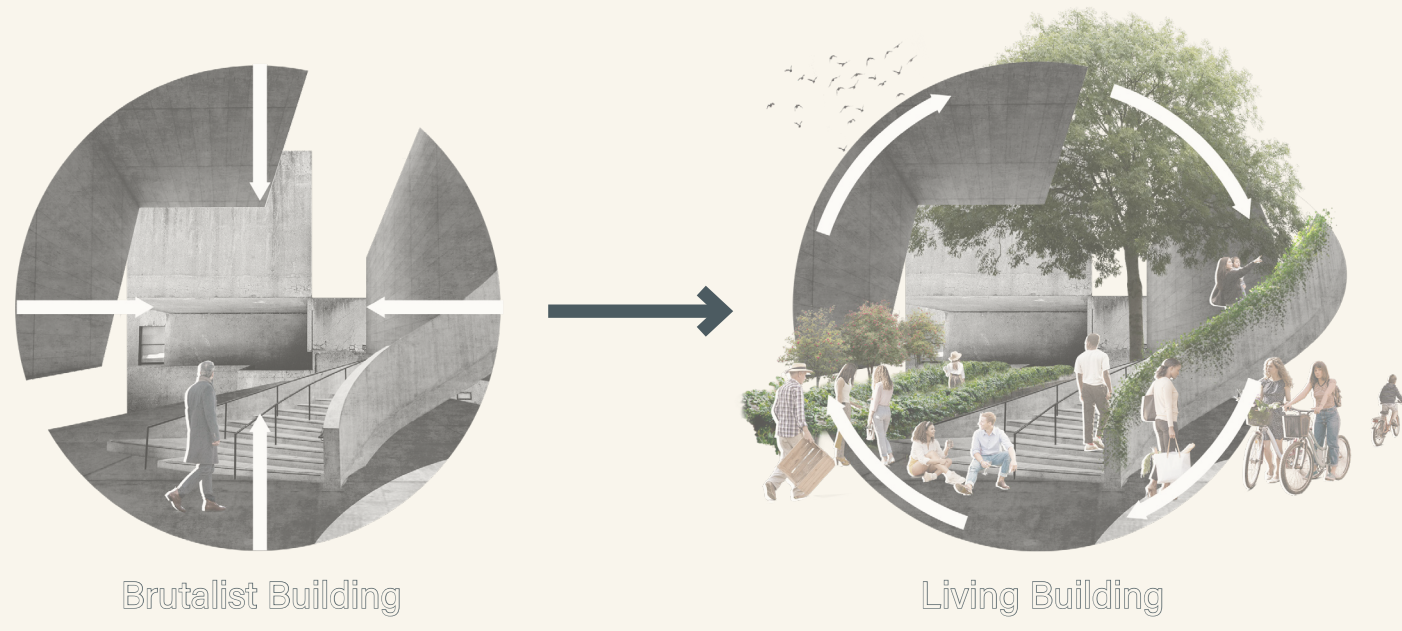


# reCONNECT

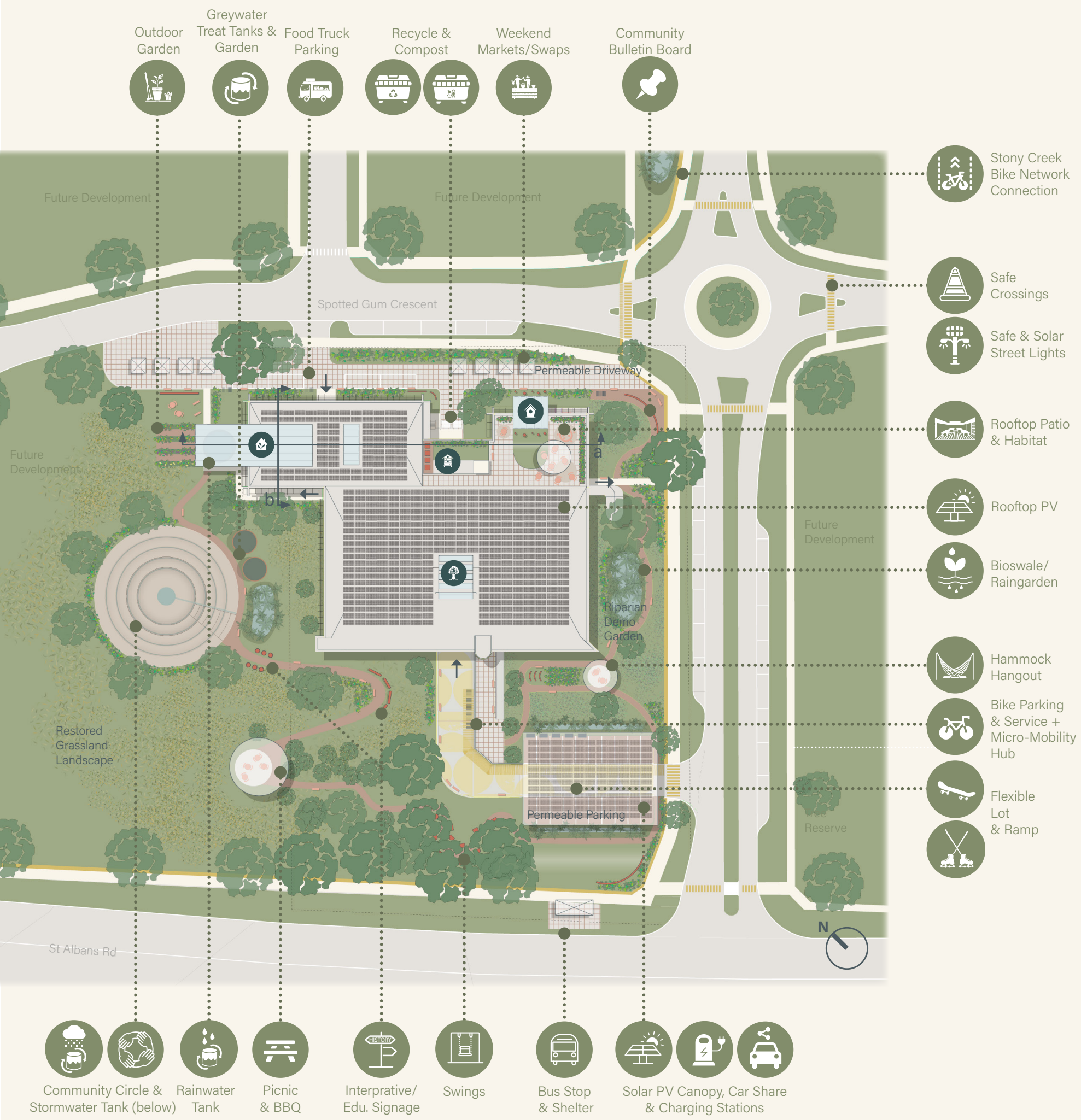


Brutalist Building

Living Building

In the heart of our visionary project, “reCONNECT,” lies the profound desire to breathe life into spaces long neglected. This endeavor, pursuing the esteemed Living Building Challenge certification, transcends the conventional boundaries of architectural innovation. The very essence of “reCONNECT” encapsulates our mission: to reunite fractured bonds between people, place, and ecology. At its core, this project is a testament to reconnection—a transformative endeavor that heralds a departure from the rigid confines of brutalist architecture. Unlike its predecessors, often inward-focused and detached from the natural world, “reCONNECT” emerges as a living, breathing entity, fostering not just structures but profound relationships. Our adaptive reuse of the existing brutalist building into a vibrant community center symbolizes a departure from the object-oriented ethos. Instead, it embraces the ethos of impact, prioritizing occupant health and well-being, and seamlessly intertwining with the surrounding environment.

The landscape upon which “reCONNECT” stands bears the scars of centuries-long disconnection—roads severed, demographics shifted, and land uses altered. Over the span of two centuries, this once harmonious locale has been dissected, creating barriers for diverse animal species and diminishing the vitality of the ecosystem. However, “reCONNECT” stands as a beacon of change, challenging these entrenched divisions. Our mission is to dismantle these barriers, not just in the physical sense but on a profound ecological level. Through thoughtful design and meticulous planning, we are weaving together threads of connection: people to their environment, individuals to one another, communities to their history, and the natural surroundings to each other. The project seeks not only to revitalize the ecosystem but also to rekindle the bonds severed by time, transforming disconnection into harmonious coexistence.



- Community Circle & Stormwater Tank (below)
- Rainwater Tank
- Picnic & BBQ
- Interpretive/Edu. Signage
- Swings
- Bus Stop & Shelter
- Solar PV Canopy, Car Share & Charging Stations

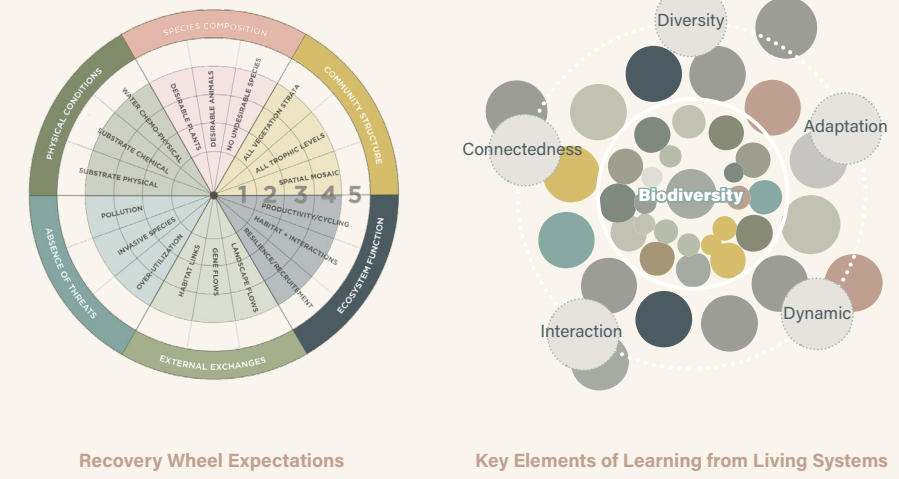


## Bee Hive

Bees play a critical role in maintaining ecosystem health. Since interacting directly with these little buzzers can be dangerous, an immersive experience has been designed into the centre. Occupants are encouraged to “take a break”, enter this space, put on a VR Headset to observe live footage of the apiary located above on the roof while buzzing sounds play in the background. This space is also the location of an Active Botanical Bio-filtration wall, which provides visitors with a breath of fresh air.

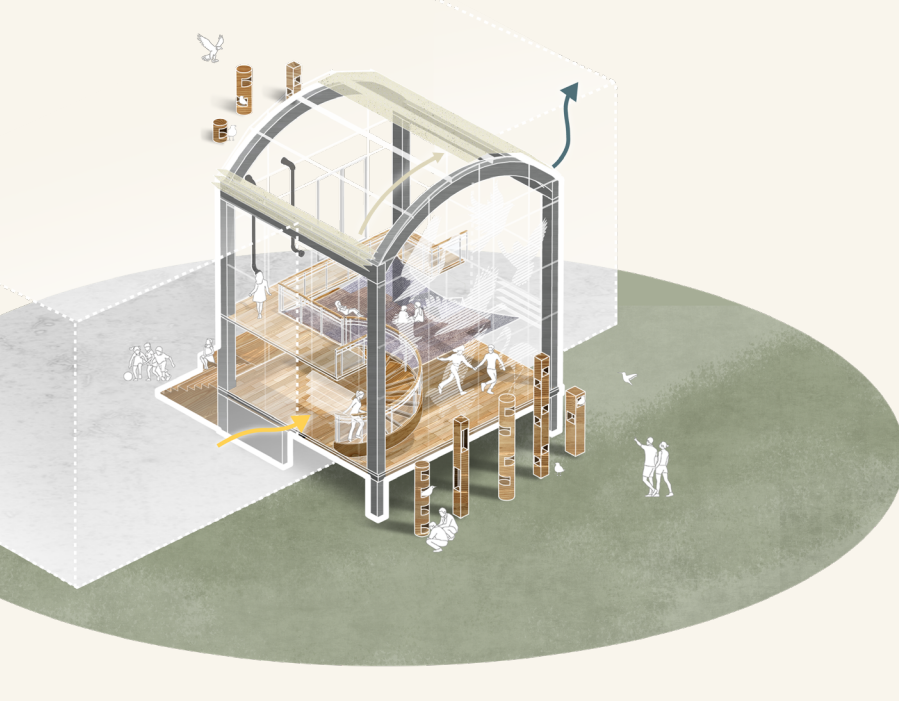


“An ecosystem is a geographic area where plants, animals, and other organisms, as well as weather and landscapes, work together to form a bubble of life.” -National Geographic



## Bird House

This space provides kids and adults alike the opportunity to “fly” with the birds. Elevated above ground level, the two-story space is furnished with a large “hammock”. Users can look through their binoculars to the bird house poles outside or catch a periscope to the bird houses located on the roof. The safety of the critters is of utmost importance, therefore a frit pattern is applied to the entirety of the glazing outside. Operable windows allow for cross ventilation through the space and an automatic roof shade helps to protect occupant comfort inside.



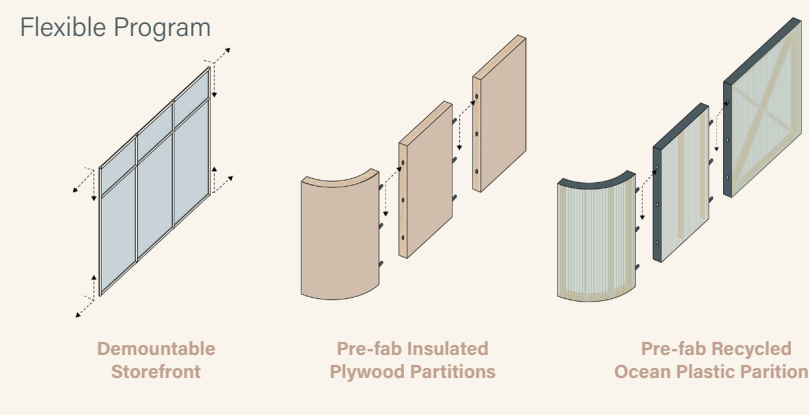
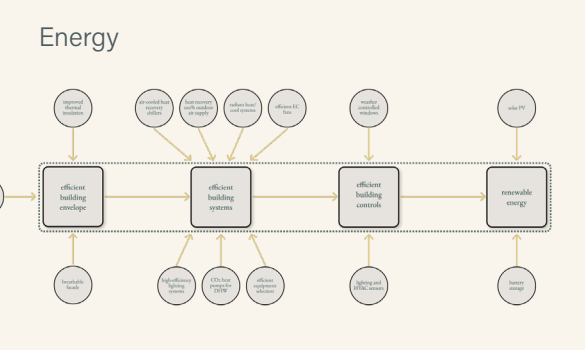
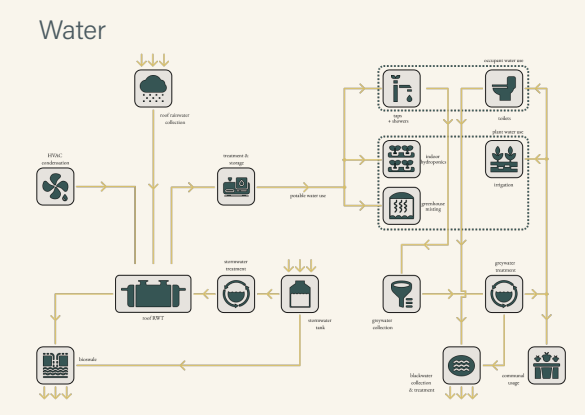
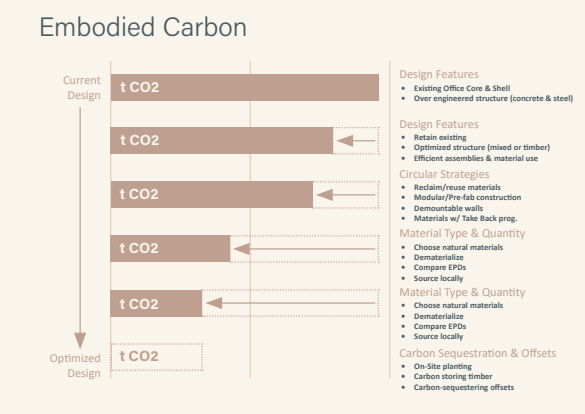
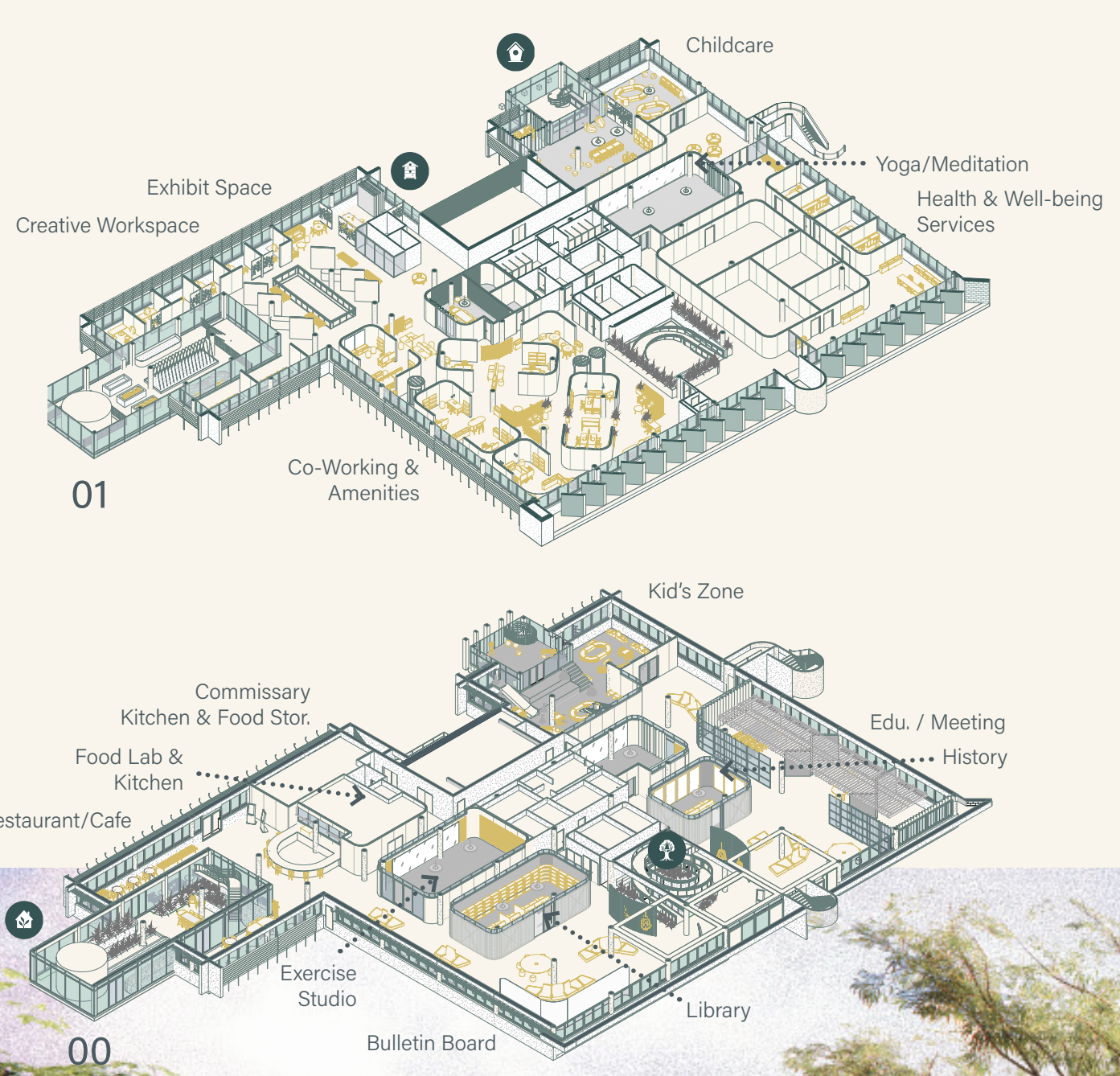
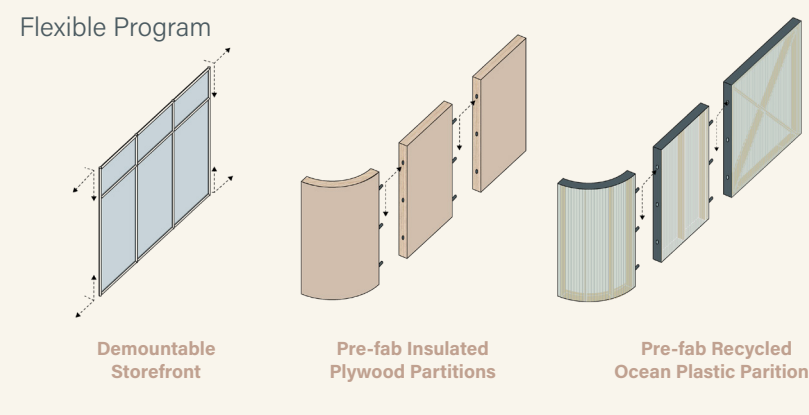
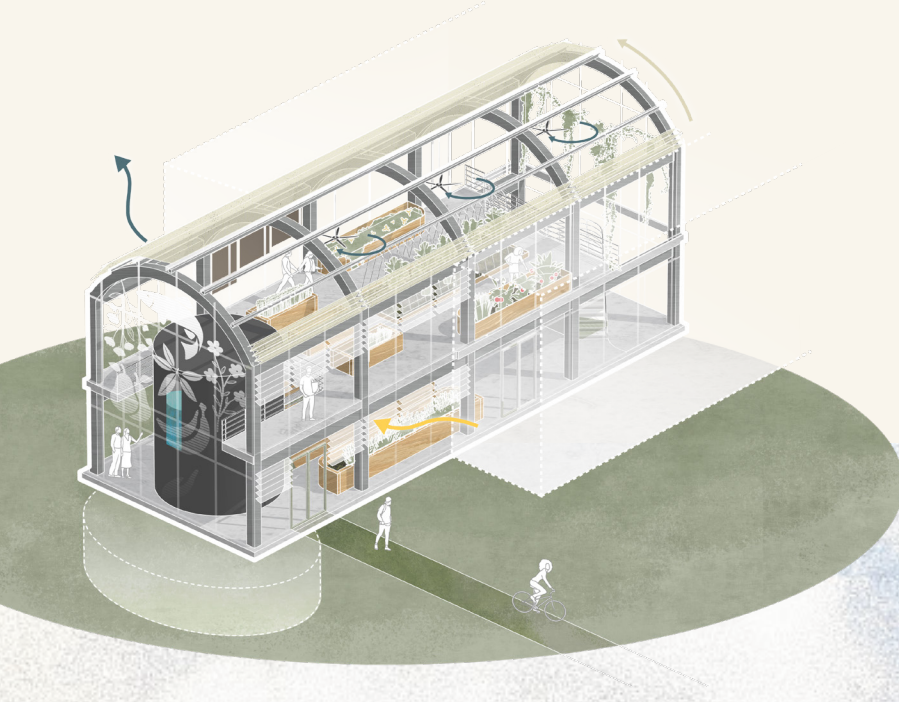
## Tree House

A tree is acknowledged as a symbol of growth, wisdom, connection and transformation, therefore centering one in this new program, within the existing atrium, symbolizes a new life and opportunity to learn. Swings hang from either side to encourage pause and reflection. A central spiral ramp contrastingly encourages movement and observation in a playful way, tipping our hat to the experience of playing in a treehouse as a kid. This is the perfect welcoming moment for a new Living Building.



## GreenHouse

This addition seeks to serve multiple purposes; it improves IEQ, provides optimal year-round conditions for growing fresh produce, which can be used by community members and the attached restaurant/cafe. It acts as an educational tool that connects people with natural spaces, brings awareness to water, a precious resource, inspires artists and makers, and serves as an area of respite. Operable windows and fans circulate fresh air through the space and an automatic roof shade helps to regulate daylight levels. Bird-safe frit patterning, indicative of the space’s function covers the exterior glass facade.



The circle, with its timeless and boundless shape, holds profound symbolism that transcends cultural and historical boundaries. It epitomizes unity, representing the concept of oneness and wholeness. The absence of corners or edges signifies inclusivity, implying that everyone is equal and interconnected. In this infinite loop, there is no beginning or end, underscoring the eternal nature of relationships and connections. Its significance lies in the reminder that we are all part of a larger whole, encouraging empathy, cooperation, and the celebration of our shared humanity.

