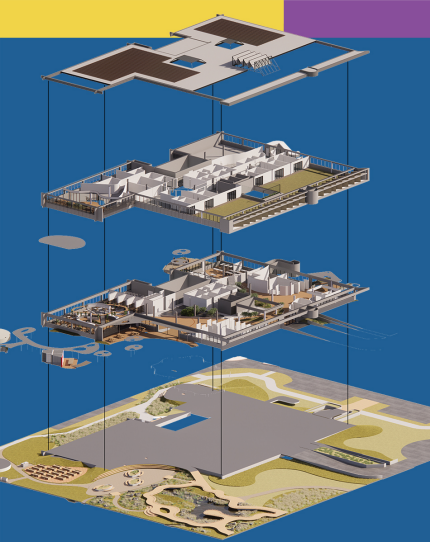


ANIMA

We acknowledge the Traditional Custodians of the land on which Anima is located, the Wurundjeri Woi Wurrung people of the Kulin Nation, and pay our respects to their Elders past, present and emerging. We recognise the diversity of Aboriginal and Torres Strait Islander Peoples who contribute to our community and pay our respect to the wisdom of Elders, past, present and emerging.

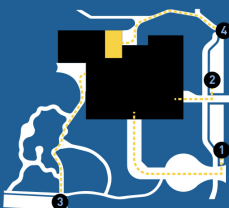
We also recognise the need for Second Peoples to develop a new relationship with place and learn from First Peoples' knowledge to help the community build a sense of responsibility and connection. We encourage Second Peoples to become naturalised to place and own the responsibility to listen and take care of the land as it cares for us.



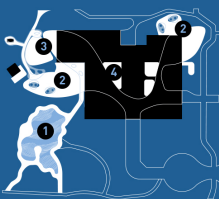
Anima Ground Floor Plan



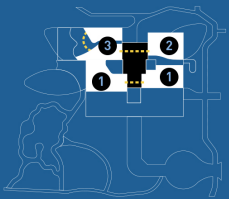
"To celebrate this striking building in a way that brings life to its soul and celebrates the water story that has flowed through this place over time - breathing life back into the rich biodiverse grasslands, local food systems and community enterprises so that a new model for regeneration unfolds."



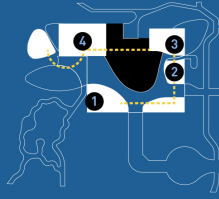
- 1 Primary arrival by foot on heritage ramp, after parking in the eastern bays. This route leads to the atrium and rain gardens
- 2 Secondary entry from the eastern bay carpark directly linking to the maker space and market stalls
- 3 Meandering arrival through the revitalised wetlands and grassland plains
- 4 Arrival by bicycle to storage and end of trip facilities



- 1 Ephemeral wetland
- 2 Children's play and flexible community gathering space
- 3 Urban agriculture and educational space
- 4 Rain gardens surround entry/foyer space, enhancing the biophilic connections within the architecture



- 1 The childcare is nestled on the first floor and connects to a rooftop garden created by peeling back the building envelope, like the petals of a flower
- 2 Family health services are accessible from the ground floor via the internal rain garden or external stairs, constantly connecting with the natural ecosystems that surround Anima
- 3 Coworking spaces overlook the community kitchen and community produce gardens



- 1 Spaces which celebrate productive output from the community are given prominence in a hierarchy of circulation that begins with the gallery space
- 2 A market hall acts as a buffer space between public circulation and community maker spaces
- 3 Flexible maker spaces are nestled in the back of the building
- 4 A community kitchen is close by with an immediate connection to the fresh produce grown both inside and outside of the walls of the building

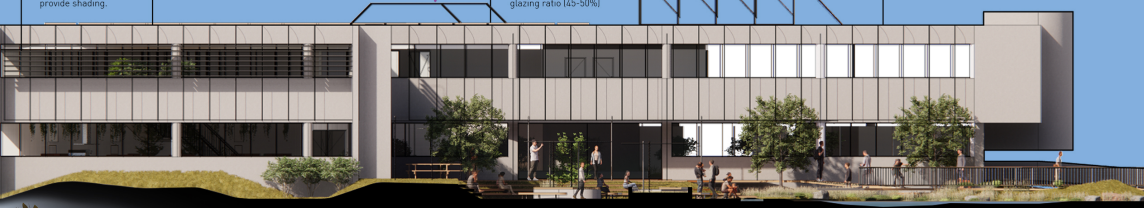
"It's hard to explain and I might sound a bit crazy, but the air in this place feels so fresh and its quiet... a mate of mine said it was to do with the ventilation system and the sealing of the building"

Optimised number, spacing, depth and angle of fins to provide shading.

Mechanically Ventilated system that provides continuous fresh air (potentially with heat recovery).

Balance between daylight penetration and heat loss/gain with optimised glazing ratio (45-50%)

Building envelope with thermal breaks and increased insulation thickness (potentially airtightness membrane).



"Hey - did you notice the energy display on your way in? We are generating much more power than we are using today..."

"Remember when the fires raged across Victoria? Knowing that our kids were here and they were safe from the smoky air outside was so reassuring. We spent a lot of time in the community hub over that month - such a refuge for us."



Our design process stepped back to view the wider landscape and how our hero ecosystems are connected in space.

As the site heals, Anima becomes an important stepping stone for restoring nature at a wider scale.

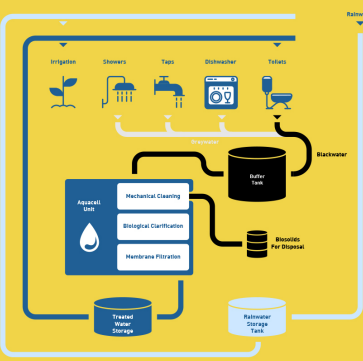


- EPHEMERAL WETLAND
- GRASSLAND PLAINS
- FLOWERING MIDSTORY
- URBAN AGRICULTURE

When following the species walk, people use the Anima app to uncover the different biodiversity friendly design features of the site and how they can be adapted for use in their own homes and gardens. Instructions for building bee and frog hotels and plant species lists can be downloaded. The app will link to existing local opportunities, like the Grassland Starter Kits from Brimbank City Council and ways to contact Friends of Framoo.

Water is central to Anima's history...

A vital life source and nourishing natural healer, water flows through our community, nourishing living ecosystems, communities and fauna. A never-ending cycle, descending from the sky to the earth, only to rise again, water centres, relaxes and revitalises us.

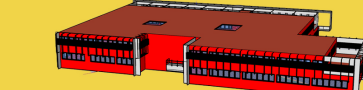


Like the flora in the landscape, we fulfill our energy needs from the sun.

The all-electric Anima building includes 120kW of photovoltaic panels on the roofs, battery storage system, and energy monitoring via a web-based portal to achieve an energy positive outcome.

Establishing performance strategies and benchmarking EUI are a key consideration for us. The design principles are Passivhaus aligned, with thoughtful consideration around insulation, thermally-broken details, improved airtightness, heat recovery and continuous ventilation strategies.

Optimised window-to-wall ratio and shading strategy has also been adapted, to balance the passive solar heat gain during winter, minimization of overheating risks in the summer and daylight penetration.



Material Sourcing	30 Products
Declared Certified	90%
Red List Free	90%
FSC Certified Wood	82%
Material Sourcing	20% <2000km 30% <5000km 25% <1000km 25% Remainder