

RE-PLACE

Open Atrium Area with Stair



'Re-Place' uses the former MMBW building as an opportunity to transform an existing building into a vibrant community hub that addresses the LBC principles. The design of the building splits the existing area into two distinct spaces, connected by a central foyer and amenities core.

In the right half, the fabric of the existing building has been kept completely intact, with more private programs in place. In the left half, the fabric of the existing building peels away to create more public and open spaces, using the angles of the existing louvres to inspire a geometry that skews and twists the original envelope of the building.

In the north-east corner of the building, the original façade has been completely removed, leaving only the concrete beams and columns of the existing building, in between which new lightweight structures have been erected. As visitors explore this open area of the building, old and new intersect in surprising and unexpected ways. The existing concrete beams and concrete columns sit between new café seating and rain garden areas, creating a potential new community hub in the heart of Sunshine.

Perspective Section



Stage 1



Stage 2



Stage 3



Stage 4



'Re-Place' proposes an affordable solution to transforming the former MMBW site into a vibrant community hub through a staged approach. Each stage can be completed before funding is secured for the later stages.

By using this staged approach, the project is able to test out various programs and solutions before spending a large amount of money on a permanent, fixed and final solution that may not work. This approach allows a staged output of money into the project, while also giving project groups the chance to test solutions before final implementation.

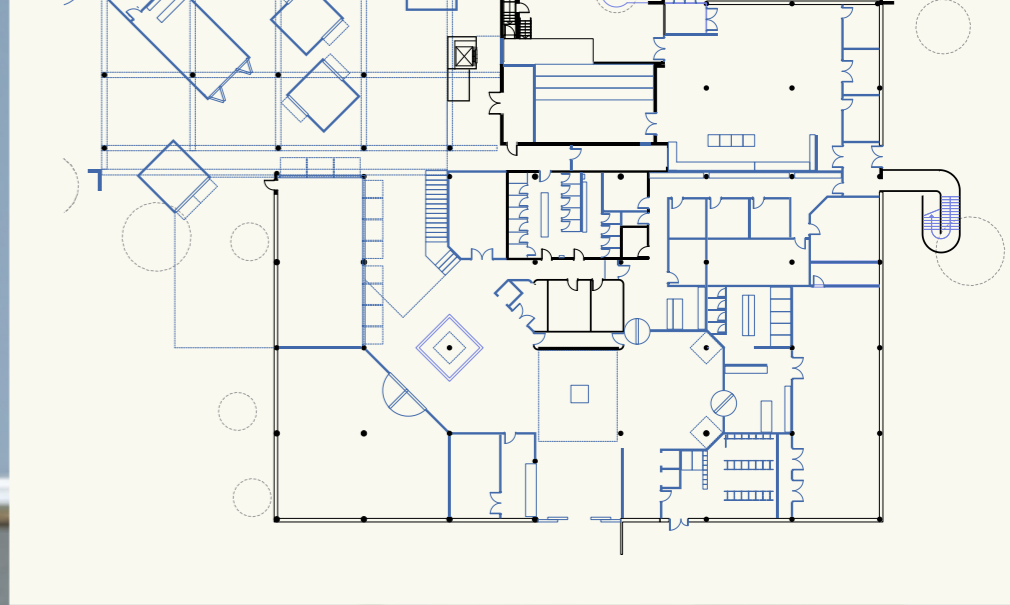
Open Air Area with Cafe



Entry & Reception with Local Artist Installation



Proposed Plan



Proposed Elevation

