



**LIVING FUTURE**  
INSTITUTE<sup>SM</sup>  
AUSTRALIA

2023

# **ANNUAL REPORT**







The Living Future Institute of Australia acknowledges the Traditional Custodians of the Country throughout Australia on which we live, learn, and work, and recognise their continuing connection to land, waters, and culture.

We pay our respects to them and to their Elders past, present and emerging.



## **VANESSA TROWELL**

CHAIR OF THE BOARD

Writing this letter to you requires sitting with and reflecting on the big realities of 2023. Of climate breakdown, of the Referendum defeat, of distressing geopolitical conflict. Yet alongside these big realities, 2023 was also a year of the LFIA delivering great things through our focused ambition and action towards a future that is socially just, culturally rich and ecologically restorative.

This year, a foundation of our path towards a unified future was established by events, including the inaugural Biophilic Design Awards, the ILLUMANATE Living Building Challenge® Design Competition in partnership with Development Victoria, Symposium 2023, participating in Living Future 23: Advocacy + Belonging, and proud support for constitutional recognition of Indigenous Australians and the Voice. We have reached 118 Declare labels and expanded the Living Future Accreditation program's impact in implementing the principles of the Living Building Challenge® with 26 graduates.

Alignment to, and the stewardship of, the LFIA mission is clear and owned across the Board, team, and committees. We have consolidated our foundations, managing our resources prudently, whilst diversifying our income streams for sustainable growth and enduring impact. We have expanded networks across the sector, with the scale and skill of an ever-wider circle of regenerative design stakeholders, partners, peak bodies, and practitioners matching the growing momentum across the built environment sector.

The forward strategic planning and roadmap from the Board set clear direction to build on 2023, with an increased focus on education and advisory. We are well positioned to grow our impact across each of our key programs by the end of 2026. To the Board, many thanks for being strategic thought partners and generative visionaries, modelling that commitment starts with accountability.

The Technical Working Group and the Biophilic Design Initiative are a crucial and strategic element of our capability, planning and

increased organisational maturity. Systemic co-operation with allied peak bodies, including the Green Building Council of Australia, ASBEC, Passivhaus and IWBI, is having demonstrable impact on uptake of regenerative design through standards, policy, and projects.

To our CEO, Laura Hamilton-O'Hara and Technical Officer, Nicola Smith, your tireless, inspiring, nimble work is seemingly boundless. We farewelled Alegria Alano to pursue her passion for conservation and thank her deeply for her generous impact to the LFIA, and we warmly welcome Cait Scullin to the team as Communications and Community Officer.

We must be ever cognisant of the immediate consequences and lasting implications of our choices and actions. Leaving things better than we found them is more than an ambition but an action that we can all choose to take. Our built environment can and must manifest positive social and environmental value. The Living Future community continues to demonstrate transforming ambition into action, with clarity of strategic purpose and reciprocal stewardship. Demonstrating what good looks like permeates through our purpose, our people and our programs.

We can't look away from what is daunting, yet looking together helps unite us in collective stewardship and transformative action. We are so grateful to have you with us on this vital journey towards a regenerative future.

With gratitude and purpose,  
Vanessa

# 2023 GRATITUDE GALLERY

LAURA HAMILTON-O'HARA CEO



## Living Future 23, Washington DC, May

After four years, it was absolutely magical to attend LF23 with Peri Macdonald and Paolo Bevilacqua in Washington DC. Inspiring talks, wonderful project case studies, but best of all was spending time with the ILFI team who made us feel so welcome.



## The Inaugural National Biophilic Design Awards, April

When the Biophilic Design Initiative (BDI) at LFIA was launched six years ago, one of its goals was to recognise excellence in Biophilic Design. This year we finally took big steps towards that, as we held the first Biophilic Design Awards. Congratulations to the inaugural winners and the BDI for pulling it together, especially Graham Charcroft for his beautiful trophies and Cox Architects for hosting the event.



## Board and Team Dinner, August

Our incredible, generous Board is the backbone of this organisation. Thank you for supporting and encouraging us to strive for more impact. This dinner was also a farewell celebration for Alegria Alano, whose positive, curious mind and kind spirit will be missed in the LFIA team. Thank goodness she is still a real person in the world and coffee is still an option.



## LFIA Team Symposium 2023, November

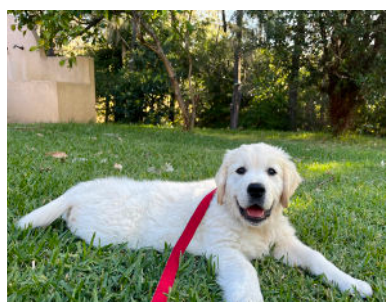
The people I get to work with day to day are what makes the work shine. Thank you so much to Nicola Smith for cheerfully and skillfully navigating such a multitude of tasks and for driving Declare from strength to strength, complemented beautifully by Fiona Caulfield in NZ. Welcome to Cait Scullin, who joined us this year in the Comms and Community Role and is clearly an absolute star, quickly learning the ropes. Sarah Ladyman, the amazing Symposium Coordinator, continues to create magic that is palpable by all who attend. Sara Rickards, thanks for supporting us all when we need it most. Huge thanks to Stephen Choi, for his generous knowledge sharing, candid advice and can-do approach. Sam McGavock joined us this year to co-facilitate the LFA and she was brilliant and will hopefully be involved in more things in 2024.



HOW MUCH DO I VALUE YOUR SUPPORT? THIS MUCH!

## Sponsors and Partners

Thank you to our incredible Strategic Partners, GH Commercial, Vicinity Centres, ADP Consulting, Bluescope Steel, NH Architecture and Frasers Property Australia, for supporting our work throughout the year and doing brilliant work in your own right. Thank you to Bluescope, Capral, Earp Brothers, WW+P and Armadillo for making Symposium possible. Thanks to GH Commercial and Studio THI for enabling us to launch the Inaugural Biophilic Design Awards.



## To All Those That Support Us

A shout-out to those closest to us. In the tapestry of life, these support systems are the threads that keep us together. Be they two-legged or four, they make the journey a little lighter, and we're endlessly thankful for your presence, comfort, and support!





LFIA is an Affiliate of the International Living Future Institute (ILFI). Their camaraderie, advice, inspiration and support make all things possible and we are so grateful. We are proud to connect the Australian built environment industry with ILFI programs and our shared mission of a future that is socially just, culturally rich and ecologically restorative.

*"I am thrilled to celebrate the remarkable achievements of the Living Future Institute Australia over this past year. The National Biophilic Design Awards highlighted stunning examples of biophilic spaces across all kinds of scales and purposes. The launch of ILLUMANATE LBC Design Competition pushed designers to redefine what is possible with adaptive reuse. The Symposium was filled with inspiring and motivating stories, fostering collaboration and learning across so many incredible minds. All of this on top of the ongoing growth of the Living Future Institute Australia community. It is an honor to partner with the LFIA team in our work to accelerate the global transformation towards a regenerative future and I look forward to seeing what they achieve next."*

**Lindsay Baker**  
CEO, International Living Future Institute



# STRATEGIC PARTNERS

The Living Future Institute of Australia partnered with the following organisations in 2023 - our work would not be possible without their support. Each organisation is delivering positive change in their own right and taking action to create a Living Future®. We are proud to share their highlights.



## **Believe in Better**

### *Our approach to sustainable business*

As the Oceanic subsidiary of Mohawk Industries, the world's largest flooring company, we belong to a global network of leading products, brands and world-class manufacturing and we know that our future depends on the work we do today.

For us at GH Commercial, we have a lot to celebrate, having been the first Australian carpet manufacturing company to achieve carbon-neutral organisational status in both Australia and New Zealand. We are also committed to reducing our greenhouse gas emissions through energy efficiency projects and the use of renewable power sources like solar.

Our connection to community continues to play a pivotal role through our local and national initiatives. In pursuit of celebrating artists with disabilities in the Oceanic region, our new Social Canvas Collection is proud to support genU's Arts Programme by providing an annual donation.

## **GH Commercial Team**





Having a sustainable business is critical to delivering long term value, and our purposeful ESG program is a core component of how we enable good business. From an environmental perspective, we remain on track to achieve Net Zero for our Scope 1 and Scope 2 emissions for common mall areas across our wholly-owned retail assets by 2030, having reduced our energy intensity by 26% and carbon intensity by 41% since FY16. Our assets are seen as an integral part of the community in which they serve.

**Peter Huddle, CEO & Managing Director, Vicinity Centres**







ADP prides itself in being a sustainability led engineering firm that recognises the transformational thinking required to be responsive to the new paradigm we are finding ourselves in.

There has been an evolution of sustainable thinking, moving beyond the traditional Triple Bottom Line, and traditional ESD solutions to a much more holistic way of thinking, and the Living Building Challenge® has captured this evolution very succinctly in its framework and flower analogy.

ADP uses the LBC Petals as a platform to advocate for change in the market to help foster more human and environmental wellbeing that can co-exist in harmony. We use them to incite aspiration and engagement to help broaden and develop an understanding of those broader elements of sustainability within the built environment.

Further, through engagement with Traditional Owners and Indigenous Design Consultants, ADP are on a journey to begin all projects through the lens of not just an acknowledgement of Country but to attempt to apply Indigenous Design Principles that weave a narrative in response to and a renewed respect for nature.

### **ADP Consulting Team**



This year BlueScope achieved its second ResponsibleSteel™ certification for its Western Port site in Victoria, Australia. BlueScope's first certification was obtained by the company's Port Kembla Steelworks in February 2022.

Western Port is part of a fully integrated steel supply chain with hot rolled coil sourced from BlueScope's Port Kembla Steelworks. The site has committed to a 30% reduction in emissions intensity by 2030 and has worked diligently to minimise its impact on the surrounding environment.

"BlueScope is proud to achieve ResponsibleSteel™ site certification for Western Port. The certification reflects the outstanding efforts of our Western Port team, the quality of our operations, and provides our customers, shareholders, and communities with the confidence that BlueScope's Western Port Works meets the very high environmental, social and governance performance standards required by ResponsibleSteel™ site certification. Through the audit process across all 12 sustainability principles, our approach to engaging with our communities, as well as our safety, supply chain, and human resource systems, were highlighted as areas of particularly high performance."

**Tania Archibald, Chief Executive, Australian Steel Products, BlueScope Steel**





Next year, Frasers Property Australia marks 100 years of creating communities in Australia.

That's 100 years of experience in place-making and community development to create diverse, engaging, sustainable and beautiful places that leave a positive legacy. Our living future means heeding the lessons we've learned in the past and extending our focus on quality, value and customer-centric sustainability in the future.

We prioritise connection and encourage a sense of belonging at the neighbourhood level in the communities we create. This is what our partnership with Ending Loneliness Together, a national network which draws on the expertise of professional organisations and educational institutions, is about. It presents new opportunities for us to incubate ideas and pilot programs with the potential to reduce loneliness in the places we live and work.

We exist to create belonging in stronger, smarter, happier neighbourhoods, and fostering resilience in our communities is how we contribute to a living future.

### **Frasers Property Group Team**



We've made great strides this year in taking action to achieve positive change at NH Architecture. We're proud to have achieved carbon neutral certification through Climate Active. We've made it easier for our project teams to source sustainable building materials through the creation of our in-house 'Green List' of materials which have gained sustainable credentials such as Declare® and Global GreenTag. We're tracking the embodied carbon in several of our live projects. We've also worked collaboratively with engineers Cundall to produce an eBook discussing the lessons we gained through the process of working on our first Living Building Challenge® project.

### **NH Architecture Team**

# LIVING FUTURE® PROGRAMS

We're part of a global movement showing the world that the best is possible now. Living Future® programs are a blueprint for regenerative buildings that go beyond sustainability. A growing number of Projects that achieve Living Building Challenge®, Zero Energy Certification™ and Zero Carbon Certification™ prove that future-focused buildings aren't a dream. They're here.

THERE ARE **195 PROJECTS**  
AROUND THE WORLD WITH A  
LIVING FUTURE® CERTIFICATION  
AND **735 PROJECTS** REGISTERED  
GLOBALLY.



3

NEW AUSTRALIAN PROJECTS  
REGISTERED IN 2023

24

TOTAL AUSTRALIAN PROJECTS  
REGISTERED



# NEW AUSTRALIAN PROJECTS IN PROGRESS



## ARUP OFFICE, ADELAIDE

Location: Kaurua Country,  
Victoria Square, SA

Owner: Arup

Typology: Interior

Site Area: 800m<sup>2</sup>

LBC Version: 4.0

The vision for Arup's tenancy fit-out in Adelaide within the existing heritage-listed Reserve Bank Building at 182 Victoria Square, is to develop a purpose-built, flexible, contemporary workplace that enhances staff wellbeing and productivity.

The new Adelaide office communicates Arup's brand, and is a place that collaborators and clients feel welcome and excited to visit. Arup is keen to walk the talk and considers the Living Building Challenge® international best practice as part of their globally leading sustainability strategy.

## THE BIOPHILIC BUNGALOW

Location: Boon Wurrung /  
Bunurong Country, Hampton,  
VIC

Owner: Chris and Sun Buntine

Typology: Residential  
Renovation/Extension

Size: 240m<sup>2</sup> (100m<sup>2</sup> renovation  
and 140m<sup>2</sup> extension)

Site Area: 667m<sup>2</sup>

LBC Version: 4.0

Certification Ambition: Petal



The Biophilic Bungalow will demonstrate a new approach to single-family housing in existing neighbourhoods that contributes positively to the health and vitality of living systems.

The project will demonstrate a new approach to single-family housing in existing neighbourhoods that contributes positively to the health and vitality of living systems.

The project will celebrate connection to history through the renovation of the existing 100-year-old California Bungalow and the inclusive design of the landscape that regenerates elements of the original coastal woodlands and heathlands, recognising the right of other species to thrive.

The project design process involves the local community and construction industry practitioners, to provide opportunities for collaborative learning and teaching. The project is targeting Core + Energy Petal Living Building Challenge® certification, and the extension will be designed to meet Passivhaus standards.

# AUSTRALIAN PROJECTS

## - AN UPDATE



### **GLENROY COMMUNITY HUB**

Location: Wurundjeri Country, Glenroy, VIC

Owner: Moreland City Council

Typology: Community

Site Area: 4,432m<sup>2</sup>

Certification Ambition: Petal

As the first community building in Australia built to both Passivhaus and Living Building Challenge® standards, Glenroy Community Hub is a compelling demonstration of the City of Moreland's commitment to world-leading, sustainable design. We are thrilled to share that this award-winning project has passed its Ready Audit and commenced the 12-month performance period to verify Imperative compliance - which is a great accomplishment.

### **SUSTAINABLE BUILDINGS RESEARCH CENTRE (SBRC)**

Location: Dharawal Country, Wollongong NSW

Client: University of Wollongong

Typology: Education & Research

Site Area: 2,491m<sup>2</sup>

LBC Version: 2.1

Certification:  
Full Living Certified



The SBRC is the first development in Australia, and the third outside the USA, to have achieved Full Living Certification. This year marks 10 years of operation - an incredible achievement, which continues to set the bar for the industry. As an organisation, the SBRC brings together students, researchers and industry to assist in the rapid decarbonisation of our built environment.



# TECHNICAL ADVISORY SERVICES

Our vision is to catalyse the transformation toward communities that are socially just, culturally rich and ecologically restorative. The LFIA Technical Advisory Services help to guide industry towards this vision and 'what good looks like' in regenerative design, as we continue to strive to our ambitious target of 75 registered projects in Australia by the end of 2026.

In 2023 we worked with several organisations to provide them with the knowledge, advice and confidence needed for their projects and strategic planning. The more we equip built-environment project teams to come on board the suite of Living Future® programs, through knowledge-sharing and practical know-how, the more we continue to grow our impact, skills and momentum towards a living future.

## PAST CLIENTS

The ARUP logo is displayed in a bold, red, sans-serif font.The FRASERS PROPERTY logo features a stylized red and white graphic to the left of the text "FRASERS PROPERTY" in a black, sans-serif font.

# TECHNICAL WORKING GROUP

Using their extensive expertise, our Technical Working Group (TWG) works voluntarily to contextualise Living Future® programs to Australia and develop crosswalks with local standards. We thank members for their contribution and commitment in supporting the LFIA's mission, including those we farewelled in 2023; Guy Williams (Deloitte), Lachlan Finn (Stantec), Rory Martin (Fraser's Property Australia), Deepali Ghadge (Pangolin Associates), Andrew Scerri (Mirvac) and Laura Guccione (Bluescope Steel). We also welcomed four new members, Angeliki Dimitriou (Mirvac), Erik Moore (Dexus), Jan Van Der Bergh (Mulpha) and Martin Heide (NH Architecture) to complement the skills and expertise of existing members. We asked Katie Fallowfield (Chair) and Damon Cuming (Deputy-Chair) to reflect on their year.

*The Technical Working Group has now been in operation for three years, and it's been great to see contributions from the many TWG members towards the tasks we have been working on. This year we have seen an increase in the momentum in the industry towards projects achieving regenerative design outcomes, and the group has continued to provide support in demystifying LBC and overcoming some of the contextual challenges in the Oceania region. We look forward to 2024 and continuing our support to the industry and the LFIA.*

**Katie Fallowfield**

*The Technical Working Group achieved a lot in 2023, and has welcomed a number of new faces into the group to provide fresh ideas and perspectives. Oceania Contextualisation work has continued, including finalisation of a number of inclusions into the latest Living Building Challenge® Petal Handbooks, and the new LBC to Green Star Crosswalk is (hopefully) in the home stretch. 2024 will be an exciting year as we see the team begin to tackle new pieces of work supporting the LFIA's Strategic Plan.*

**Damon Cuming**

## TECHNICAL WORKING GROUP



**CHAIR: KATIE  
FALLOWFIELD**  
KEYTON + LFIA  
BOARD MEMBER



**DEPUTY-CHAIR:  
DAMON CUMING**  
HOMES VICTORIA



**ANDREW LING**  
POSITIVE CHANGE  
BUILDINGS



**ANGELIKI DIMITRIOU**  
MIRVAC



**CLARE PARRY**  
DEVELOPMENT  
VICTORIA



**ERIK MOORE**  
DEXUS



**FIONA CAULFIELD**  
TRICIA LOVE  
CONSULTANTS



**JAN VAN DER BERGH**  
MULPHA



**JOVANA KLIKOVAC**  
LCI CONSULTANTS



**MARTIN HEIDE**  
NH ARCHITECTURE



**NICOLA SMITH**  
LFIA TECHNICAL  
OFFICER



**SAMANTHA  
MCGAVOCK**  
DONE



**SHANICA  
SAENRAK HALL**  
NBRS



**SIMONE DELANEY**  
STOCKLANDS



**SOPHIE  
HUTCHINSON**  
REWILD AGENCY





118

ACTIVE DECLARE  
LABELS IN  
**AUSTRALIA**

34

ACTIVE DECLARE  
MANUFACTURERS IN  
**AUSTRALIA**

1,256

ACTIVE DECLARE  
LABELS  
**WORLDWIDE**

It's been another incredible 12 months for Declare® in Australia. The program continues to grow exponentially, with more and more different product types and manufacturers represented. Just this year we've registered 28 new products onto the database, several of them from manufacturers new to Declare®, including our very first coating products from Nutech Graphenstone, Rubio Monocoat and Dulux Australia.

15% of global Declare® labels can be found under Australia and New Zealand on the database, and of the 118 Declare® labels held in Australia, 106 are either Red List Free or Red List Approved status! This means that these product ingredients contain no toxic substances, as verified through the global LBC Red List - incredible achievements that are meaningfully shifting the materials industry in Australia.

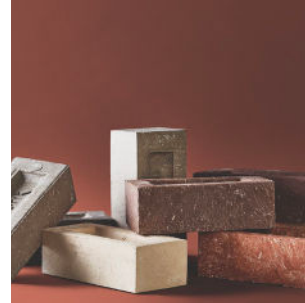
Material transparency is fundamental for everyone who cares about building with products that are safe for all species throughout time. As noted by the UN, knowing what is in the materials we specify and that they are safe, is also key for the circular economy. The publicly accessible Declare platform facilitates this through ingredient transparency and by flagging any harmful chemicals.

We're in awe of the immense amount of hard work and dedication invested by manufacturers (and their supply chains), in disclosing what their products are made from, down to 0.01% of the product by weight, and substituting to healthier alternatives as needed. Other key product health data are also displayed on Declare®, such as where the product is made, where it can go at end-of-life, responsible sourcing data and compliant emissions testing for healthy interior performance. Acoufelt and Brickworks Building Products have gone the voluntary, extra step for some of their Declare labelled products, by obtaining independent Third-Party Verification.

We're super proud of all the Australian Declare manufacturers' accomplishments and have thoroughly enjoyed providing guidance along the way. We look forward to welcoming many new manufacturers and products onto the program in 2024, and the continued support of our current Declare label holders, many of whom are also corporate members, sponsors or strategic partners. A huge thank you to everyone helping to build a living future!



5 ACOUSTIC PANELS  
1 CARPET TILE  
5 RED LIST FREE  
1 RED LIST APPROVED  
4 LABELS 3PV  
**ACOUFELT**



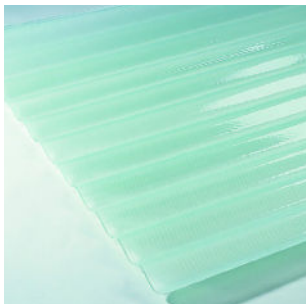
4 MASONRY  
PRODUCTS  
RED LIST FREE  
1 LABEL 3PV  
**BRICKWORKS  
BUILDING  
PRODUCTS**



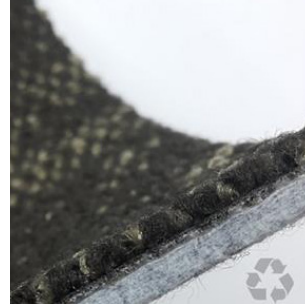
ELECTRICAL  
CONDUITS + FITTINGS  
RED LIST FREE  
**ALBATECH (EVCCO)**



ALUMINIUM DOOR +  
WINDOW SYSTEMS  
1 RED LIST FREE  
2 DECLARED  
**CAPRAL  
FABRICATOR  
NETWORK**



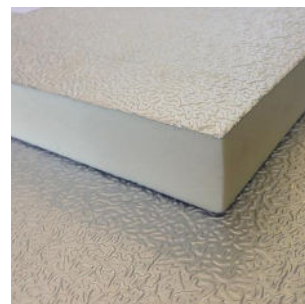
FIBREGLASS  
PRODUCT  
RED LIST APPROVED  
**AMPELITE**



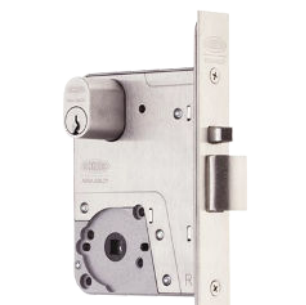
2 CARPETS  
RED LIST FREE  
**CARPETS INTER  
THAILAND**



15 RUGS  
RED LIST FREE  
**ARMADILLO**



THERMAL PANELS  
RED LIST FREE  
**CSR BRADFORD  
K8 VIC  
SOPREMA AUSTRALIA**



MORTICE LOCK  
RED LIST FREE  
**ASSA ABLOY  
AUSTRALIA**



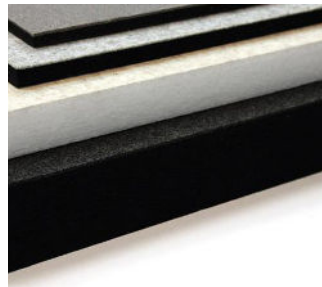
ACOUSTIC PRODUCTS  
RED LIST APPROVED  
**CSR MARTINI**



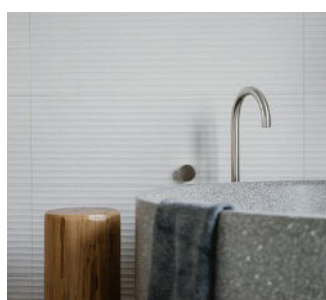
# Declare.



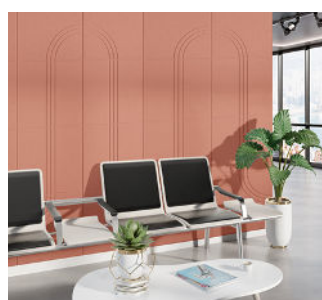
5 PAINT PRODUCTS  
RED LIST FREE  
**DULUX AUSTRALIA**



2 ACOUSTIC PANELS  
RED LIST FREE  
**INSTYLE INTERIOR FINISHES**



2 CERAMIC TILING  
RED LIST FREE  
**EARP BROS**



ACOUSTIC PANEL  
RED LIST FREE  
**KIREI**



1 ACOUSTIC INFILL  
1 ACOUSTIC CEILING  
RED LIST FREE  
**FABRITRAK**



3 ACOUSTIC  
PENDANT LIGHTS  
DECLARED  
**LUXXBOX**



3 FURNITURE  
PRODUCTS DECLARED  
**FURNITURE BY DESIGN**



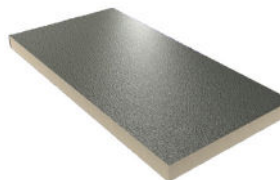
ENTRY MAT  
RED LIST FREE  
**MATTEK**



29 CARPET PRODUCTS  
RED LIST FREE  
**GHC COMMERCIAL  
GODFREY HIRST  
FELTEX**



PAINT PRODUCTS  
RED LIST FREE  
**NUTECH PAINTS**



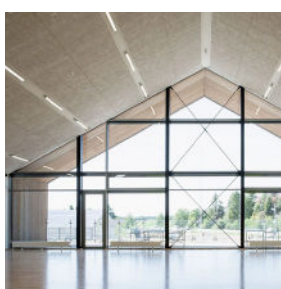
1 THERMAL PANEL  
1 DUCTBOARD  
RED LIST FREE  
**PIRMAX**



1 ALUMINIUM PRODUCTS  
1 TIMBER CEILING  
1 RED LIST FREE  
1 RED LIST APPROVED  
**SUPAWOOD  
ARCHITECTURAL  
LINING SYSTEMS**



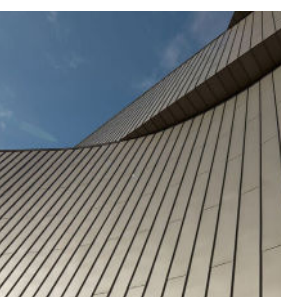
2 COATING PRODUCTS  
RED LIST FREE  
**RUBIO MONOCOAT**



TIMBER ACOUSTIC  
PANEL  
RED LIST FREE  
**TROLDTEK**



12 FURNITURE PRODUCTS  
1 QUIET ROOM  
8 RED LIST FREE  
4 RED LIST APPROVED  
1 DECLARED  
**SCHIAVELLO**



CLADDING  
RED LIST FREE  
**VMZINC - INSPIRE  
ARCHITECTURAL**



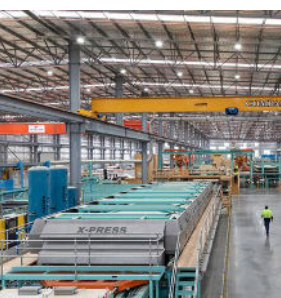
2 CARPET TILES  
2 VINYL PLANKS  
1 RED LIST FREE  
3 DECLARED  
**SIGNATURE  
FLOORING**



3 ACOUSTIC  
FINISHES RED LIST  
FREE  
**WOVEN IMAGE**



WALLING SYSTEM  
RED LIST APPROVED  
**SPEEDPANEL**



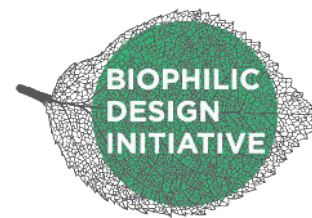
2 CLT PANELS  
RED LIST FREE  
**XLAM AUSTRALIA**





## APRIL MCCABE

CHAIR, THE BIOPHILIC DESIGN ADVISORY PANEL



The Biophilic Design Advisory Panel has been going from strength to strength since it was first established in 2019. Aligned to the goals and priorities of the LFIA Board, the Panel brings together built environment, academia, environmental science, the arts, and industry practitioners with the aim of increasing the knowledge of biophilic design and advocating for a greater connection of people and nature through how we design, planning and build cities and communities.

This year has seen many ideas become reality. The biggest one being the inaugural National Biophilic Design Awards 2023 which attracted 14 high quality entries – making the judges' task very difficult. The thoughtfully designed award (by Panel member Graham Chalcroft) was won by:

- Interior and Renovation Category - Dr Pippa Soccio for Pavone House (Wurundjeri Country, Melbourne, VIC)
- Building Scale Category - NBRs, Stantec and Taronga Conversation Society for Taronga Institute of Science and Learning (Cammeragal Country, Sydney, NSW)
- Community and Urban Scale Category - Kerstin Thompson Architects and Bundanon Trust for Bundanon Art Museum and Bridge (Dharawal Country, Illaroo, NSW)

Thanks to our Awards sponsors – THI Studio, GH Commercial and Cox Architecture – to our judges that agonised over how to separate such fantastic projects and to everyone that took the time to prepare an entry to the awards. It was heartening to see the biophilic work being done at all scales and for all types of projects. We are looking forward to 2024 to build on the success of our inaugural year.

The Advisory Panel has been working to strengthen relationships with other peak professional bodies such as the Planning Institute of Australia, Institute of Architects and Institute of Landscape Architects to continue the learning and integration of biophilic design

as an approach to how we plan, design and build our cities and places.

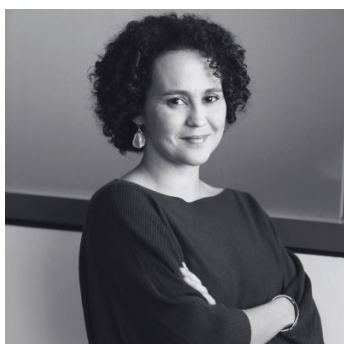
Many of our panel members have been invited to speak on various panels and at different events, all which contribute to the advocacy work of the panel along with the growth of the Biophilic Design Knowledge Hub.

This year we say goodbye to panel members Waminda Parker, Scott West, and Samantha Haynes and thank them all for their generosity, insights and time to establish the BDAP. Excitingly we have recently welcomed new members to our expanded panel for 2023/24 – Christhina Candido, Fiona Gray, Kieran Leong, Laura Turner, Pippa Soccio, Pratik Shrestha and Sam Smith – who join our continuing members – Suzie Barnett, Sacha Coles, Vanessa Trowell, Graham Chalcroft, and Stephen Choi. Also a special thank you to Suzie Barnett, whose shoes I step into as Chair of the Panel and who as the Inaugural chair has guided the establishment of the Advisory Panel and set a strong foundation to build on.

Our new panel are planning for 2024 focused on creating greater understanding about biophilic design and continuing to build a community of practice to share knowledge, inspire built environment professionals and reconnect everyone with nature as part of our daily lives to improve wellbeing.

# BIOPHILIC DESIGN INITIATIVE

## ADVISORY PANEL



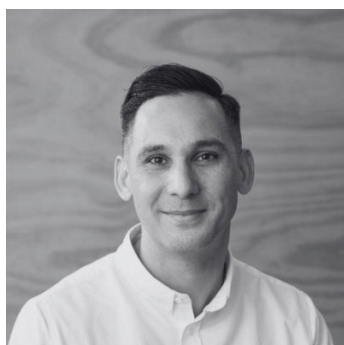
**CHRISTHINA CANDIDO**  
MELBOURNE SCHOOL  
OF DESIGN



**FIONA GRAY**  
BIOLIVING BY DESIGN



**GRAHAM CHALCROFT**  
VERTEBRAE



**KIERAN LEONG**  
DESIGNINC



**LAURA TURNER**  
COX ARCHITECTURE



**PIPPA SOCCIO**  
CSIRO



**PRATIK SHRESTHA**  
AURECON



**SACHA COLES**  
ASPECT STUDIOS



**SAM SMITH**  
DEVELOPMENT VICTORIA



**STEPHEN CHOI**  
ARCHITECTURE FOR  
CHANGE



**SUZIE BARNETT**  
TWO GOOD CO.



**VANESSA TROWELL**  
WESTON WILLIAMSON +  
PARTNERS



# AUSTRALIAN BIOPHILIC DESIGN PROJECTS

## PAVONE HOUSE

National Biophilic Design Awards 2023 – Interior & Renovation Category, Winner



Located on Wurundjeri Country, Melbourne, VIC, Pavone House was the winner of the Interior & Renovation category at the 2023 National Biophilic Design Awards.

The name Pavone (meaning ‘peacock’ in Italian) pays tribute to the heritage of the Peacock Street dwelling. It is owned and occupied by Dr Pippa Soccio and her family; five generations of the family have now resided at the address first purchased by her husband’s grandparents in the 1950s.

Pippa is an architect and lecturer in Teaching and Learning (Built Environments) at the University of Melbourne’s School of Design. The renovation provided a testing ground for her PhD studies on indoor environment quality (IEQ) in schools. Pippa sees synergies between biophilic design and IEQ that can be leveraged to promote wellbeing and energy efficiency. With fresh airflow and natural light, Pavone House has a more stable internal temperature range and decreased energy use post-renovation.

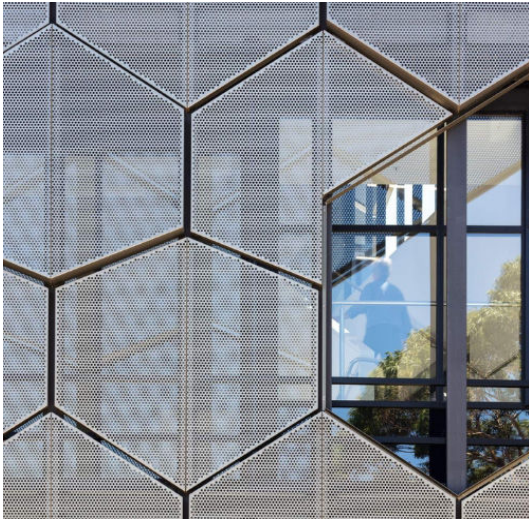
Pavone House encourages gathering, be it in the kitchen – the heart of the home – or with neighbours in the food-producing front yard. It’s also a sanctuary with considered acoustic design and private spaces for retreat. Above all else, it is a family home designed for its occupants not just to live, but to thrive.





# TARONGA INSTITUTE OF SCIENCE & LEARNING

National Biophilic Design Awards 2023 – Building Scale Category, Winner



The Taronga Conservation Society's (TCS) vision of 'securing a shared future for wildlife and people' comes to life at the Taronga Institute of Science & Learning. The Institute supports this vision by enabling Taronga to expand its capabilities in conservation science, research, and learning in a building that inspires connection.

The building incorporates purpose-built laboratories, including a multi-disciplinary research laboratory, a teaching laboratory and cryopreserve. Cutting-edge science is on display for visitors to observe and promote the cross-pollination of ideas between departments.

The Institute is also designed to support public and private education at all levels. School groups engage with science on display within the light-filled atrium and enjoy up-close immersive learning spaces. Education and experience were merged to create immersive habitat learning spaces – the first of their kind in the Southern Hemisphere – that blend living animal habitats with authentic learning.

It is designed for experiences that create a closer bond between students, scientists and 300 staff. The Institute intersects learning, science, and visitor hubs to create a design of natural connectedness; an inspirational environment that provides a remarkable opportunity to view science and discovery first-hand.





## BUNDANON ART MUSEUM & BRIDGE

National Biophilic Design Awards 2023 – Community & Urban Scale Category, Winner



Over the summer of 2019/2020 Australia's east coast was indelibly marked by bushfires of unprecedented intensity, and Autumn 2022 saw it inundated by extreme flood events. Bundanon's \$45M art collection was under threat from fires in the immediate vicinity over Christmas 2020.

Fires and floods are consistent with the site's weather patterns and with intervals between extreme events reducing, it was crucial that this environmental characteristic inform the new build.



The resulting design is as much driven by resilience and resistance as it is by ecological repair, connection to the natural climate and Indigenous land management practices. Variations in climate are central to the visitor experience, harnessed as opportunities for delight and connection with place through a responsive and sustainable infrastructure with the site's ecology at its heart. The project explicitly uses architecture to orchestrate an array of relationships between ourselves and the climate of Bundanon through spectrums of interiority, climate modification and orientation to ground. Through feeling climate our awareness of the particular and changing qualities of a specific place are heightened.

This project required and demonstrates an important conceptual shift for architecture: from isolated artifact to part of an integrated system encompassing ecology, landscape, infrastructure and architecture; from a pictorial to performative landscape in which the flow of water especially is supported by architecture for climate adaptation in combination with ongoing cultural practices and land management.



# COURSES + EVENTS

Four 'Introduction to the Living Building Challenge' webinars were held in 2023. These sessions are designed to provide attendees with an introduction to, or refresher on, the Living Building Challenge® programs and philosophy.



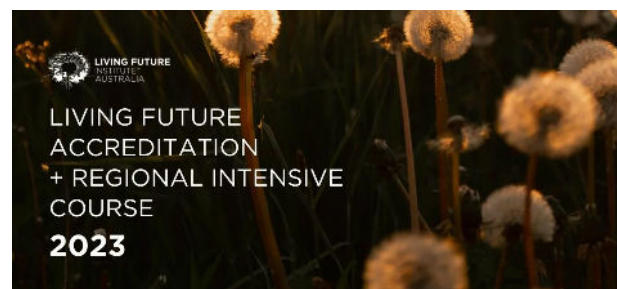
The Symposium returned in 2023 to explore the theme of 'Ambition to Action', and brought together thought leaders, regenerative design experts and built environment professionals to help build momentum that turns into real change.

The 2023 ILLUMANATE Living Building Challenge® Design Competition asked us to imagine what socially just, culturally rich, and ecologically restorative adaptive reuse looks like within the new mixed-use community known as LUMA. This ideas competition for a real building on a real site asked designers to conceive something never before seen: a repurposed heritage-listed building that can achieve the Living Building Challenge®. This year, we received 33 final submissions (almost double the previous competition)!



The Living Future Institute of Australia hosted the first National Biophilic Design Awards in 2023. The awards recognised achievements in Australian buildings, interiors and communities that demonstrate the principles and benefits of biophilic design. Winners included: Pavone House (Interior & Renovation Category), Taronga Institute of Science & Learning (Building Scale Category) and Bundanon Art Museum & Bridge (Community & Urban Scale Category).

A cohort of 26 new professionals took part in the third Living Future Accreditation + Regional Intensive Course. It is an explicit intent of the LFIA to build a community of practice, which will continue to grow year after year. We connected the 2021, 2022 and 2023 Living Future Accredited Professionals as an important step towards that goal.



During the first half of the year, bi-monthly Members Meets were held with group sessions examining the Materials Petal. Speakers included Richard Stokes, (Arup) and Hannah Morton (Cundall).





SAM SMITH, SYMPOSIUM 2023 (PHOTOGRAPHY BY EVAN MACLEAN)

# SYMPOSIUM

This year, the fifth Living Future Institute of Australia Symposium returned to Melbourne.

The Symposium's theme this year was 'Ambition to Action' and was inspired by those who reach beyond sustainability and aspire for the best possible.

At the beginning of the week, ahead of the Symposium, each attendee received a pre-recorded video via email, of a thought-provoking yarn with Apalech Clan member, arts critic and author, Tyson Yunkaporta and LFIA CEO, Laura Hamilton-O'Hara, exploring place and the power of narrative. The dialogue was recorded just after the heartbreaking outcome of the Voice referendum and paid homage to the history that shapes us, the lands that cradle us, and the narratives that connect us all.

The Symposium took place over two days. 'Day One' saw attendees choose from a selection of adventures: tours of Melbourne's Petal Certified Burwood Brickworks Shopping Centre hosted by NH Architecture and Glenroy Community Hub hosted by DesignInc, or a workshop hosted by Sculptform Design Studio and facilitated by Chris Buntine, Shanica Saenrak Hall, and Richard Stokes. The workshop provided participants with an opportunity to share their best ideas and experiences for setting up an LBC project from inception through to the activities that should happen during the first 100 days.

The evening Before-After-Party, hosted by Armadillo, warmly connected Symposium

attendees, bridging conversations and building shared excitement for the day ahead.

Day Two of the program was hosted at Abbotsford Convent and started with a "conscious meandering" led by Dan Koop and Lina Patel. This carefully crafted experience was designed as a gateway to the conference and encouraged participants to reflect on their entry to the site - setting the tone for a Symposium filled with exploration, connection, and thought-provoking moments.

The official start to the Symposium was marked by a Welcome to Country by Thane Garvey. Attendees then listened to a series of 'Ambition to Action - Stories of Inspiration' before breaking off into sessions of speaker and panel discussions, interactive workshops and clay play!

A captivating keynote by Hannah Moloney closed the event, leaving attendees excited, inspired and galvanised. The day after the Symposium, attendees received an email with a recording by the ILFI CEO, Lindsay Baker, who shared her thoughts on how "Ambition to Action" invites us into collective responsibility - serving as stewards, translators, and doers, to open people's imagination to the possibility of 'getting it right'.

Thank you to all our speakers for sharing their time and knowledge, and to our Symposium attendees for joining us for an unforgettable event!



WELCOME TO COUNTRY BY THANE GARVEY & BABY KOAH



ILLUMANATE LIVING BUILDING CHALLENGE\* WITH LAURA HAMILTON-O'HARA & CLARE PARRY



CLAY PLAY HOSTED BY LAURA TURNER & SAM SMITH



CATERING BY MABU MABU



ATTENDEES ENJOYING LUNCH



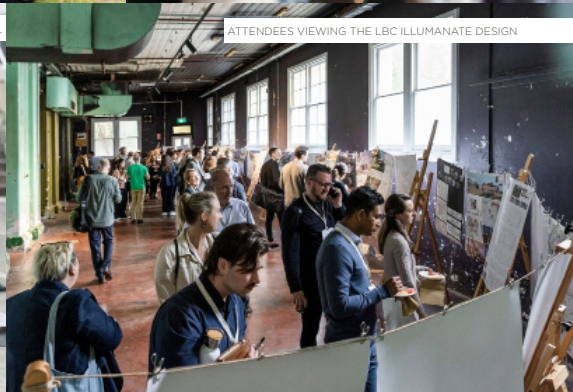
JOSH BISHOP READING EXCERPT FROM 'RIGHT STORY WRONG STORY' BY TYSON YUNKAPORTA



KATIE FALLOWFIELD AND DAMON CUMING



APRIL MCCABE & VANESSA TROWELL



ATTENDEES VIEWING THE LBC ILLUMANATE DESIGN

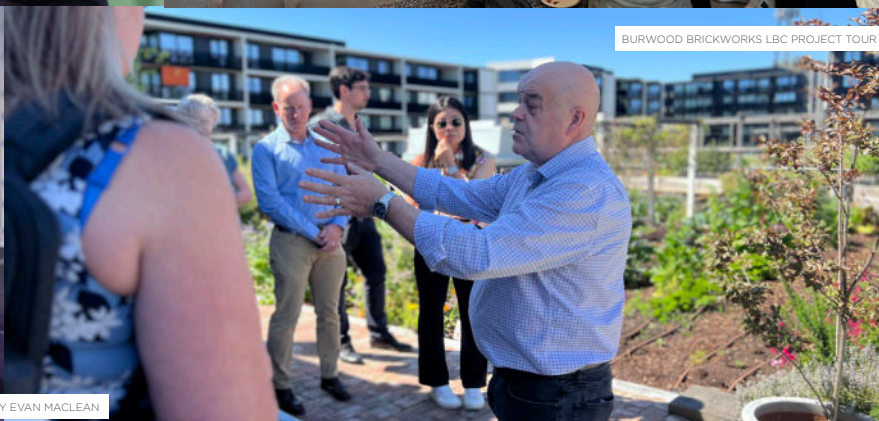


KEYNOTE SPEAKER HANNAH MONLONEY



THE BEFORE-AFTER PARTY HOSTED BY ARMADILLO

SYMPOSIUM 2023 STYLING BY SARAH LADYMAIN



BURWOOD BRICKWORKS LBC PROJECT TOUR

PHOTOGRAPHY BY EVAN MACLEAN





## THANK YOU

The Symposium would not have been possible without the support of our Symposium Partners. It also came to life thanks to the hard work and generous spirit of our panelists and speakers, LFIA's Symposium Coordinator Sarah Ladyman, our volunteers, hosts, the LFIA Board and LFIA Staff. Thank you to Armadillo, Sculptform Design Studio, and Abbotsford Convent for helping us host impactful and memorable experiences.

## SYMPOSIUM PARTNERS

PLATINUM



GOLD



WW+P



SURFACE EVOLUTION

BEFORE-AFTER-PARTY HOST

ARMADILLO



# ILLUMANATE



Living Building Challenge  
Design Competition 2023



## LBC DESIGN COMPETITION

### WHY AN LBC DESIGN COMPETITION?

A design competition is a powerful strategic tool used to spark experimentation with the Living Building Challenge® framework in a new way.

### THE CHALLENGE

The ILLUMANATE Living Building Challenge® (LBC) Design Competition allows us to imagine what socially just, culturally rich, and ecologically restorative adaptive reuse looks like within the new mixed-use community known as LUMA.

Hosted by the LFIA in partnership with Development Victoria, this ideas competition for a real building on a real site asked designers to conceive something that's never seen before: a repurposed heritage-listed building that can achieve the Living Building Challenge®.

### THE PROJECT

Project: LUMA  
Partner: Development Victoria  
Location: 247 St Albans Road, Wurundjeri Country, Sunshine North, VIC  
Typology: Existing Building  
Certification Target: Full Living Certified  
LBC Version: 4.0  
Transect: L4 General Urban Zone

Set in the suburb of Sunshine North, Victoria, the former City West Water administrative block is a heritage building ready to be transformed into a mixed-use development that complements the neighbouring residential, retail and community uses.

The building and its immediate surrounds are historically significant, as the former Melbourne & Metropolitan Board of Works (MMBW) Western Regional Complex underwent an important phase of growth in the 1970s and 1980s. It is also architecturally significant as an example of the work of architectural firm A.K. Lines, MacFarlane and Marshall with brutalist influences.

### CATEGORIES

The design competition was open to both student and professional teams, and received a record number of entries and final submissions. Winners will be announced in early December.

### COMPETITION PARTNER



**A huge thank you to our competition partner for joining us on this transformative journey and for the hard work of all the entrants!**



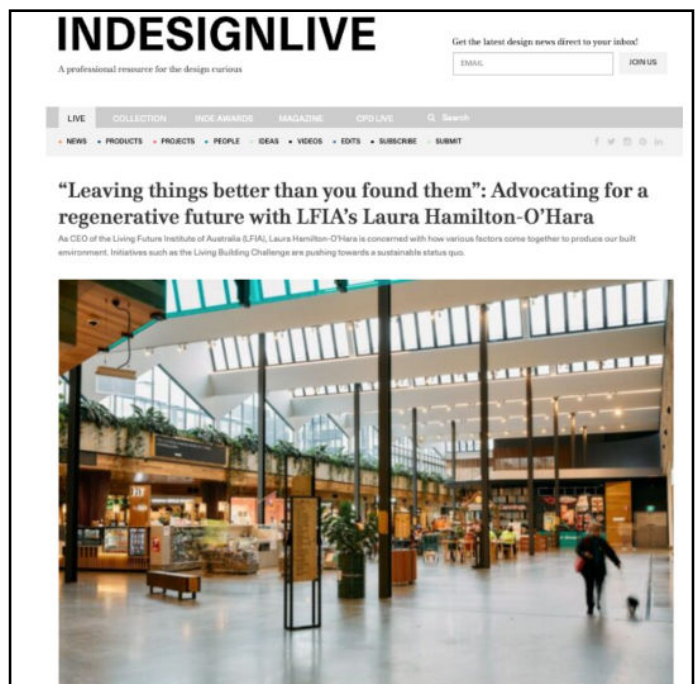
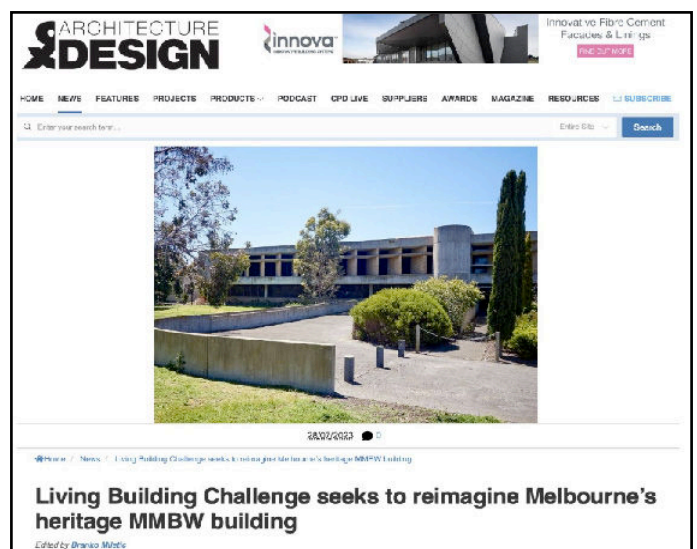
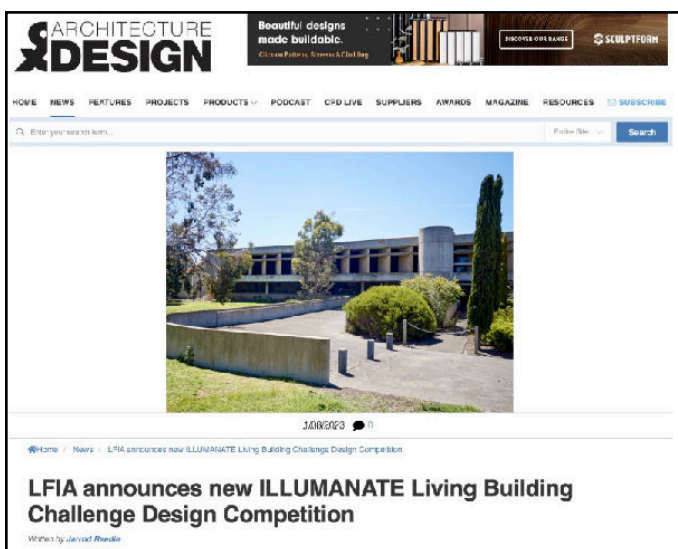
# PR AGENCY PARTNER THE BRAVERY



In 2023, LFIA collaborated with The Bravery, a leading PR agency, to implement a comprehensive communication and PR strategy aimed at fostering broad awareness for the ILLUMANATE Design Competition. The successful outcome of this partnership is evident in the substantial number of both registrations and final submissions, attributed to the effective integration of strategic paid and earned media exposure.

## MEDIA HIGHLIGHTS

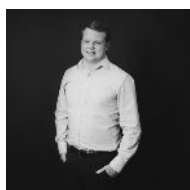
**17 pieces of media coverage** were secured, including key titles, Architecture & Design, Green Review and Indesign Live.



We're excited to see The Bravery further amplify these results in the media as the winners are announced in the coming weeks.

# LIVING FUTURE ACCREDITATION

REGIONAL INTENSIVE COURSE 2023 COHORT - CONGRATULATIONS!



**AARON PERSSON**



**ANDY LING**



**ANNE  
SCOGNAMIGLIO**



**AUDREY PENNEY**



**BOHEMIA  
HOOKHAM**



**CHRISTOPHER  
SHEEHAN**



**CLARE PARRY**



**FABIO AGOSTINI**



**JAKE RICHARDS**



**JAMES WEWER**



**JESSICA BENNETT**



**JUAN RODRIGUEZ**



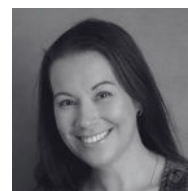
**JULIA VOGRIG**



**KEN LONG**



**LAURA COWIE**



**LEONA MCLAGGAN**



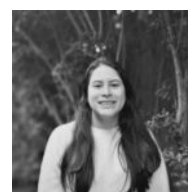
**LUKE MIDDLETON**



**NICOLAS ROBERTS**



**ORLANDO HAYES**



**PAMELA CHACON**



**PHILIPPA SOCCIO**



**ROBIN WESTON**



**SAM SMITH**



**SONYA PARTON**



**WESTON LEWIS**



**YONG HWANG**



# OUR PRESENCE

ILFI and LFIA projects and initiatives were frequently cited in mainstream and sustainability-focused media outlets in 2023.



A conference like no other, the Symposium emboldens built environment professionals and students to explore, celebrate, and advocate the growing movement, and think about how their work can promote social justice, cultural richness, and ecological restoration.

## THE FIFTH ESTATE

“At its heart, regenerative design means leaving things altogether better than you found them,” explains Hamilton-O’Hara. The LFIA acts as an advocacy and educational body; its impact can perhaps be felt most notably in schemes such as the Living Building Challenge®. As a tool that sets, in Hamilton-O’Hara’s words, the “most stringent” sustainability certification standards in the world, the challenge seeks to push the boundaries of what is possible in terms of regenerative design.

## ARCHITECTURE & DESIGN

“The most sustainable building is one that already exists,” said Vanessa Trowell, Chair of the LFIA Board. “We need to embrace the idea of retrofitting and reimagining an existing building to create regenerative spaces. We can’t always start from scratch.”

LFIA CEO Laura Hamilton-O’Hara added, “Usually the focus for the industry is on doing less bad, but actually it’s about doing better, for both society and the planet. A Living Building generates its own energy using renewables, acts as part of the hydrological cycle of the site, and takes into account embodied energy in materials and tools used.”

## ARCHITECTURE AU

Development Victoria recently announced they are partnering with Living Future Institute of Australia for this year’s Living Building Challenge® Design Competition which will see architects, designers and students propose ideas to reimagine an existing 1970s heritage building in Sunshine North and create a ‘Living Building’, capable of generating its own energy, in line with LUMA’s commitment to sustainability and innovation.

## URBAN

“The Declare program provides us a platform to screen our product ingredients, identify and eliminate, or flag chemicals known to pose serious risks to human health and the environment – known as Red listed chemicals,” says Jamuna Sivathasan, Environment & Sustainability Manager at GH Commercial.

## ARCHITECTURE & DESIGN

Dulux has recently been awarded Red List Free Declare certification across its entire enviro2™ range, marking it as the only major Australian paint brand to receive this eco certification across a full product range.

## CLIMATE CONTROL NEWS

# SOCIAL MEDIA

LFIA and ILFI are building strong interest among our online communities by providing inspiration and updates online and growing our social media audience.

LFIA made the strategic decision to close its Twitter account due to low audience engagement and a misalignment with LFIA values. Twitter's format and audience may not have been the most effective platform for conveying LFIA's message or connecting with stakeholders.

In response to the evolving landscape of social media, LFIA has launched an Instagram account. Instagram's focus on visual content and community engagement aligns more closely with LFIA's goals. This platform provides a vibrant space for connecting with stakeholders, reaching a broader audience, and sharing visually compelling content that resonates with LFIA's values and mission.

Below is the most recent reporting of LFIA and ILFI audience growth across owned platforms as of November 6th 2023.

## LFIA 2023



## ILFI 2023





# WIDENING OUR CIRCLE

LFIA has expanded its reach by speaking at external events and collaborating with organisations that share our vision.



LFIA's CEO, Laura Hamilton-O'Hara has played a pivotal role expanding our audience and exposure externally. This year she acted as a judge for a number of awards, taking the opportunity to recognise leadership in projects and people.



### **Banksia Foundation's NSW and National Awards**

Laura was recognised for her national expertise and experience across the UN SDGs and invited onto the judging panel for the 34th NSW and National Banksia Sustainability Awards. As a judge, Laura received exclusive insight into the latest developments within sustainability. Laura joined a powerful influential network of sustainability leaders who, together, form a key component of Australia's longest and most prestigious reward and recognition program.



### **Green Gowns**

Green Gown Awards recognise exceptional sustainability initiatives being undertaken by universities and colleges across the world. Laura participated as a judge for the 2023 Green Gown Awards, making a contribution to the educational sector.



### **Women's Agenda Leadership Awards**

Laura was also a judge for the 2023 Women's Agenda Leadership Awards. These awards celebrate and elevate emerging female talent. This year's program focused on integrity, highlighting the work of emerging women leaders who stay true to their values and principles in the face of key challenges and change.



# FINANCIALS

## STATEMENT OF COMPREHENSIVE INCOME FOR THE YEAR ENDED 30 JUNE 2023

	2023 \$	2022 \$
<b>REVENUE AND OTHER INCOME</b>		
MEMBERSHIPS	19,103	14,242
DECLARE LABELS	65,599	60,127
EVENTS	112,035	141,150
SPONSORSHIPS	132,500	86,000
DONATIONS RECEIVED	2,612	36
ADVISORY SERVICES	39,861	20,040
OTHER INCOME - GOVERNMENT COVID SUPPORT	-	12,054
INTEREST INCOME	-	-
GRANT FUNDING	-	7,482
<b>TOTAL REVENUE</b>	<b>371,710</b>	<b>341,131</b>
<b>EXPENDITURE</b>		
ADMINISTRATION COSTS	36,019	14,421
BAD DEBTS EXPENSE	523	-
CONSULTANT EXPENSE	24,560	22,370
DEPRECIATION EXPENSE	-	418
EVENTS EXPENSE	11,987	50,719
EMPLOYEE BENEFITS EXPENSE	267,522	242,430
TRAVEL	8,840	-
<b>TOTAL EXPENDITURE</b>	<b>349,451</b>	<b>330,358</b>
EXTRAORDINARY ITEMS	-	-
<b>SURPLUS/(DEFICIT) FOR YEAR</b>	<b>22,259</b>	<b>10,773</b>
RETAINED SURPLUS AT JULY 1	77,211	66,438
<b>SURPLUS AT THE END OF THE FINANCIAL YEAR</b>	<b>99,470</b>	<b>77,211</b>

# FINANCIALS

## STATEMENT OF FINANCIAL POSITION AS AT 30 JUNE 2023

	2023 \$	2022 \$
<b>CURRENT ASSETS</b>		
<b>CASH AND EQUIVALENTS</b>		
CASH AT BANK	136,561	130,349
<b>TRADE AND OTHER RECEIVABLES</b>		
RECEIVABLES	13,364	8,197
<b>TOTAL CURRENT ASSETS</b>	<b>149,926</b>	<b>138,546</b>
<b>NON-CURRENT ASSETS</b>		
OFFICE EQUIPMENT	3,080	3,080
LESS: ACCUMULATED DEPRECIATION	(3,080)	(3,080)
<b>TOTAL NON-CURRENT ASSETS</b>	<b>-</b>	<b>-</b>
<b>TOTAL ASSETS</b>	<b>149,926</b>	<b>138,546</b>
<b>CURRENT LIABILITIES</b>		
PAYABLES		
DECLARE LABELS - USA	22,211	13,987
EMPLOYEE BENEFITS	2 15,116	8,835
<b>TOTAL CURRENT LIABILITES</b>	<b>13,130</b>	<b>38,513</b>
<b>TOTAL LIABILITIES</b>	<b>50,455</b>	<b>61,335</b>
	<b>50,455</b>	<b>61,335</b>
<b>NET ASSETS</b>	<b>99,470</b>	<b>77,211</b>
<b>EQUITY</b>	<b>3</b>	
RETAINED SURPLUS	99,470	77,211
<b>TOTAL EQUITY</b>	<b>99,470</b>	<b>77,211</b>



# LFIA BOARD MEMBERS



**VANESSA TROWELL**  
**CHAIR**  
WESTON WILLIAMSON +  
PARTNERS



**NEIL ARCKLESS**  
**DEPUTY-CHAIR**  
CONSULTANT



**PERI MACDONALD**  
**DEPUTY-CHAIR**  
ARK ASSET  
MANAGEMENT



**LOUISE NORTON**  
**SECRETARY**  
TOUCHSTONE  
PARTNERS



**ROBERT WILCHER**  
KEYPOINT LAW



**SCOTT**  
**MATYUS-FLYNN**  
EDGE ENVIRONMENT



**DAN STURROCK**  
ARENA



**KATIE FALLOWFIELD**  
KEYTON

**A huge thank you for your  
contributions!**

# LFIA TEAM



**LAURA HAMILTON-O'HARA**  
CHIEF EXECUTIVE OFFICER

2023 Highlight: At Living Future 23 in Washington DC there was a moment when an Australian Project (Bundanon) was announced as a global finalist in the Stephen Kellert Biophilic Design Awards. It really hit me in the heart because so much work had gone into that moment by so many, including the LFIA Board and staff team and of course, the Biophilic Design Initiative. This year we achieved a significant goal launching the National Biophilic Design Awards with great success, not to mention the best trophies (made by Graham Chalcraft) I have ever seen. An added bonus in Washington was seeing the wonderful ILFI team in person after four long years. Hugs are important!



**CAIT SCULLIN**  
COMMUNICATIONS & COMMUNITY OFFICER

2023 Highlight: One of my standout moments this year was joining the LFIA team and immersing myself in a community of extraordinary individuals united by a profound vision and mission. The highlight was undoubtedly the Symposium 2023 — an unparalleled conference where the collective dedication of everyone involved transformed into a truly magical event. Witnessing the impactful and heart-felt work of passionate individuals manifest into an extraordinary experience was both inspiring and unforgettable.



**NICOLA SMITH**  
TECHNICAL OFFICER

2023 Highlight: It has been extremely satisfying helping to contextualise Living Future® programs to Australia and seeing Oceania get an ever-increasing presence in the global Living Building Challenge® Handbook, thanks to requests put forward by our LFIA Technical Working Group. It's also been special having so many occasions to be in the warm and inspiring company of the LFIA Board, colleagues, and other members of our incredible network.



# INFINITE APPRECIATION



## **ALEGRIA ALANO**

for the impactful contributions to LFIA over the past three years, from hosting the online component of the 2022 Symposium, to revamping the website and creating our Brand Book. Your creativity, kindness, and dedication shine through in every task.



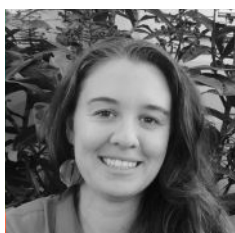
## **DAMON CUMING**

for supporting the LFIA team with technical advisory services. Thank you for adding your wisdom on LBC as applied to infrastructure. It was great to see your confidence grow as you facilitated workshops.



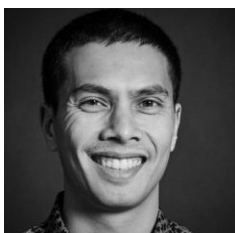
## **SAM MCGAVOCK**

for co-facilitating the Living Future Accreditation, adding such a depth of story and context for the cohort with your New Zealand LBC project experience.



## **SARAH LADYMAN**

for supporting the LFIA team with the planning, coordination and facilitation of the Symposium. Your creative flair and attention to detail (e.g. sourcing bricks from the children's farm) is magical!



## **STEPHEN CHOI**

for your incredible help and support of the LFIA team with the Technical Advisory Services, Living Future Accreditation, Technical Working Group and Biophilic Design Initiative. Your knowledge, wisdom, creativity and commitment radiate in everything you do.

# THANK YOU TO OUR COMMUNITY FOR THEIR CONTRIBUTIONS

## **LIVING FUTURE ACCREDITATION**

Ben Wilson  
Craig Kerslake  
Heidi Lee  
Dr Robyn Overall  
Sam McGavock  
Stephen Choi

## **SYMPOSIUM**

Andrew Duffin  
Anne Clisby  
April McCabe  
Archie Patel  
Bohemia Hookham  
Cameron McIntosh  
Chris Bishop  
Damon Cuming  
Dan Koop  
Dan Sturrock  
Dr Dominique Hes  
Evan Maclean  
Germain Briand  
Gus Recaman  
Hannah Blossom  
Hannah Moloney  
Jacqui Midgley  
Jenny Campbell  
Jo Russell  
Josh Bishop  
Judy Liao  
Julian Phillips  
Ken Long  
Kendall Claus  
Kieran Leong  
Kim Ingham  
Laura Turner  
Leona Mclaggan  
Lina Patel  
Martin Heide  
Mary Casey  
Meeghan Shellard  
Michael Hromek  
Dr Nana Bortsie-Aryee  
Dr Paul Smith  
Richard Stokes  
Rory Hunter  
Sam Smith

Sara Rickards  
Scott Matyus-Flynn  
Sēini Taumoepeau  
Shanica Saenrak Hall  
Siân Hromek  
Tricia Love  
Tyson Yunkaporta  
Vanessa Trowell  
Yaara Plaves

## **BIOPHILIC DESIGN AWARDS**

April McCabe  
Angela Rojas-Cracia  
Anne Clisby  
Barbara Schaffer  
Dr Fiona Gray  
Hannah Tribe  
Joe Snell  
Matthew Fellingham  
Paul Stoller  
Richard Mullane  
Sacha Coles  
Dr Sara Padgett Kjaersgaard  
Stephen Choi  
Wayne Sanderson

## **LIVING BUILDING CHALLENGE® DESIGN COMPETITION**

Bohemia Hookham  
Claire Martin  
Kai Chen  
Kelvin Walsh  
Penelope Forrest  
Roger Nelson  
Stefan Preuss  
Tim Miller  
Yuyuen Leow

## **MEMBERS MEET**

Suzie Barnett  
Richard Stokes

## **HEALTHY MATERIALS SHARE**

Julian Beattie  
Tim Williams



# OPERATIONAL PARTNERS



Craig Stump at Bluesix provides LFIA with website programming advice and services. With the technical support of Bluesix, we are able to create an online hub for our network on our website.

## murchisons.

Murchisons Chartered Accountants advise businesses and owners across an array of industry sectors, from start-ups to large enterprises, with a tailored approach to reaching financial goals. Thank you to the Murchisons team for providing LFIA with pro-bono accounting support.



THE BRAVERY

A heartfelt shoutout to our incredible PR agency, The Bravery. whose unwavering dedication and strategic brilliance played a pivotal role in the success of the 2023 ILLUMANATE Design Competition. Their carefully crafted communication and PR strategy not only generated widespread awareness but also sparked unprecedented engagement. Thanks to a harmonious blend of strategic paid and earned media exposure, LFIA witnessed a remarkable surge in both registrations and final submissions.





**LIVING FUTURE**  
INSTITUTE<sup>SM</sup>  
AUSTRALIA

For a future that is socially just,  
culturally rich and ecologically  
restorative.